

# HES® 660 Series Cabinet Lock

*The strongest surface mounted, multi-purpose locking solution*



With over 1,000 lbs of holding force.

Available with or without locked state monitoring and a pre-load release function allowing for smooth functional operation under a variety of environmental conditions. Strong, convenient and flexible, it is ideal for corporate and government applications including lockers, cabinets, and display cases.

## Features

### Standard Features

- All metal construction
- Adjustable mounting brackets with final lockdown feature
- 6 foot cable lead
- SecuriCare three-year, no fault, no questions asked warranty

### Optional Features

- **Preload** (up to 15 lbs)
- **LBSM** Locked state monitoring
- **LBSM Preload** Locked state monitoring with preload

### Accessories

- **KO** Key override



3  
Year  
SecuriCare  
Warranty



Swinging  
Door



Drawers

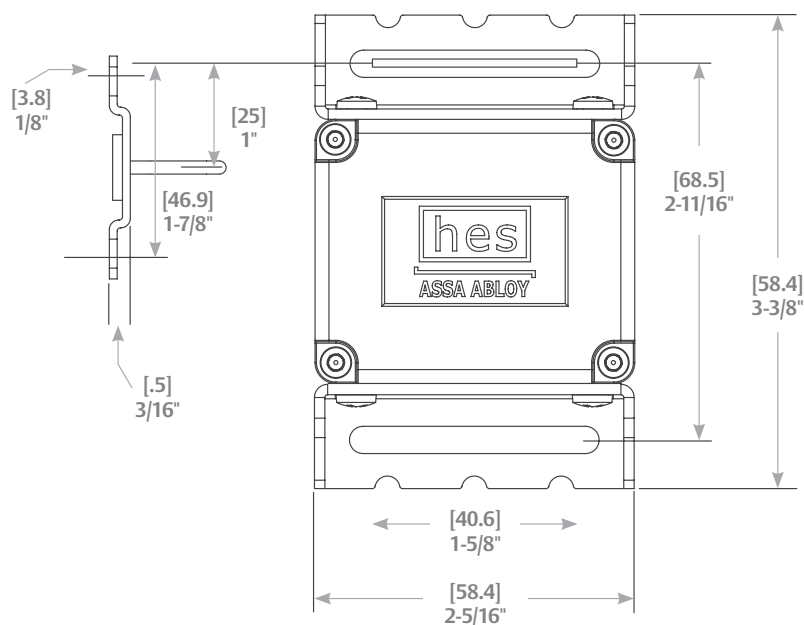
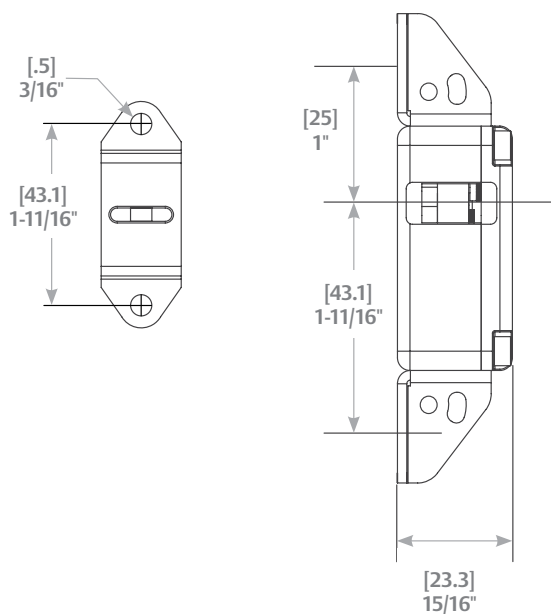


PoE  
Friendly



Preload

## Dimensions



## Specifications

### Certifications

- RoHS compliant

### Electrical

- 12 or 24 VDC  $\pm 10\%$ 
  - 240 mA at 12 VDC / 120 mA at 24 VDC (continuous duty)
  - 700 mA at 12 VDC / 350 mA at 24 VDC (preload option)
- Monitored contact rating 25V / 1A

### Holding Force

- Static strength 1,000 lbs
- Dynamic strength over 100 ft-lbs

## How to Order

Series	Voltage	Option (s)
660	– 12V	– LBSM – Preload
	12V 12 Volt	(blank) No preload, no monitoring
	24V 24 Volt	Preload Up to 15 lbs
		LBSM Locked state monitoring
		LBSM–Preload Locked state monitoring with preload