

# Pinnacle Short Backset Bi-Fold Mortice Lock

Aria or Uno Furniture

ASSA ABLOY

ASSA ABLOY, the global leader  
in door opening solutions

## Installation Instructions

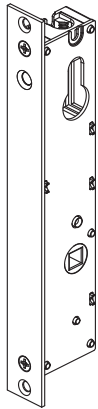
**Application:** Provides multipoint locking with secure deadlocking for aluminium folding doors.

### Tools Required:

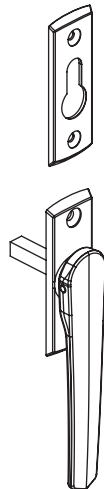
- Drill
- 3.2mm Drill Bit
- 20.0 Drill Bit

- Square Screwdriver #1

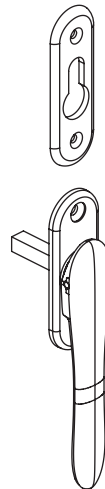
### Pack Contents:



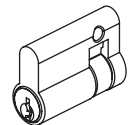
Mortice Bi-fold lock



Aria bi-fold  
handle & escutcheon



Uno bi-fold  
handle & escutcheon



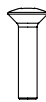
Half Cylinder



M5 Cylinder fixing screw\*



8g x 7.5 Screws



8g x 5/8 Screws



Shootbolt Rod  
1.3m



Shootbolt Rod  
1.0m



Plastic 'D' Tip



Steel Rod Tip Pin

(\*for locking version only)

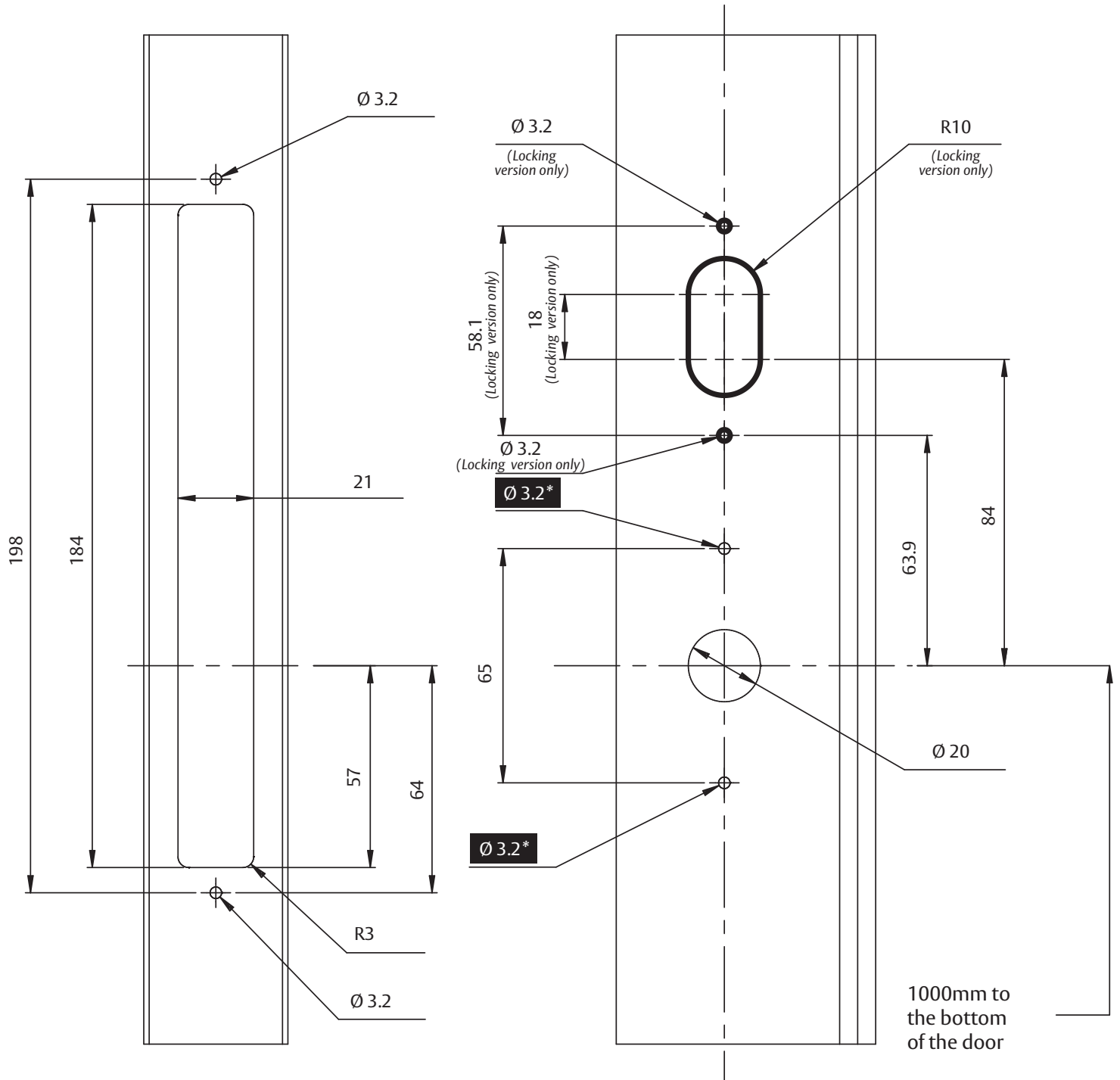
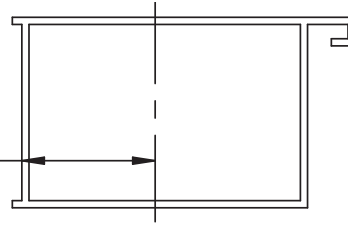
# 1. Door Preparation

Route the door as shown in the routing diagram.

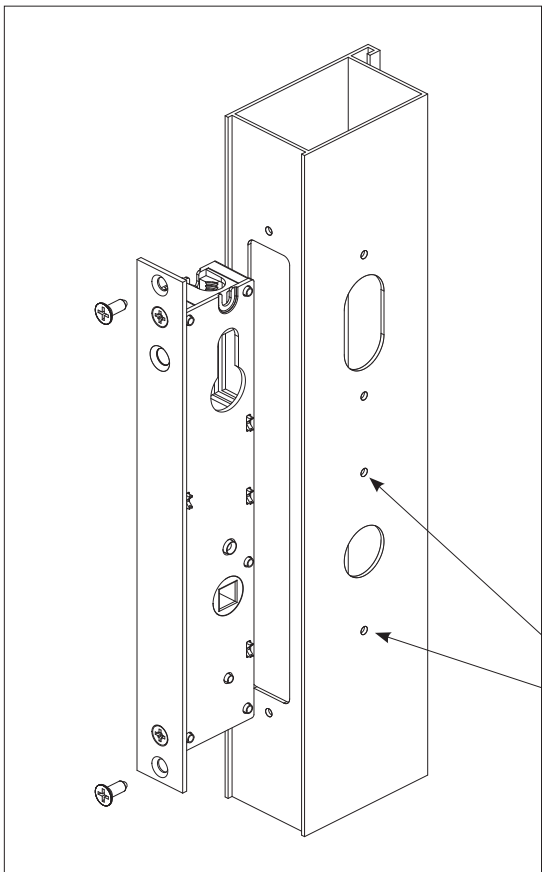
**Note:** \*Furniture is face fixed into aluminium, not into lockbody as Twinbolt Lock

- 25mm Backset Routing is 23mm from Face\*
- 30mm Backset Routing is 28mm from Face
- 35mm Backset Routing is 33mm from Face
- 40mm Backset Routing is 38mm from Face

\* In some situations with very small stiles and in a locking application, the 2mm FEP packer may be required to provide clearance to the rear of the lockbody for the cylinder. If this is the case then reduce this dimension by 2mm.

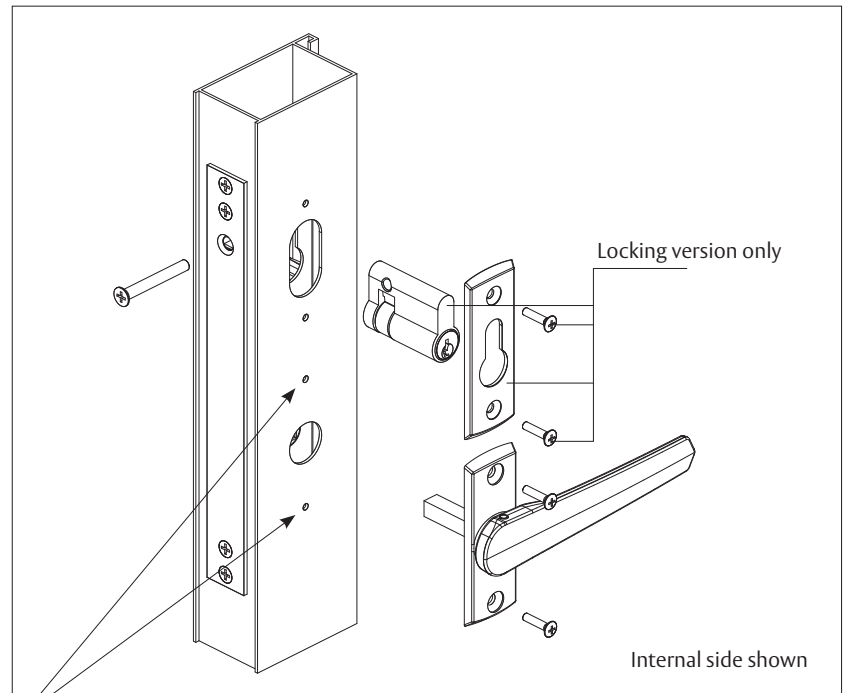


**Note:** Route inside face only



## 2. Fixing Lock

- Place the lock assembly into the stile
- Fix the lock onto the stile using the two 8g x 7.5 screws



**Note:** Furniture is face fixed into aluminium, not into lockbody as Twinbolt Lock

## 3. Fixing Furniture and Cylinder

- Insert the drive bar (spindle) on the bi-fold handle into the square drive hole in the lock
- Fix the bi-fold handle to the extrusion using two 8g x 5/8 screws
- Place the cylinder through the cylinder hole
- Fix cylinder using the M5 cylinder fixing screw as supplied
- Place cylinder escutcheon over the cylinder and fix using two 8g x 5/8 screws

## 4. Assembly of Shootbolt Rod Ends

Trim the lock rods to length allowing for:

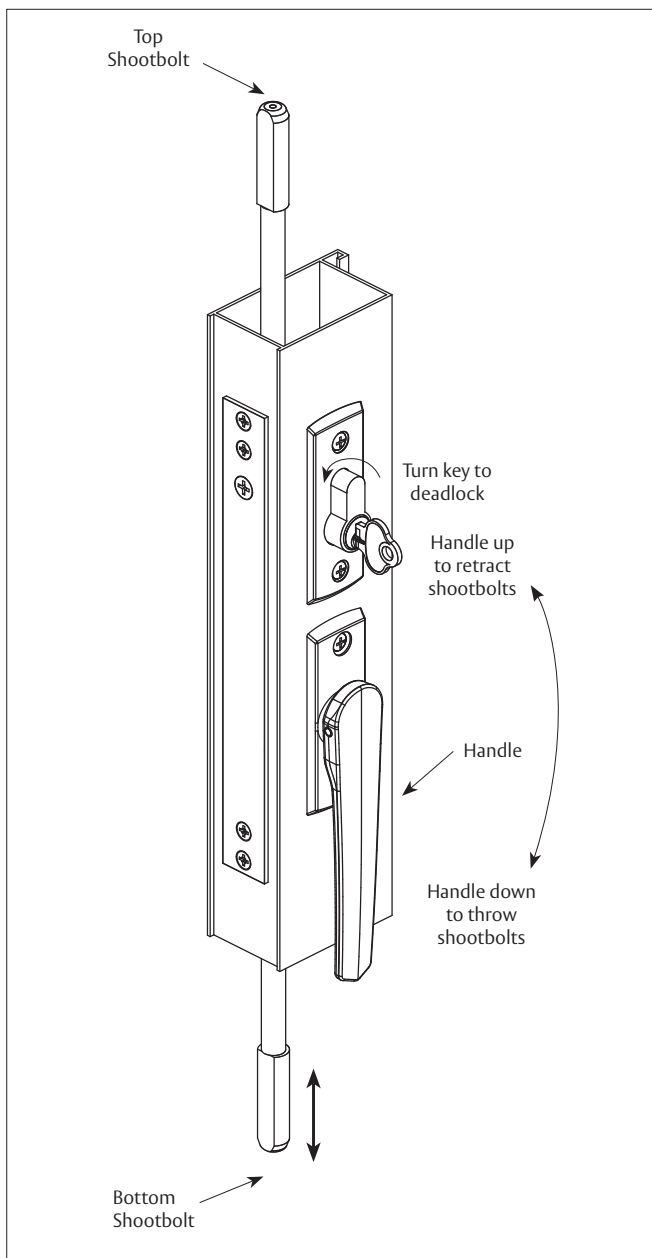
- A throw of 22mm
- Length of 'D' tip 44mm
- Engagement into lock racks of 11mm

### a) Plastic Rod Ends

- Insert the steel pin into the plastic 'D' tip. The steel pin should be inserted from the open end rather than the smaller drainage hole
- Insert the combined part into the top of the shootbolt rod
- Crimp the shootbolt rod, by applying pressure on the shootbolt rod in line with the groove around the 'D' tip to ensure the two parts cannot be easily separated. A tool is available for this purpose (P84042)
- Repeat steps 1-3 again for the bottom shootbolt rod
- Insert the rods from the top and bottom of the stile and screw into the lock

a





## 5. Lock operation

### Shootbolt Operation

- Turn handle to vertical position to throw bolts
- Turn handle to horizontal position to retract bolts
- Deadlocking function operates when bolts are thrown

Troubleshooting	
Do I need to tap holes?	No. All screws are self tapping.
Do I have to use the supplied screws?	For best performance, it is recommended that only the supplied screws are used.

## ASSA ABLOY WARRANTY

ASSA ABLOY Asia Pacific ("ASSA ABLOY") guarantees its products against defects in workmanship and materials.

All electrical and electronic components used in ASSA ABLOY's range of products excluding batteries are guaranteed for a period of 12 months from the date of proof of purchase, unless stated otherwise.

ASSA ABLOY assumes no liability under the guarantee for the following:

1. Improper installation or failure to follow fitting instructions.
2. Failure due to improper maintenance.
3. Fair wear and tear.
4. Indirect or consequential loss or damage.
5. Cost of removal and/or replacement.
6. Cost of freight and/or travelling time.
7. Damage to or deterioration of plated finishes (soft finishes). As deterioration is possible under some environmental conditions, these finishes are excluded from this guarantee.
8. Any modification or repairs to a product, as supplied, unless authorised by ASSA ABLOY.
9. Use of replacement parts other than authorised parts.
10. Malfunction or failure of the product due to the use of non-genuine ASSA ABLOY parts.

Nothing in the ASSA ABLOY Asia Pacific Warranty excludes, restricts or modifies any condition, warranty, right or liability implied or protected by law where to do so would render the Warranty, or any part of it, void.

**10**  
YEAR  
WARRANTY