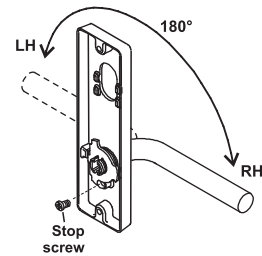
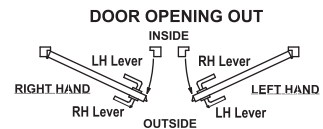
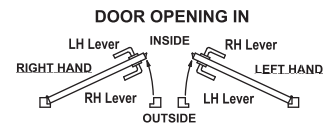
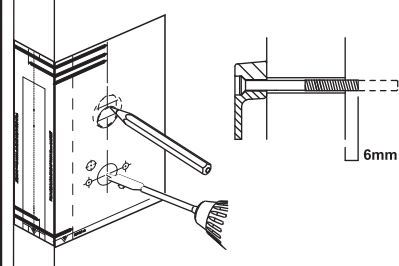


HANDING OF FURNITURE

Verify correct handing of furniture on the door required. Lever should rotate downwards.

INSTALLATION OF FURNITURE

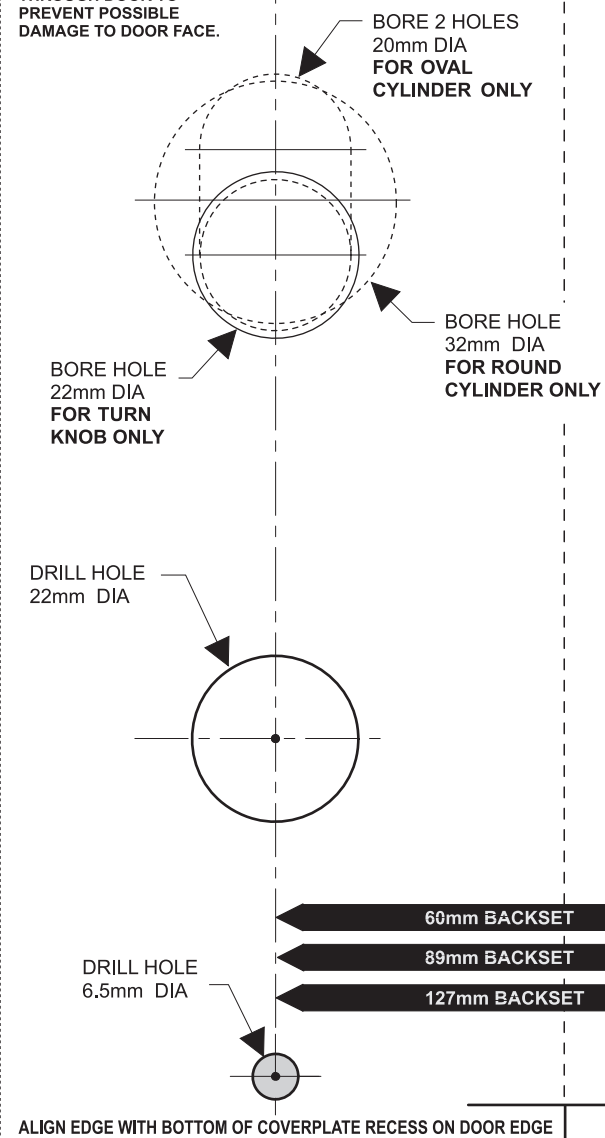
1. Remove lock from mortice.
2. Place template in correct alignment, and mark hole centres accurately and drill holes required.
3. If required cut screws to length as indicated, deburr end of cut screw. Note: Do not cut with pliers or sidecutters as this is likely to cause thread damage upon assembly.

ASSA ABLOY

The global leader in door opening solutions
P/No. Q50048

THIS IS A COMMON TEMPLATE FOR INSTALLATION OF LOCKWOOD COMMERCIAL DOOR FURNITURE WHEN USED WITH THE 3570 SERIES MORTICE LOCKS. NOTE: BEFORE DRILLING HOLES CHECK SUITABILITY WITH LOCKSET AND FURNITURE TO BE FITTED. FOR ALL OTHER DETAILS REFER TO LOCK MOUNTING INSTRUCTIONS.

ENSURE LOCK IS REMOVED FROM MORTICE BEFORE DRILLING HOLES DO NOT DRILL HOLES RIGHT THROUGH DOOR TO PREVENT POSSIBLE DAMAGE TO DOOR FACE.

**LOCKWOOD COMMERCIAL RF800 DOOR FURNITURE MOUNTING INSTRUCTIONS**