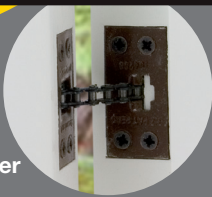


MC20



# SECURI CLOSER

HIDDEN DOOR CLOSER



## INCREASED SECURITY

Suitable for aluminium & timber



Suitable for hinged door



Easy install



Instructions included



### TOOLS REQUIRED

- 3mm drill bit
- 24mm spade bit
- Drill
- Pozi screwdriver

- Hammer
- Chisel
- Safety goggles

### CONTENTS

- 1 x Securicloser
- 1 x Chain lock pin
- 8 x Screws

### FEATURES

Provides increased security on timber and aluminium doors



PLEASE RECYCLE

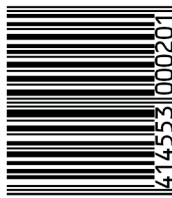


ASSA ABLOY New Zealand  
6 Armstrong Road, Albany,  
Auckland 0632, New Zealand  
Quality, ISO 9001  
Environmental, ISO 14001

For customer feedback:  
nzsales@assaabloy.com

ASSA ABLOY

An ASSA ABLOY Group brand



MC20

Q25152 1217

The world's favourite lock  
[www.yalelock.co.nz](http://www.yalelock.co.nz)





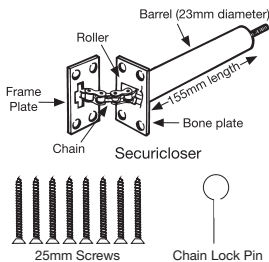
# Securicloser

The rigid door guard

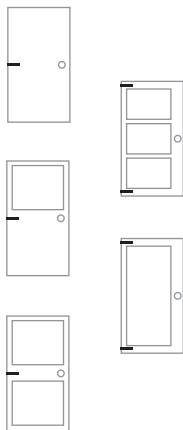
**Securicloser MC20:** For aluminium and timber hinged doors.

**Application:** Can be used on all standard doors. For doors weighing more than 50kg use two door closers. For use with fire doors (subject to local authority approval). Not suitable for use in extremely draughty conditions. Strength is adjustable without removing closer.

## Components



## Fixing Positions



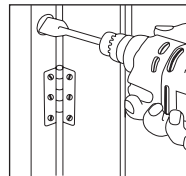
## Fixing Instructions

### 1 Positioning the closer

- Select the most suitable position for fixing the closer
- Drill a 24mm diameter hole at least 155mm deep in the hinged edge of the door

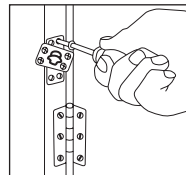
**Note:** in most interior doors a hole of 50mm in depth will pass through the frame.

- For doors below 36mm thickness fit barrel to door jamb and fit frame plate to door



### 2 Inserting the barrel

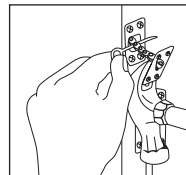
- Insert barrel into hole with roller nearest hinge side of door
- Mark out and chisel base plate flush with door edge
- Turn frame plate 45 degrees and fix two screws (use 3mm diameter bit for screw holes)
- Turn opposite direction and fix other two screws
- Return frame plate to centre and close door to mark position of frame plate on door jamb



### 3 Fitting plates

- Locate claws of hammer behind frame plate - pull frame plate out to approximately 40mm and insert chain lock pin between links, remove hammer (same method applies to disconnecting closer)
- Frame plate can now be fitted as for base plate

**Note:** Allow sufficient space behind centre of frame plate for chain location.



### 4 Correcting the tension

- Correct tension is set in factory. In some circumstances adjustment may be necessary
- Fully open door and insert chain lock pin as near to base plate as possible
- Slacken chain by partly closing door
- Remove chain from frame plate
- To increase tension turn chain clockwise. To decrease tension turn anti-clockwise
- Refit chain. Remove lock pin

