








## WINDOW HANDLE FRONT FIXING

PROFESSIONAL SERIES

### CONTENTS

- 1 x Aria Wedgeless left-handed window handle
- 2 x Screws
- 1 x Installation instructions

### TOOLS REQUIRED

-  Drill
-  3.5mm drill bit
-  #1 square screwdriver
-  Marker pen
-  Safety goggles

**Yale** The world's favourite lock  
[www.yalelock.co.nz](http://www.yalelock.co.nz)



MC531B Q25137 1117

ASSA ABLOY New Zealand  
 6 Armstrong Road, Albany,  
 Auckland 0632, New Zealand

Quality, ISO 9001  
 Environmental, ISO 14001

For customer feedback:  
[nzsales@assaabloy.com](mailto:nzsales@assaabloy.com)

An ASSA ABLOY Group brand



**ASSA ABLOY**

MC531B



## WINDOW HANDLE FRONT FIXING

LEFT HANDED

PROFESSIONAL  
SERIES

### ARIA WEDGELESS

Suitable for aluminium



Suitable  
for awning



Suitable  
for casement



Easy  
install



Instructions  
included



Made in  
New Zealand



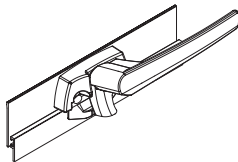
# Aria Wedgeless Window Handle

## Fixing Instructions

1

### Positioning fastener

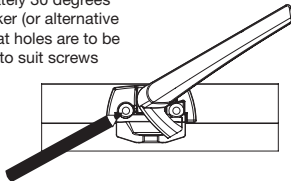
Position Aria Wedgeless fastener at desired location making sure that tongue has full engagement with the window frame, as well as having enough clearance between the fastener base and the window frame. This will prevent the base from clipping on the frame when being opened.



2

### Mark position

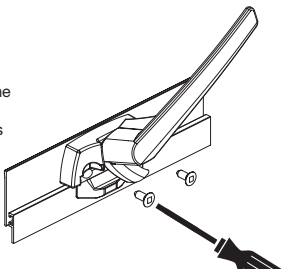
Turn handle approximately 30 degrees and using a black marker (or alternative tool) mark positions that holes are to be drilled. Now drill holes to suit screws using a 3.5mm drill bit.



3

### Attach fastener

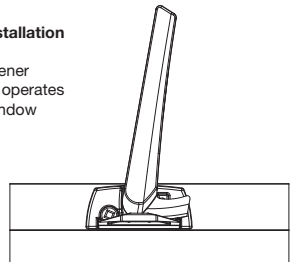
Using a square drive screwdriver attach the fastener to the sash using the two screws supplied.



4

### Completing installation

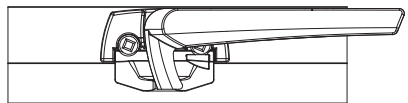
Check that fastener opens fully and operates freely on the window



5

### Checking operation

Check that the fastener closes fully and secures the window shut



**10**  
**YEAR**  
WARRANTY

The warranty covers manufacturing defects, standard finishes but excludes plated finishes or finishes exposed to a corrosive environment. The warranty excludes damage caused by installation contrary to written instructions and incidental or consequential damage. We recommend regular cleaning with mild detergent.