








WINDOW HANDLE FRONT FIXING

PROFESSIONAL SERIES

CONTENTS

- 1 x Avon non-locking left-handed window handle
- 6 x Timber screws
- 2 x Screw covers
- 1 x Casement / awning strike
- 1 x Installation instructions

TOOLS REQUIRED

-  Drill
-  3.5mm drill bit
-  #2 pozi screwdriver
-  Marker pen
-  Safety goggles

MC899W



WINDOW HANDLE FRONT FIXING

PROFESSIONAL
SERIES



AVON NON-LOCKING LEFT HANDED

Suitable for timber



Suitable
for awning



Suitable
for casement



Easy
install



Instructions
included

MC899W
Q25106 1117



9 414553 1985003

ASSA ABLOY New Zealand
6 Armstrong Road, Albany,
Auckland 0632, New Zealand

Quality, ISO 9001
Environmental, ISO 14001

For customer feedback:
nzsales@assaabloy.com



PLEASE
RECYCLE



Made in
New Zealand



The world's favourite lock
www.yalelock.co.nz

An ASSA ABLOY Group brand

ASSA ABLOY

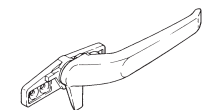


Avon Non-Locking Fastener

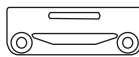
for casement and awning windows

Avon Non-Locking Fastener MC899: For timber windows.

Components



Avon Non-Locking Fastener



Casement Strike

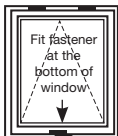


Screw Cover

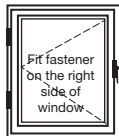


Timber Fixing Screws

Identify Window Type



Awning
Windows



Right Handed
Casement
Windows



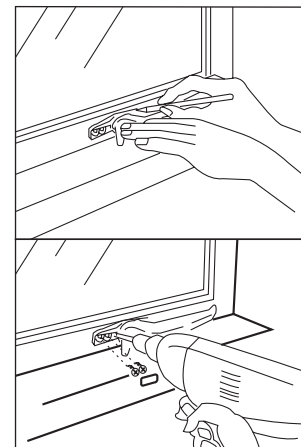
Left Handed
Casement
Windows

Fixing Instructions

1

Fitting handle

Select position for handle on window allowing 5mm clearance between the bottom of the handle base plate and the window sill. Mark screw positions, drill 3.5mm diameter pilot holes. Fix handle in position.



2

Fitting strike

Select location for strike to suit position of handle by fully closing window and sliding strike into position. Lift handle and mark screw positions for strike. Drill 3.5mm diameter pilot holes and screw strike in position. Test operation.



When window is fully closed and Avon is in locked or unlocked mode, window sash should be tightly held against frame.

