








WINDOW HANDLE FRONT FIXING

PROFESSIONAL SERIES

CONTENTS

- 1 x Avon locking left-handed window handle
- 6 x Timber screws
- 1 x Key
- 2 x Screw covers
- 1 x Casement / awning strike
- 1 x Installation instructions

TOOLS REQUIRED

-  Drill
-  3.5mm drill bit
-  #2 pozi screwdriver
-  Marker pen
-  Safety goggles

MC897W
025086 1117



9 414553 1973000

ASSA ABLOY New Zealand
6 Armstrong Road, Albany,
Auckland 0632, New Zealand

Quality, ISO 9001
Environmental, ISO 14001

For customer feedback:
nzsales@assaabloy.com



PLEASE
RECYCLE



The world's favourite lock
www.yalelock.co.nz

An ASSA ABLOY Group brand

ASSA ABLOY

MC897W (White)
MC897BR (Brown)



WINDOW HANDLE FRONT FIXING

PROFESSIONAL
SERIES

AVON LOCKING LEFT HANDED PUSH BUTTON LOCK

Suitable for timber



Suitable
for awning



Suitable
for casement



Easy
install



Instructions
included



Made in
New Zealand

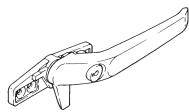


Avon Locking Fastener

for casement and awning windows

Avon Locking Fastener MC897: For timber windows.
Operation: Push button to lock, use the key to unlock.

Components



Avon Locking Fastener



Casement Strike



Screw Cover

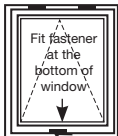


Key

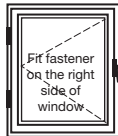


Timber Fixing Screws

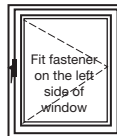
Identify Window Type



Awning
Windows



Right Handed
Casement
Windows



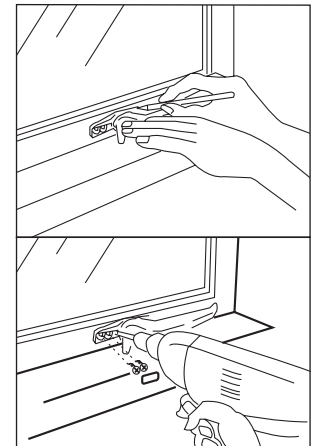
Left Handed
Casement
Windows

Fixing Instructions

1

Fitting handle

Select position for handle on window allowing 5mm clearance between the bottom of the handle tongue and the window sill. Mark screw positions, drill 3.5mm diameter pilot holes. Fix handle in position.



2

Fitting strike

Select location for strike to suit position of handle by fully closing window and sliding strike into position. Lift handle and mark screw positions for strike. Drill 3.5mm diameter pilot holes and screw strike in position. Test operation.



When window is fully closed and Avon is in locked or unlocked mode, window sash should be tightly held against frame.

