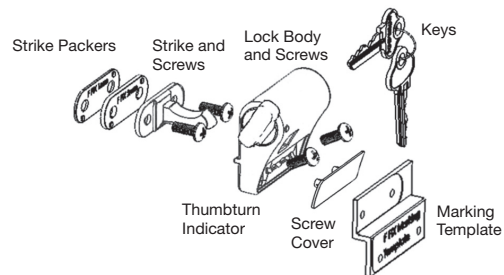
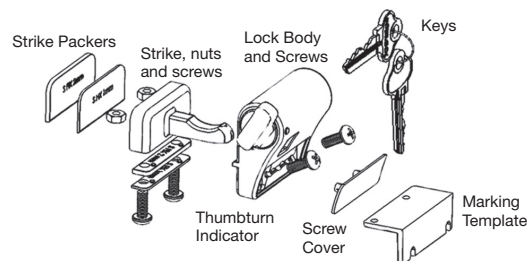


MC76 Face Fix Components



MC78 Sub Fix Components



Screw Guide



SASHLOCK FOR WINDOWS

PROFESSIONAL SERIES

CONTENTS

- 1 X Lock body
- 1 x Strike
- 2 x Strike packers
- 1 x Thumbturn indicator
- 1 x Screw cover
- 1 x Marking template
- 4 x Screws
- 2 x Nuts (sub fix)
- 2 x Keys

TOOLS REQUIRED

- 3.5mm drill bit
- 4.5mm drill bit
- Drill
- Pozi screwdriver
- Hammer
- Safety goggles



Easy Install



Instructions included

MC76C4BLK
Q25074 0717



Yale The world's favourite lock
www.yalelock.co.nz

An ASSA ABLOY Group brand

ASSA ABLOY New Zealand
6 Armstrong Road, Albany,
Auckland 0632, New Zealand

Quality, ISO 9001
Environmental, ISO 14001

For customer feedback:
nzsales@assaabloy.com



10 YEAR WARRANTY



PLEASE RECYCLE

ASSA ABLOY

MC76C4BLK MC78C4BLK



SASHLOCK

MC76 FACE FIXED
MC78 SUB FIXED

PROFESSIONAL SERIES

HIGH SECURITY

Suitable for aluminium



Suitable for awning



2 keys



Suitable for casement



10 YEAR WARRANTY



Made in New Zealand

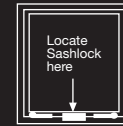


Sashlock

The security deadlock

Model MC76/MC78: For use with aluminium awning or casement windows
Finishes: Black (special colours made to order)

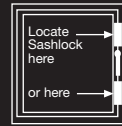
Operation: Rotate thumb turn to latch and key to deadlock
Application: Provides better security for awning and casement windows.
Note: minimum window size 400mm x 400mm



Larger top hung awning window



Smaller top hung awning window



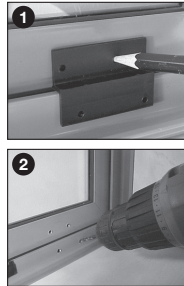
Casement side hung window

Fixing Instructions

Installing MC76 Face Fix Model

With window sash closed:

- Place marking template on window frame with text facing outward. Ensure sufficient clearance for window handle operation and key insertion
- Strike Packer(s) will be required if there is a gap between the sash and the back of the template
- Mark the four hole positions using a sharp pencil
- Centre punch all hole positions

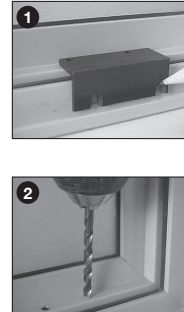


- Drill strike holes
 - Use 3.5mm drill bit
 - Take care to avoid glass
- Drill lock body screw holes
 - Use 3.5mm drill bit. Hold drill at angle of 30°
 - use a gap of 25mm between drill chuck and window sill as a guide
- Secure Strike and any Packers required to sash using 8mm screws. Do not fully tighten screws
- Secure lock body to window frame using 10mm screws. Do not fully tighten screws
- Refer to Checking Operation section

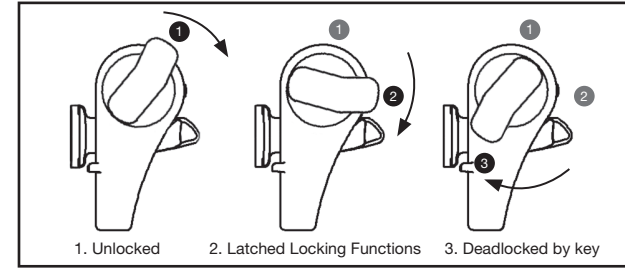
Installing MC78 Sub Fix Model

With window sash closed:

- Place marking template on window frame ensuring sufficient clearance for window handle operation and key insertion
- Strike Packer(s) will be required if there is a gap between the top face of the sash and underside of the template
- Mark the four hole positions using a sharp pencil
 - Lock body hole positions need to be marked at top of slots
- Centre punch all hole positions
- Drill Strike Holes
 - Use 4.5mm drill bit
 - Drill holes as vertical as window glass will allow
 - take care not to hit glass with drill chuck
- Drill Lock Body screw holes
 - Use 3.5mm drill bit
 - Hold drill at angle of 30°
 - use a gap of 25mm between drill chuck and window sill as a guide
- Open window sash
- Insert nuts into back of strike and fix to sash from underside using 17mm screws
- Secure Lock Body to frame using 10mm screws. Do not fully tighten screws
- Refer to Checking Operation section

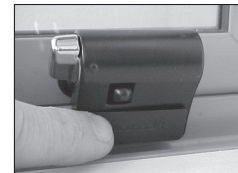


MC76/MC78 Operation Guide



Checking Operation

- Open and close the window using existing handle(s) to allow components to self align. Note: There should not be any contact between strike and lock body when window is being opened or closed
- Using operation guide, check locking function before tightening screws. Take care not to overtighten screws as this may cause stripping of the thread
- Fit screw cover to lock body



Ensure drill bits are sharp prior to use

Take care when drilling to ensure drill bit does not make contact with glass

Packers: MC78 Sub Fix model:

- If sash is higher than frame, no strike packers are required
- If sash is lower than frame, strike packers are required
- If distance from frame to sash face is more than 16mm, strike packers are required