



# Securiturn™

The Removable Turnknob

## Securiturn™ MC35L5:

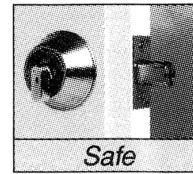
For use with most locks with double cylinders that use standard LW4 keyway

**Operation:** Securiturn can be removed by inserting the release key and withdrawing Securiturn™

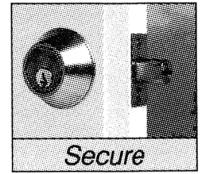
**Application:** Provides security with safety by allowing immediate exit when Securiturn™ installed in inside cylinder

**Notes:**

- Store Securiturn™ in a safe place when not in use
- Securiturn™ must be vertical before inserting release key



Insert Securiturn™ in inside cylinder



Use release key to remove Securiturn™

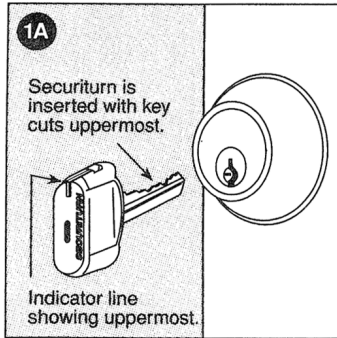
## Operating Instructions

### Safety Note

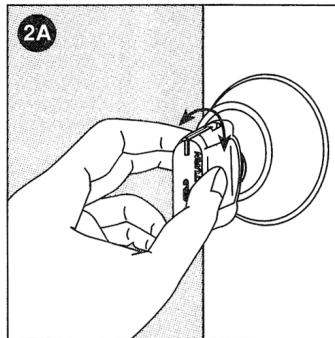
Opening of the release key has been made difficult, as a child safety feature. It opens in a similar way to a pocket knife.



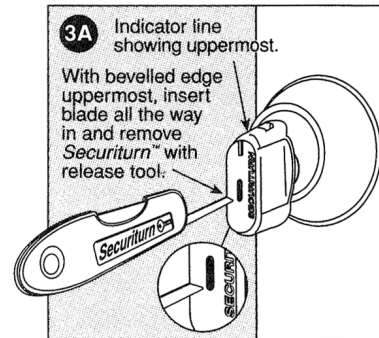
### Inserting Securiturn™



### Using Securiturn™



### Removal of Securiturn™



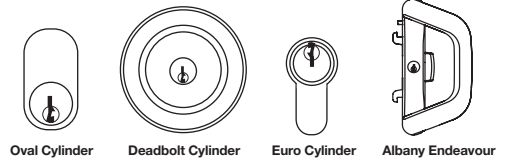
## Safe Plug

In commercial premises and in some domestic situations, a permanent Thumbturn may be required. The Red Safe Plug supplied with every Securiturn™ can be inserted (with Securiturn™ disassembled) into the release key slot (from the inside). With Safe Plug in place Securiturn™ can not be removed (except by a locksmith).



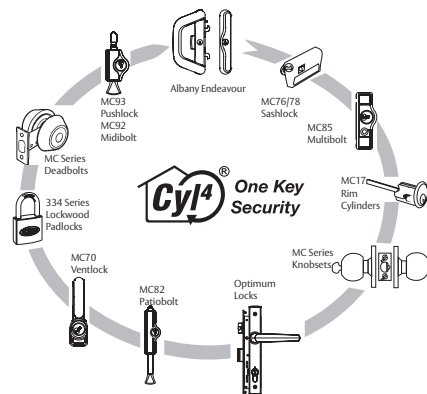
## Securiturn™ Applications

Securiturn can be used to add safety with security to many types of locks, using lock cylinders shown here, with the common LW4 Australasian keyway.



## One Key Security

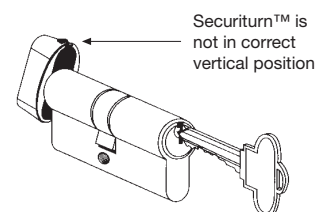
**Cyl4® One Key Security** CYL4®: With One Key Security you can use a single key to operate all the locks in your home. This lock can be supplied keyed alike in any quantity and keyed alike to a variety of ASSA ABLOY locks including most similar products of other makes. Get one key convenience simply by asking your retailer.



## Euro Cylinder Note

A feature of Securiturn™ when used in Euro cylinders is that key access from outside will be prevented by turning Securiturn™ from the correct vertical position. See diagram.

Because of the above feature do not leave Securiturn™ in the inside cylinder of the main access door as key entry could be prevented.



## Preparing Securiturn™ For Other Locks

Your local locksmith will prepare the Securiturn™ key to your current keys cuts. Securiturn™ can be used on your inside lock cylinder fitted with a standard LW4 keyway.



# MC12/MC15/MC16 Series Deadbolt

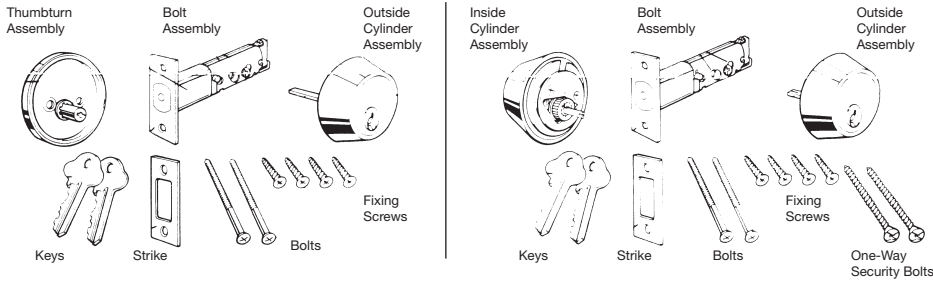
## The Deadlocking Deadbolt

### Keying Alike

This series of deadbolts can be keyed alike to each other or to some other ASSA ABLOY lock. Ask your retailer or locksmith for details.



## Components

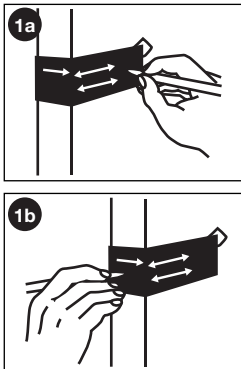


### Tools Required:

Ø3mm Drill Bit	Ø5mm Drill Bit	Ø16mm Drill Bit
Ø25mm Drill Bit	Ø54mm Drill Bit	Drill
Chisel	Phillips Screwdriver	Hammer

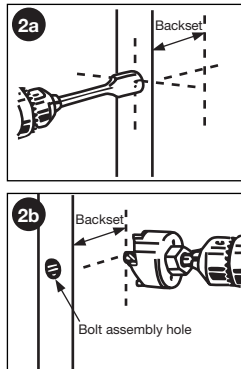
## Fixing Instructions

For standard doors 35mm to 45mm thick. For non-standard doors spacer rings are available as an optional extra.



### Setting Out

- A. Mark 54mm diameter hole**
- Mark desired lock height on edge of door (if hollow core door we recommend fitting lock in lock block area)
  - Align centreline of template on height mark and mark centre for 54mm diameter crossbore hole to suit 60mm or 70mm backset as required
- B. Mark 25mm diameter hole**
- With template in position mark centre for 25mm diameter bolt hole in the centre of the edge of door

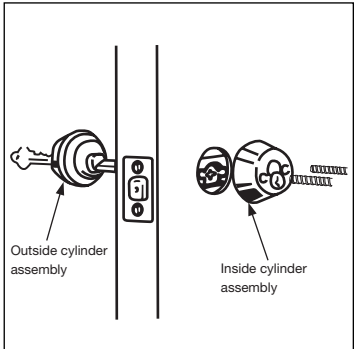
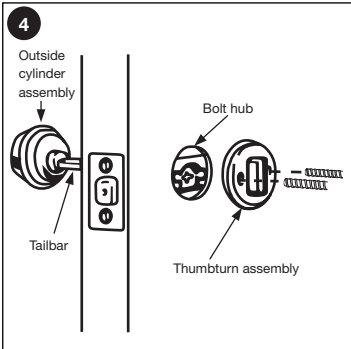
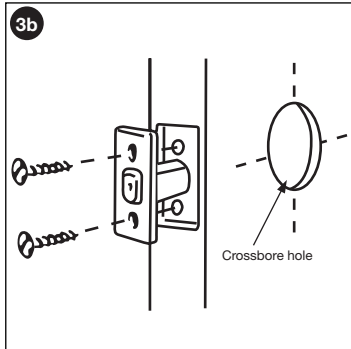
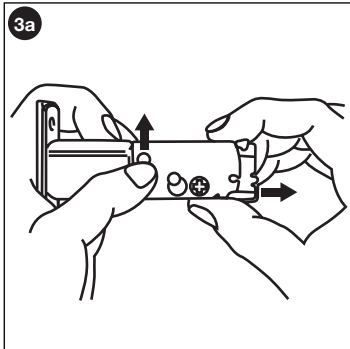


### Drilling the door

- A. Drill 25mm diameter hole**
- Drill 25mm diameter hole into edge of door to a depth of 98mm for 70mm backset or 88mm for 60mm backset
- B. Drill 54mm diameter hole**
- Drill a 54mm diameter crossbore hole from one side of door until point of bit becomes visible from the other side, then complete the hole using the penetration point as centre mark on the opposite side of the door

### Installation notes

- When fitting a replacement deadbolt, there will most likely be a 54mm diameter crossbore hole in the door already
- For doors less than 35mm thick, spacers (5mm thick) are available
- For additional security when fitting the double cylinder model we recommend after installing and testing for correct operation of the deadbolt, the removal of the standard bolts and fitting in their place the one-way security bolts supplied



### Fitting the bolt

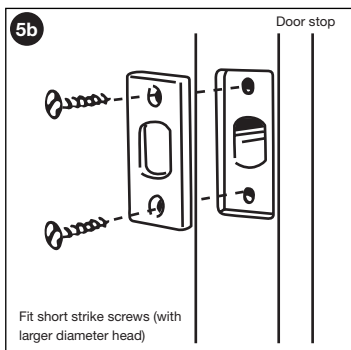
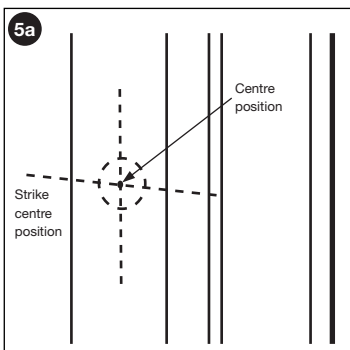
- A. Adjusting Backset if required**
- The backset of the standard bolt is adjustable from 60mm (as supplied) to 70mm
  - To adjust backset from 60mm to 70mm ensure bolt is retracted. Push change button up. Grip torque plate and torque spring then pull the extension plate all the way out

- B. Fit the bolt**
- Insert bolt assembly into edge of door and mark outline of faceplate, remove bolt and mortise to a depth of 3mm or until flush
  - Drill 3mm pilot holes and secure bolt assembly with fixing screws and extend the bolt fully in readiness for lock assembly

### Fitting of lock to door

- Single Cylinder With Thumbturn Model**
- Ensure that bolt is fully retracted and that the key is removed from cylinder
  - With tailbar of cylinder assembly in horizontal position, guide tailbar into horizontal slot of bolt hub
  - Position thumb turn assembly so that cylinder assembly tailbar engages thumbturn assembly driver and secure with the two mounting bolts (which must be tightened evenly)
  - Check for smooth operation

- Double Cylinder Model**
- Ensure that bolt is fully retracted, and that the key is removed from cylinder with tailbar of outside cylinder assembly in horizontal position
  - Guide tailbar into horizontal slot of bolt hub
  - Hold outside cylinder assembly in position and position inside cylinder assembly with tailbar in vertical slots of bolt hub
  - Secure in place with mounting bolts (which must be tightened evenly), check operation of lock with key from both sides
  - Bolt should throw and retract smoothly



### Installing the strike

- A. Drilling for the Strike**
- Mark centre position for strike on jamb exactly opposite centre of bolt hole. Drill 25mm diameter hole on centre position to a depth of 25mm.
- B. Fitting Strike**
- Place strike on centre position on jamb, mark outline of strike, mortise to a depth of 1.5mm and chisel out the bolt hole to outline of strike bolt hole. Fit the strike to the jamb and mark screw positions, drill 3mm pilot holes and screw strike in place.

### SAFETY NOTE

*We recommend for double cylinder deadbolts that MC35 Securitum be used in the inside cylinder when the house is occupied to allow easy exit in an emergency. Note: Deadbolt model MC1235 series is supplied with MC35 Securitum - See over for details.*

ASSA ABLOY New Zealand Limited  
6 Armstrong Road, Albany  
Auckland 0632, New Zealand  
www.yalelock.co.nz  
For customer feedback: info.nz@assaabloy.com