



SCREEN DOOR LOCK

PROFESSIONAL SERIES

CONTENTS

1 x Lock body	2 x 12mm body screws
1 x Outside handle assembly	2 x 25mm handle screws
1 x Inside handle assembly	2 x Strike screws
1 x Strike	1 x 30mm cylinder retaining screws
1 x Key cylinder	2 x Keys
1 x Spindle	

TOOLS REQUIRED

Drill	File
4mm drill bit	Pozi screwdriver
10mm drill bit	

ASSA ABLOY New Zealand
6 Armstrong Road, Albany,
Auckland 0632, New Zealand

Quality, ISO 9001
Environmental, ISO 14001

For customer feedback:
nzsales@assaabloy.com



An ASSA ABLOY Group brand

ASSA ABLOY



The world's favourite lock
www.yalelock.co.nz



9 414553 1060212

MC608B
Q25059 1217



MC608B



SCREEN DOOR LOCK

DEADLOCKING SCREEN
DOOR LOCK

PROFESSIONAL
SERIES

ENTRANCE

SCREEN DOOR LEVER SET

Suitable for aluminium



Suitable for
hinged door



Deadlocking



Retrofittable



2 keys



Easy
install



Instructions
included



Screen Door Lock

Deadlocking Screen Door Lock

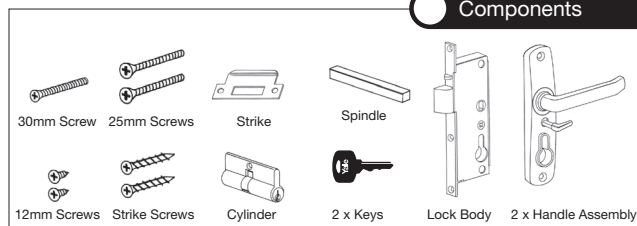


Screen Door Lock MC608B

Application: For use with aluminium security screen doors either as a new installation or as a replacement lock.

Operation: Double cylinder keyed deadlock with inside snib.

Components



IMPORTANT

- Make sure that when removing the key after locking the key is not turned past the vertical position. This could result in unlocking the cylinder.
- When unlocking the cylinder lock, make sure that the key is fully rotated to prevent accidental deadlocking of the snib.
- The snib is not a security device. It is to be used as a temporary measure only. For full security the door should be key locked.
- Safe and Secure: For safety reasons, when premises are occupied, it is recommended that the handle be snib locked or left unlocked. If this is not possible or desirable, leave the key in close proximity where all members of the household have access to it in case of a fire or an emergency.

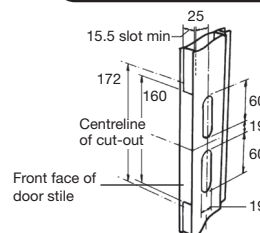
Fixing Instructions

1

Determine fixing location

When fitting lock to a **NEW** door section, first select desired height, then cut out front face and drill both sides of the door stile to dimensions shown.

Note: If replacing an **OLD** lock, the front cut out may require modification.



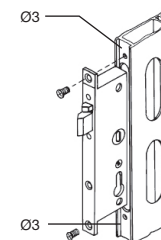
All measurements in mm

2

Fitting lock body

Slide lock body into prepared door cavity. Drill two holes and secure lock body to door section using 12mm body screws.

Note: When drilling new holes in aluminium joinery it is recommended that holes are marked with a centre punch.



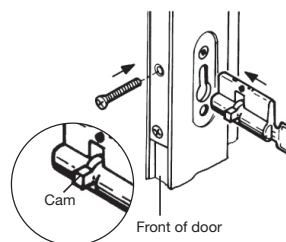
All measurements in mm

3

Fitting cylinder

Ensure main bolt is fully out and deadlocked. Insert cylinder lock so cam turns toward front of door. Secure cylinder lock body with 30mm cylinder retaining screw. Test cylinder lock operation using key.

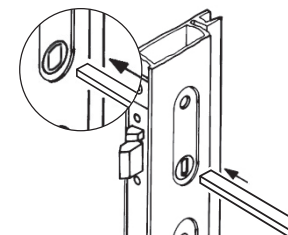
Note: Overtightening this screw may jam locking mechanism.



4

Fitting spindle

Insert spindle into lock body with curved edge facing up and away from the handle.



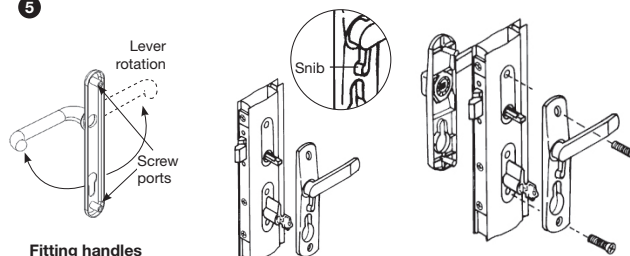
5

Fitting handles

5a. To change lever position to suit door handing rotate lever through 180°.

5b. Fit handle assemblies ensuring snib is pointing upwards on inside of door. Reverse handles if necessary.

5c. Secure handle assemblies with 25mm thread forming handle screws (these screws form their own threads).

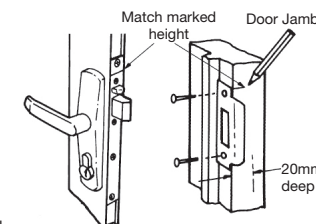


6

Fitting strike

With the door unlocked, hold in closed position and mark door jamb level with the match mark on the front lock body. Position striker plate with top in line with mark just made. Mark screw holes and bolt recess position. Ensure the bolt recess for the lock tongue is at least 20mm deep. Secure striker plate with the two strike screws supplied. Operation of lock requires auxiliary bolt to be depressed against striker plate. Ensure clearance between door and jamb is 3mm.

Note: The lock must be mounted in the position shown, as our product warranty cannot be assured if mounted upside down.



Occasional lubrication of moving parts, where possible is recommended.