

# NERO<sup>®</sup>

## COLLECTION



ASSA ABLOY



# Master the Mood with Lockwood

*The Lockwood Nero® Collection provides a sensuous quality that complements contemporary décor; adding a defining design element to any space.*





# Contents

Entrance Pull Handle	4
Velocity® Large Rose Series Element Lever	5
Velocity® Small Rose Series Element Lever	7
Velocity® Small Rose Series Escutcheons	9
Cavity Sliding Door Lock	10
FP2 Flush Pull	11
724 Series Slide Arm Door Closer	12
Nexion® Mechanical Entrance Lockset	13
Paradigm® 005 Double Cylinder Deadbolt	14
Outland Sliding Door Track	15

# Entrance Pull Handle



Make a statement with the Lockwood 143/146/147 Entrance Handles; constructed using the finest materials to incorporate the maximum standards in durability, finish and design.

Suited to both residential and commercial applications, this handle is supplied with spigots to suit 10 – 12mm thick glass doors as well as aluminium and timber doors up to 50mm thick.

## Features

- Constructed of 304 grade stainless steel
- Suitable for use in both internal and external environments



*143 Entrance Pull Handle*  
**143x300MBK**  
**143X450MBK**  
**143X600MBK**



*146 Entrance Pull Handle*  
**146X450MBK**  
**146X600MBK**



*147 Entrance Pull Handle*  
**147X450MBK**

# Velocity® Large Rose Series Lever



Be confident with a design that transcends the basic functional and aesthetic requirements of residential hardware.

Setting the benchmark in ease of installation, the Lockwood Velocity leverset is supplied pre-assembled with no loose screws or spindles. Screws align through the rose removing the need to locate them blind through the door. A twist and a quick tightening of the screws and the levers are installed.

Featuring a 63mm round rose or 66.5mm square rose, the Nero® Velocity Large Rose Series is suitable for retrofit and common residential door preparations.

## Features

- All fixings are concealed beneath a removable rose trim providing a crisp and clean presentation desired by the discerning home owner
- Simple twist and tighten fixing method with pre-assembled lever set allows for super easy and fast installation
- Available in a choice of square or round rose with the Element lever design

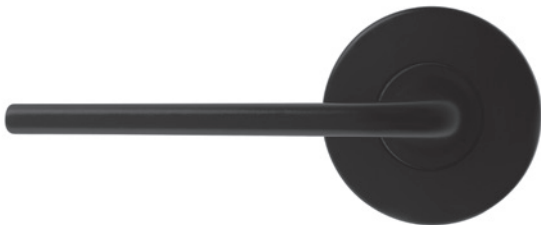
# Velocity® Large Rose Series Lever



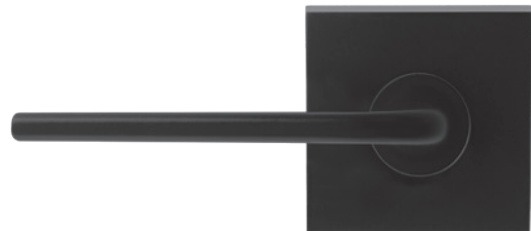
VEL1/L3MBKDP (Passage)  
VEL2/L3MBKDP (Privacy)  
VEL3/L3MBK (Dummy)



VEL1/L3MBKDP + VES1-TRIMMBK (Passage)  
VEL2/L3MBKDP + VES2-TRIMMBK (Privacy)  
VEL3/L3MBK + VES1-TRIMMBK (Dummy)



VEL1/L4MBKDP (Passage)  
VEL2/L4MBKDP (Privacy)  
VEL3/L4MBK (Dummy)



VEL1/L4MBKDP + VES1-TRIMMBK (Passage)  
VEL2/L4MBKDP + VES2-TRIMMBK (Privacy)  
VEL3/L4MBK + VES1-TRIMMBK (Dummy)



VEL1/L1MBKDP (Passage)  
VEL2/L1MBKDP (Privacy)  
VEL3/L1MBK (Dummy)



VEL1/L1MBKDP + VES1-TRIMMBK (Passage)  
VEL2/L1MBKDP + VES2-TRIMMBK (Privacy)  
VEL3/L1MBK + VES1-TRIMMBK (Dummy)



VEL1/L2MBKDP (Passage)  
VEL2/L2MBKDP (Privacy)  
VEL3/L2MBK (Dummy)



VEL1/L2MBKDP + VES1-TRIMMBK (Passage)  
VEL2/L2MBKDP + VES2-TRIMMBK (Privacy)  
VEL3/L2MBK + VES1-TRIMMBK (Dummy)

# Velocity® Small Rose Series Element Lever



Capture the aesthetic tone of on trend design whilst maintaining utilitarian desire with the Nero® Velocity Small Rose Series.

Designed for semi-commercial and residential applications, this range can be used with commercial mortice locks in addition to having passage, privacy and dummy leversets.

Featuring a 55mm round rose or 58mm square rose, the Nero® Velocity Small Rose Series is suitable for retrofit and common residential door preparations.

- Simple twist and tighten fixing method with pre-assembled lever set allows for super easy and fast installation
- Choose from two lever designs, the ever popular Element L3 lever and the AS1428.1 compliant levers
- Available in a choice of square or round rose
- Successfully tested up to 2 hours on fire door assemblies with the Australian Standard AS1905.1 2005 - Part 1: Fire Resistant Doorsets when used with Lockwood Synergy or Selector mortice locks
- Includes range of escutcheons such as a AS1428.1 compliant turnknob, standard turnknob and privacy indicating emergency turn.

## Features

- All fixings are concealed beneath a removable rose trim providing a crisp and clean presentation desired by the discerning home owner

# Velocity® Small Rose Series Lever



Round Rose Mortice Set  
**VSR0/L3MBK**



Round Rose Passage Set  
**VSR1/L3MBK**



Round Rose Privacy Set  
**VSR2/L3MBK**



Round Rose Dummy Handle (half set)  
**VSR3/L3MBK**



Square Rose Passage Set  
**VSR1/L3MBK + VSS1-TRIMMBK**



Square Rose Privacy Set  
**VSR2/L3MBK + VSS2-TRIMMBK**



Round Rose Passage Set  
**VSR0/L8MBK, VSR1/L8MBK**



Round Rose Privacy Set  
**VSR2/L8MBK**



# Velocity® Small Rose Series Escutcheons



Euro Profile Cylinder Escutcheon  
**VSR5/MBK**



Oval Cylinder Escutcheon  
**VSR6/MBK**



Standard Turnknob  
**VSR7/MBK**



Privacy Indicating Emergency Turn  
**VSR8/MBK**



Disabled Accessible Turnknob  
**VSR9/MBK**



Square Rose Escutcheon Trim  
**VSS6-TRIMMBK**

# Cavity Sliding Door Lock



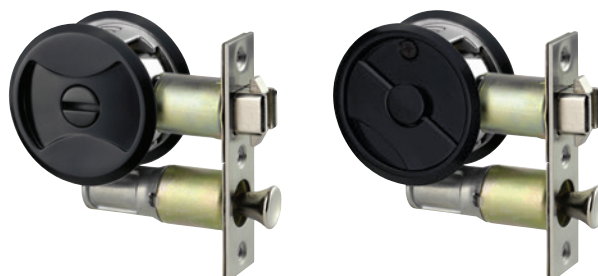
Combining elegance and ease of use, the Lockwood Cavity Sliding Door Lock provides a subtle sophistication and innovative solution for all your cavity sliding door needs.

## Features

- Fitted flush against the panel of the sliding door for full recess into the door cavity
- Only available in the privacy latch model as shown
- Retractable Door Pull for ease of use
- Compliments Velocity option 63mm rose

*Exterior View*

*Interior View*



7400MBKDP (Privacy)  
7450MBKDP (Passage)  
7444MBKDP (Entrance)

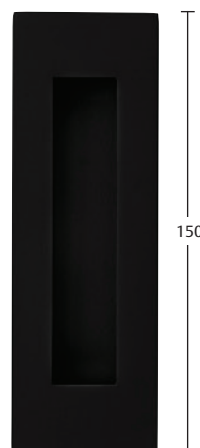
# FP2 Flush Pull



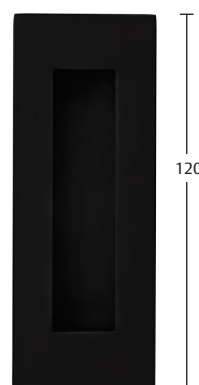
Providing minimalist perfection, the Lockwood Nero® Flush Pull is suited for numerous applications which require the door furniture to be flush with the surface of the door.

## Features

- Fitted flush against the panel of the sliding door for full recess into the door cavity



*Flush Pull*  
**FP2-150MBK**



*Flush Pull*  
**FP2-120MBK**

# 724 Series Slide Arm Door Closer



The Lockwood 724 Rack and Pinion Slide Arm Series provides a clean appearance on the door whilst utilising the same robust features and benefits of Rack and Pinion functionality. This door closer can be matched with the Nero® range of leversets to be used in commercial applications.

## Features

- Power adjustable EN 2 to 4
- Adjustable Back check (BC)
- Non-handed
- Suitable for regular and over-door mounting
- Successfully tested up to 4 hours on fire door assemblies in accordance with Australian Standard AS1905.1-2005, Part 1: Fire Resistant Doorsets



*Door Closer*  
**724SRBLK**



# Nexion® Mechanical Entrance Lockset



The Lockwood Nexion Mechanical Entrance Lockset represents the next generation in home security.

Designed and manufactured to the highest quality standard, the Lockwood Nexion range has set the benchmark for safety, security and style. The Nexion range of deadlatches offers the ultimate protection for your home and family.

## Features

- SafetyRelease™ automatically unlocks the inside handle upon entry to minimise the risk of being locked in
- LockAlert® indicator shows lock status at a glance
- Three modes of security: Secure, Safety and Passage mode provides excellent security without compromising convenience
- Designed to be keyed to builder's key systems as well as keyed alike to other Lockwood door locks
- Conforms to Australian Standard AS4145.2-2008 SL7D8C5K6



# Paradigm® 005 Double Cylinder Deadbolt



The Paradigm 005 Double Cylinder Deadbolt is the premium security solution with its innovative safety features. Its contemporary styling can be combined with the entrance handle and leversets in the Nero® range to create an elegant look to any front door.

## Features

- Three function modes with DualSelect® provides perfect combination of convenience and security
- High security cut resistant stainless steel bolt
- Safety Release™ automatically unlocks internal knob upon key entry from outside
- LockAlert® indicator shows lock status at a glance
- Available in round and square rose
- Compliments Velocity option 63mm rose



005/B1MBKDP



005/B1MBKDP



005/B2MBKDP



005/B2MBKDP

# Outland Sliding Door Track



The Lockwood Outland Sliding Door Track incorporates industrial design with the highest standards of quality. The Outland offers a classic barn door look with exposed steel straps that wrap beautifully around the nylon wheels; running smoothly along a flatbar track.

## Features

- Easy to install, perfect for DIY installations
- High quality powder coat finish provides excellent durability
- Quiet operation with nylon bearing wheels
- Available in 2 & 3m options



OTL2000BLK / OTL3000BLK





For full details of Lockwood Warranties, please visit  
[www.assaabloy.co.nz/warranties](http://www.assaabloy.co.nz/warranties)

**ASSA ABLOY New Zealand Ltd**  
6 Armstrong Road  
Albany, Auckland, 0632  
New Zealand

[nzsales@assaabloy.com](mailto:nzsales@assaabloy.com)  
Telephone +64 9 448 9188  
[assaabloy.co.nz](http://assaabloy.co.nz)

**25YEAR**

**MECHANICAL  
WARRANTY**

