

Five Knuckle Standard Weight Series

Recommended for standard weight, medium frequency doors, or doors with closing devices.

- Use for common flush door/frame/wall applications
- For Beveled Edge, where doors are beveled on hinge side, specify TA4314 or TA4714

TA2314
TA2714

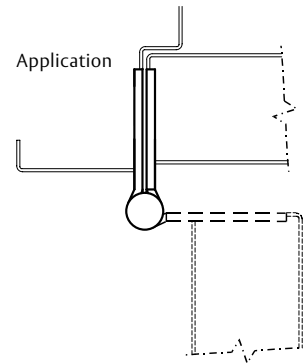


No.	ANSI Cross Reference	Base Material	Weight
TA2314	A5112	Stainless	STD
TA2314	A2112	Brass	STD
TA2714	A8112	Steel	STD

Specifications

Inches	mm	Gauge	No. of Holes	Fasteners	
				Machine	Wood
3 1/2" x 3 1/2"*	88.9 x 88.9	.123	6	1/2 x 10-24	1 x 10
4" x 4"*	101.6 x 101.6	.130	8	1/2 x 12-24	1 1/4 x 12
4 1/2" x 4"	114.3 x 101.6	.134	8	1/2 x 12-24	1 1/4 x 12
4 1/2" x 4 1/2"	114.3 x 114.3	.134	8	1/2 x 12-24	1 1/4 x 12
5" x 4 1/2"*	127 x 114.3	.146	8	1/2 x 12-24	1 1/4 x 12
5" x 5"*	127 x 127	.146	8	1/2 x 12-24	1 1/4 x 12
6" x 6"*	152.4 x 152.4	.160	10	1/2 x 1/4-20	1 1/2 x 14

* Not available in Brass base material.



Options:

Code	Description	Code	Description	Code	Description
NRP	Non-Removable Pin	BT	Ball Tip	CC	Concealed Circuit – 2, 4, 6, 8, 10 or 12 wire available
TB	Ball Bearing	ST	Steeple Tip	CC-18	Concealed Circuit – 2, 4, 6, 8 or 10 wire available (2-18AWG wires and the remainder 28AWG wires)
TCA	Concealed Bearing	SSF	Safety Stud Feature	MM	Magnetic Monitoring
RC	Round Corner – 1/4" radius furnished unless specified otherwise	QC	ElectroLynx® Hinge – 2, 4, 6, 8, 10 or 12 wire available		
HT	Hospital Tip				

McKinney Hinge Pin Door Stop

- Recommended for high-use or high impact doors with McKinney T2714 or TA2714 hinges
- Protects against damage to doors and walls
- Runs the full length of the hinge

Part number	Description	Finish
76305	Hinge Pin Stop for MacPro MP79 & MPB79	26D
76306	Hinge Pin Stop for McKinney T2714 & TA2714	26D



ASSA ABLOY

The global leader in door opening solutions

McKinney Available Finishes

From bright brass to stainless steel and any coat in-between, these finishes will give your McKinney products a unique look that matches the style of your specific space.

McKinney, B.H.M.A. and U.S. Finishes

B.H.M.A.	U.S.	McKinney	Description	Swatch
600 (Steel Base)	U.S.P.	P	Prime Powder Coat for Painting	
605 (Brass Base) 632 (Steel Base)	U.S. 3	3	Bright Brass	
606 (Brass Base) 633 (Steel Base)	U.S. 4	4	Satin Brass	
609 (Brass Base) 638 (Steel Base)	U.S. 5	5	Satin Brass, Oxidized	
610 (Brass Base) 636 (Steel Base)	U.S. 7	7	Brass, Nickel Oxidized, Bright Relieved	
611 (Bronze Base) 637 (Steel Base)	U.S. 9	9	Bright Bronze	
612 (Bronze Base) 639 (Steel Base)	U.S. 10	10	Satin Bronze	
614 (Bronze Base) 641 (Steel Base)	U.S. 10A	10A	Antique Bronze, Oiled and Lacquered	
613 (Bronze Base) 640 (Steel Base)	U.S. 10B	10B	Antique Bronze, Oiled	
616 (Bronze Base) 643 (Steel Base)	U.S. 11	11	Satin Bronze, Oxidized	
618 (Bronze Base) 645 (Steel Base)	U.S. 14	14	Bright Nickel Plated	
619 (Bronze Base) 646 (Steel Base)	U.S. 15	15	Satin Nickel Plated	
620 (Bronze Base) 647 (Steel Base)	U.S. 15A	15A	Nickel Oxidized Relieved	
623 (Bronze Base) 649 (Steel Base)	U.S. 20	20	Statuary Bronze, Light	
624 (Bronze Base) 650 (Steel Base)	U.S. 20A	20A	Statuary Bronze, Dark	
625 (Bronze Base) 651 (Steel Base)	US-26	26	Bright Chromium	
626 (Bronze Base) 652 (Steel Base)	US-26D	26D	Satin Chromium	
629 (Stainless Steel Base)	US-32	32	Bright Stainless Steel	
630 (Stainless Steel Base)	US-32D	32D	Satin Stainless Steel	

McKinney Powder Coat Finishes

32DBIO	MicroShield® Agion Antimicrobial	
AP	Aluminum	
3-C	Bright Brass w/ Clear Powder Coat	
4-C	Satin Brass w/ Clear Powder Coat	
D-3	Dark Bronze Powder Coat	
D-4	Black Powder Coat	
10BE	Dark Oxidized Satin Bronze	
BSP	Black Suede Powder Coat	
WSP	White Suede Powder Coat	

* Available finishes may vary based on hinge size

** Swatch colors are approximations and may vary based on computer screen