

GEN6TX® Technical Reference Manual



We take the worry out of
protecting what's valuable to you.
Lockwood: *no worries*®

LOCKWOOD

ASSA ABLOY

GEN6TX

25YEAR

MECHANICAL
WARRANTY

assaabloy.com/nz

The background is a solid red color with a network of thin, dark red lines forming various geometric shapes, including triangles and polygons, creating a complex, abstract pattern.

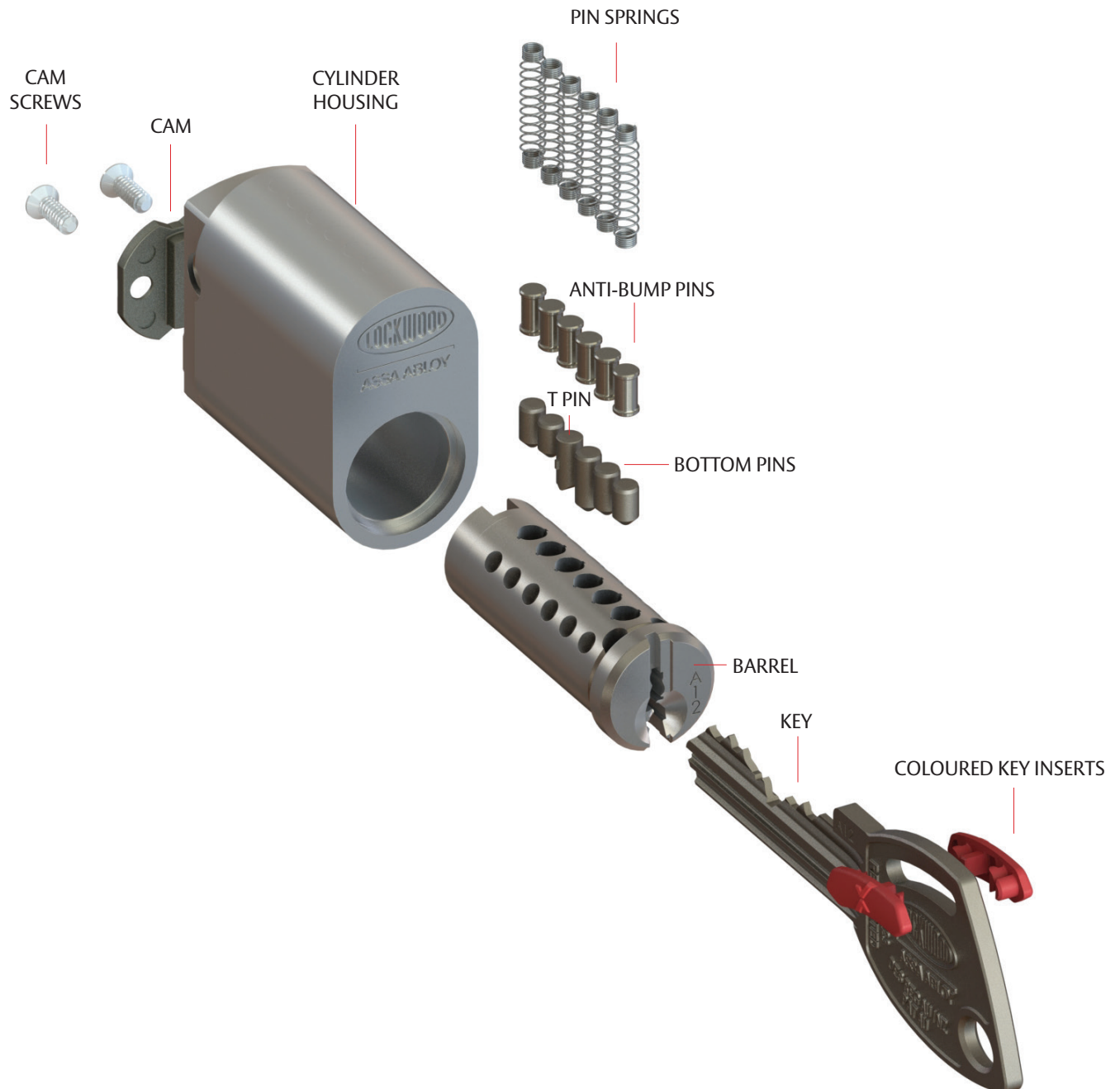
We take the worry out of
protecting what's valuable to you.
Lockwood: *no worries*[®]

Contents

Terminology	3
GEN6TX® Features	4
Pins and Springs	5-8
Key	9
Barrels	10-13
Ordering Table	14
Maintenance	15
GEN6T Coding	16-17

GEN6TX® Technical Reference Manual

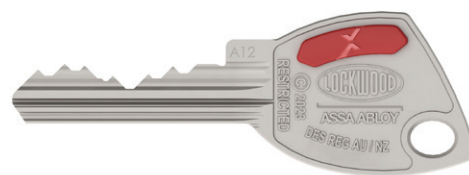
Terminology



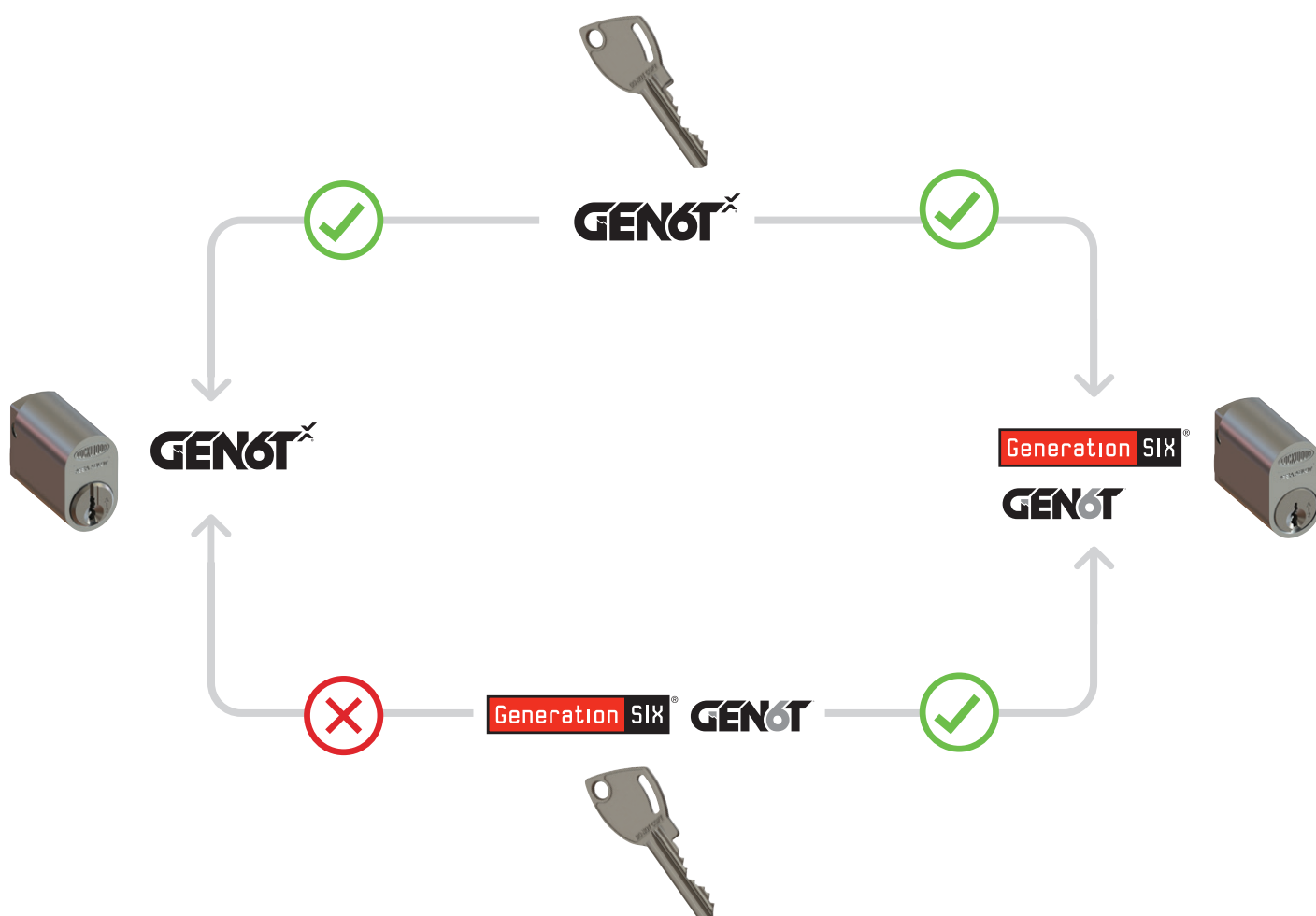
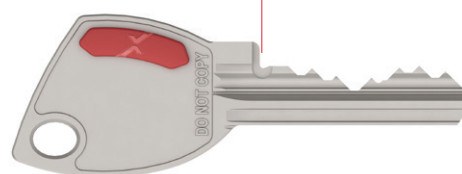
New GEN6TX® Features

GEN6TX® keys are supplied with the new FP2 feature. The FP2 feature provides increased protection via a two-way stop-surface system. One or both shoulders on the key will contact stop surfaces on the barrel, but there are three-barrel types mixed to randomize the active stop surfaces.

GEN6TX® keys are fully backwards compatible with Generation 6 and GEN6T systems. Generation 6 or GEN6T keys cannot be used with GEN6TX® barrels.



FP2 FEATURE




GEN6TX® Technical Reference Manual

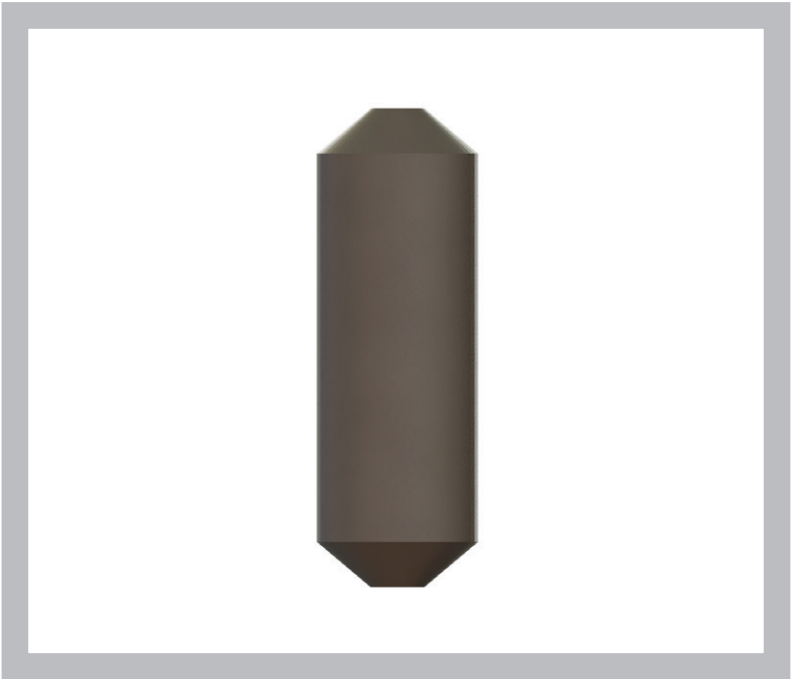
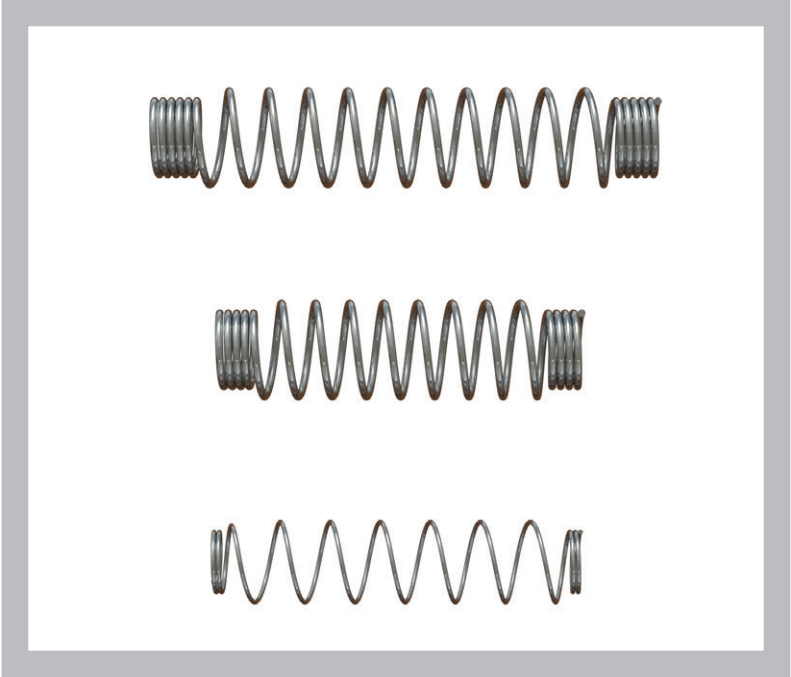
Springs & Anti-drill Bar



Springs

Part Number	Description
SP201-336SS*	Long Pin Spring
SP530-336SS*	Short Pin Spring
LCCT18067PCN	Hollow Top Pin Spring

*PTO item 



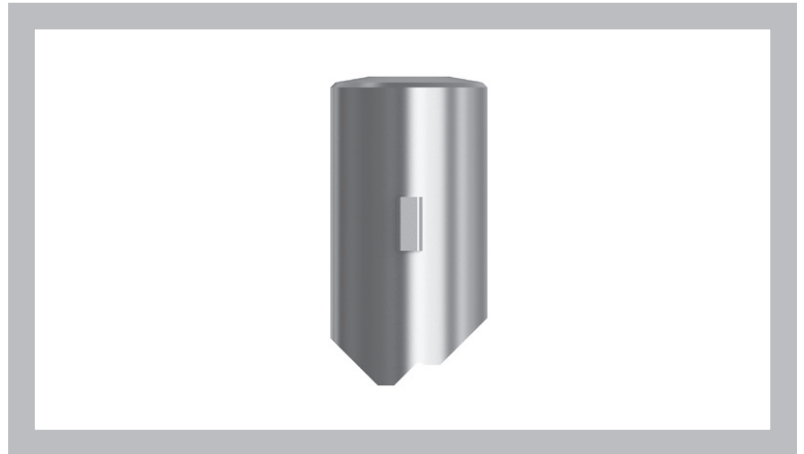
GEN6TX® Technical Reference Manual

Pins



T Pins

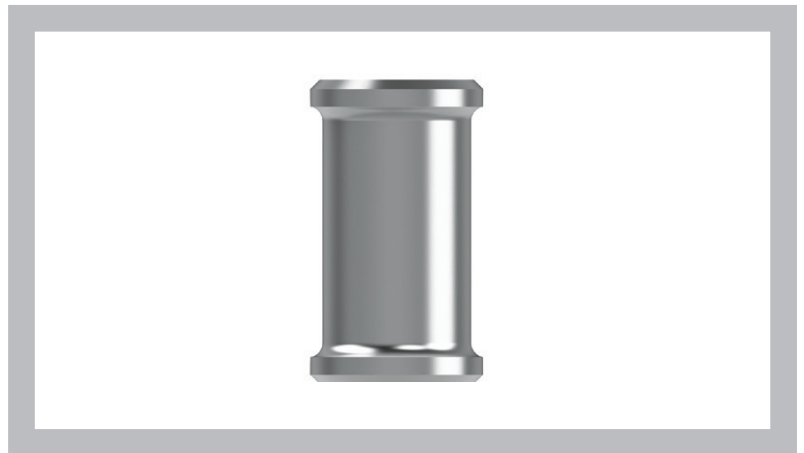
Part Number	Description
SP201-T21	T1 Pin
SP201-T22	T2 Pin
SP201-T23	T3 Pin
SP201-T24	T4 Pin
SP201-T25	T5 Pin
SP201-T26	T6 Pin
SP201-T27	T7 Pin
SP201-T28	T8 Pin
SP201-T29	T9 Pin



Anti-bump Pins

Part Number	Description
SP570-113*	Anti-bump (Standard)
SP530-332*	Anti-bump (Medium)
SP530-333*	Anti-bump (Short)

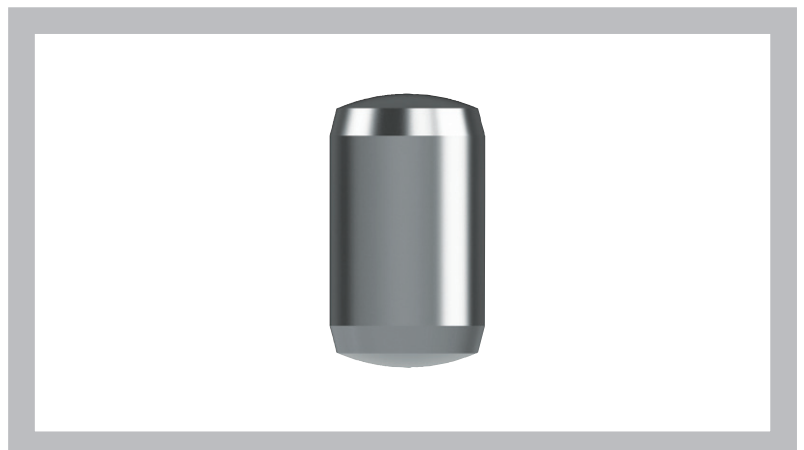
**PTO item*



Top Pins

Part Number	Description
SP201-7182**	Top Pin (Standard)
SP530-232*	Top Pin (Medium)
SP530-233*	Top Pin (Short)

**PTO item*



GEN6TX® Technical Reference Manual

Pins



Hollow Top Pins

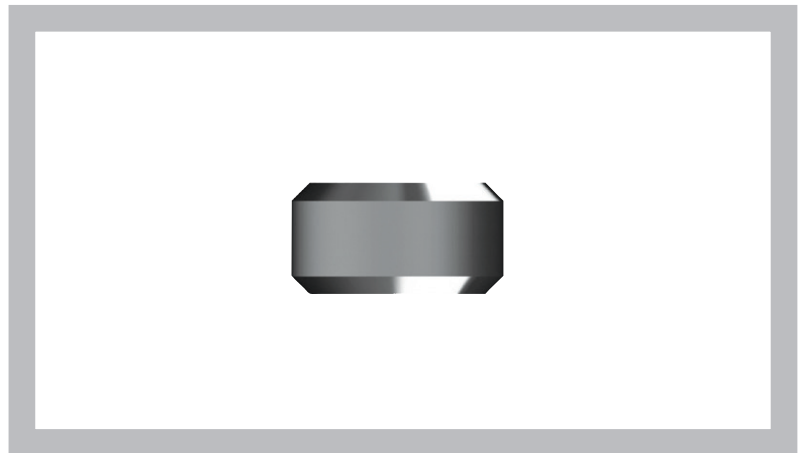
Part Number	Description
LCCT18351PCN	Hollow Top Pin 1
LCCT18352PCN	Hollow Top Pin 2
LCCT18353PCN	Hollow Top Pin 3
LCCT18354PCN	Hollow Top Pin 4
LCCT18355PCN	Hollow Top Pin 5
LCCT18356PCN	Hollow Top Pin 6
LCCT18357PCN	Hollow Top Pin 7
LCCT18358PCN	Hollow Top Pin 8
LCCT18359PCN	Hollow Top Pin 9



Master Pins

Part Number	Description
SP201-42*	Master Pin 2
SP201-43*	Master Pin 3
SP201-44*	Master Pin 4
SP201-45*	Master Pin 5
SP201-46*	Master Pin 6
SP201-47*	Master Pin 7
SP201-48*	Master Pin 8
SP201-49*	Master Pin 9

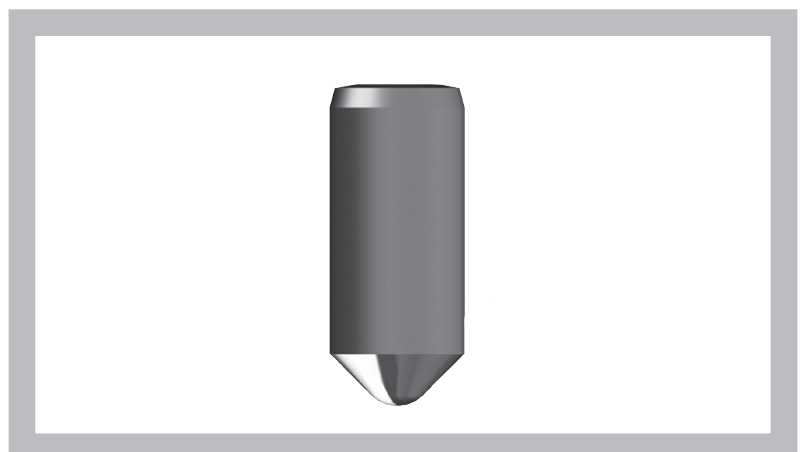
*PTO item



Bottom Pins

Part Number	Description
SP201-20*	Bottom Pin 0
SP201-21*	Bottom Pin 1
SP201-22*	Bottom Pin 2
SP201-23*	Bottom Pin 3
SP201-24*	Bottom Pin 4
SP201-25*	Bottom Pin 5
SP201-26*	Bottom Pin 6
SP201-27*	Bottom Pin 7
SP201-28*	Bottom Pin 8
SP201-29*	Bottom Pin 9

*PTO item



GEN6TX® Technical Reference Manual

Top Pin Usage



General

ASSA ABLOY recommends using anti-bump pins for all chambers in all Lockwood branded products with the exception of 670 and LIW cylinders. All Lockwood branded products are tested with anti-bump pins.

Standard Top Usage

Standard top pins are recommended for use with combined master pin and bottom pin length 0-9 in the cylinders listed below.

Cylinders:

- 201
- 255
- 334B
- 570
- 570E
- 577
- 3570
- 8217
- 8219
- 8466
- 9555
- NEX (includes 005 & Onyx internal Cylinder)

Non Standard Top Pin Usage

Cylinders:

- 001 (includes 680)
- 355
- 530
- 691
- 8221
- 8474

For the above cylinder list use the following top pin lengths:

Combined master and bottom pin length 0-2 = Standard Top Pin

Combined master and bottom pin length 3-6 = Medium Top Pin

Combined master and bottom pin length 7-9 = Short Top Pin

Note: SP530-336SS Short Top Pin Spring must be used with 001, 355, 530, 691, 8221 & 8474 cylinders.

Cylinders:

- 670
- LIW

For the above cylinder list use the following top pin lengths:

Combined master and bottom pin length 0-1 = Hollow Top Pin No.8

Combined master and bottom pin length 2-3 = Hollow Top Pin No.7

Combined master and bottom pin length 4 = Hollow Top Pin No.6

Combined master and bottom pin length 5-6 = Hollow Top Pin No.5

Combined master and bottom pin length 7 = Hollow Top Pin No.4

Combined master and bottom pin length 8-9 = Hollow Top Pin No.3

Note: CCT18067PCN Hollow Top Pin Spring must be used with 670 and LIW cylinders.

GEN6TX® Technical Reference Manual

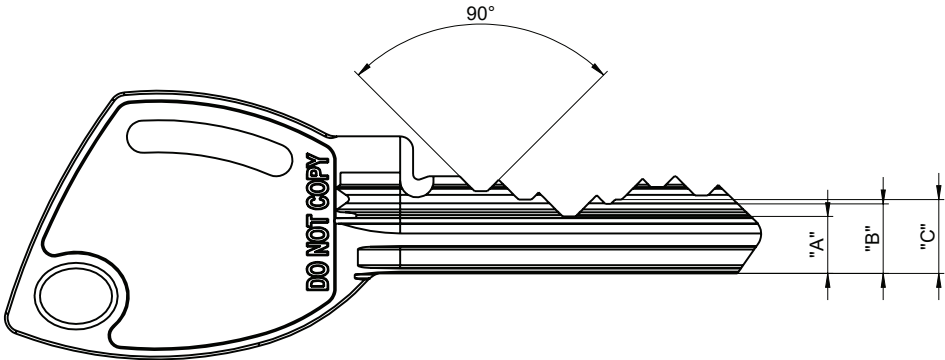
Key



Key Cutting Machines

ASSA ABLOY recommend that all Lockwood GEN6TX® Keys are cut to code rather than on duplicating machines.

If cutting on Silca Uno Code use card 405 .



Height of key bit after cutting

Standard Cut (S) #	0	1	2	3	4	5	6	7	8	9
T Cut (H or T) #	-	T1	T2	T3	T4	T5	T6	T7	T8	T9
"A"	8.54	8.16	7.78	7.40	7.02	6.64	6.26	5.88	5.50	5.12
"B"	-	8.16	7.78	7.40	7.02	6.64	6.26	5.88	5.50	5.12
"C"	-	8.54	8.16	7.78	7.40	7.02	6.64	6.26	5.88	5.50

NOTE: Standard cut depths from #0 to #9
T-pin cut depths from #1 to #9

Key Inserts

GEN6TX® Key inserts come in 12 colours to choose from.

*All items are PTO.

Colour Swatch*	Colour Name	Product Code
	White	CCG6TXWHITE
	Grey	CCG6TXGREY
	Black	CCG6TXBLACK
	Blue	CCG6TXBLUE
	Light Blue	CCG6TXLTBLUE
	Green	CCG6TXGREEN
	Dark Green	CCG6TXDKGREEN
	Yellow	CCG6TXYELLOW
	Orange	CCG6TXORANGE
	Red	CCG6TXRED
	Violet	CCG6TXVIOLET
	Pink	CCG6TXPINK

GEN6TX® Technical Reference Manual

Barrels



To create your Barrel replace ### with the desired profile.

All Gen6TX® barrels are supplied with construction holes by default where applicable.

001

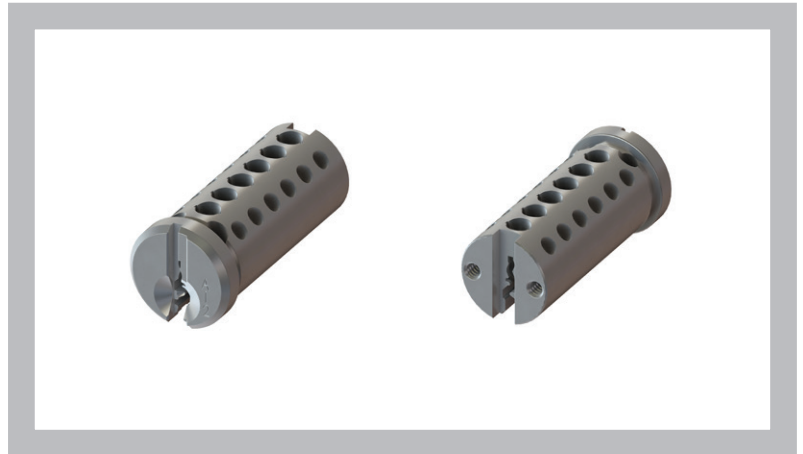
Part Number: BG6TX001###SC

For use with:

- 001 Deadlatch internal Cylinder
- Nexion Cylinders
- Onyx internal Cylinder
- 680 Cylinder
- 900 Macquarie internal Cylinder
- W75 Whitco Deadlatch internal Cylinder

Note:

- 001 with Safety Release & 001 with Safety Release & Lock Alert.
- 680 rounded body with oval screw hole plug cover.



201

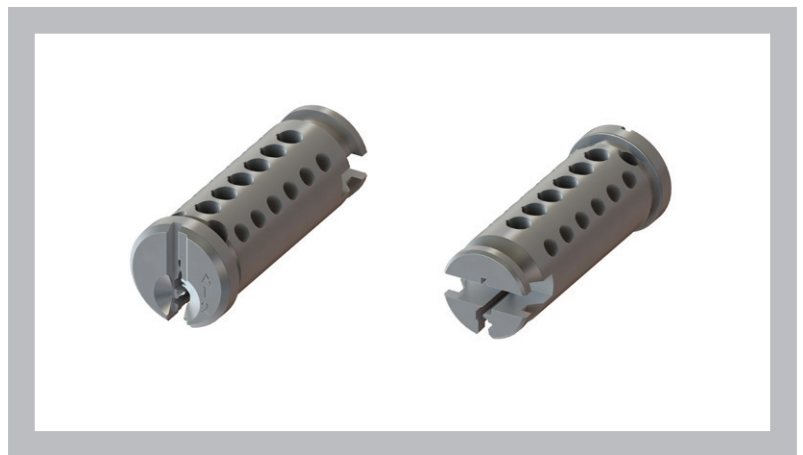
Part Number: BG6TX201###SC

For use with:

- 001 & 002 Deadlatch external Cylinder
- 100 & 201 Nightlatch external Cylinder
- 355 & 303 external Cylinder
- 200 & 211 Stream Latch external Cylinder
- 213 Stream Lock Deadbolt external Cylinder
- 507 Nightlatch external Cylinder
- 900 Macquarie external Cylinder

Note:

- Lockwood rim locks come standard with 5 pin rim Cylinder. A new 6 pin Cylinders housing will be required to use this barrel.

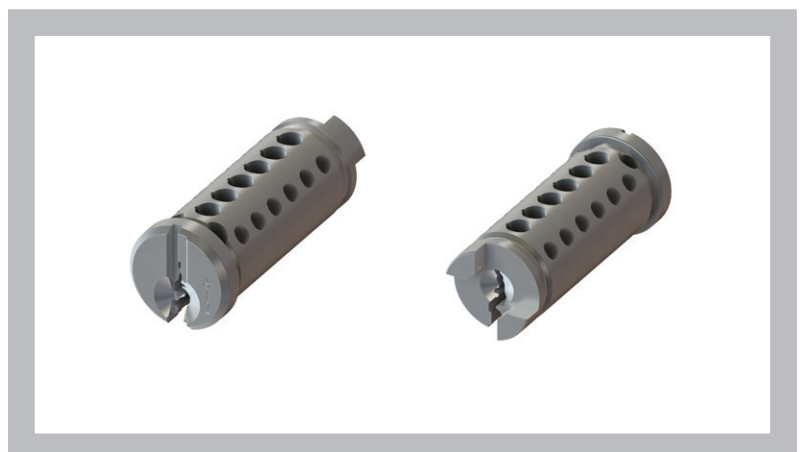


530

Part Number: BG6TX530###SC

For use with:

- 530 Cylinder for 530/930/950 Series Locksets
- 234 Padlocks (early removable core model ~Year 2000)
- Durabolt



GEN6TX® Technical Reference Manual

Barrels



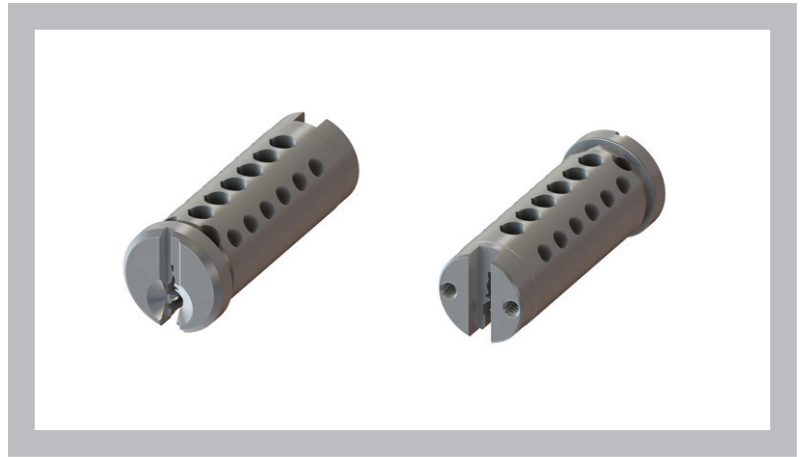
To create your Barrel replace ### with the desired profile.

570

Part Number: BG6TX570###SC

For use with:

- Selector Series Mortice Lock
- Synergy Series Mortice Lock
- Pentagon Series Mortice Lock
- 007 & 008 Deadbolt Cylinders
- 334 Padlock
- 355 internal Cylinder
- 500 Series Lockset Cylinders
- 570E Modular Base Cylinder
- 590 Short back set Mortice Lock
- 693 Cupboard lock (691 Cylinder)
- 777 Deadbolt Cylinders
- 3540 Series Mortice Lock
- 8217-5 Astra oval Cylinder
- 8217-6 Astra round Cylinder
- 8217-7 Astra flat sided Cylinder
- Airlock Cylinder
- LIW Lock-it-Well Cylinder
- Cortex (Mortice Lock version)



670

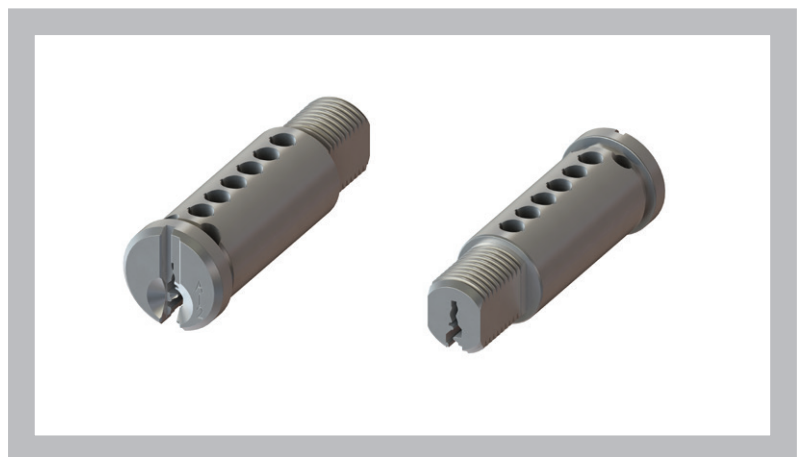
Part Number: BG6TX670###SC

For use with:

- 670 Cam Lock

Note:

- Requires use of hollow top pins & hollow top pin springs.



3570

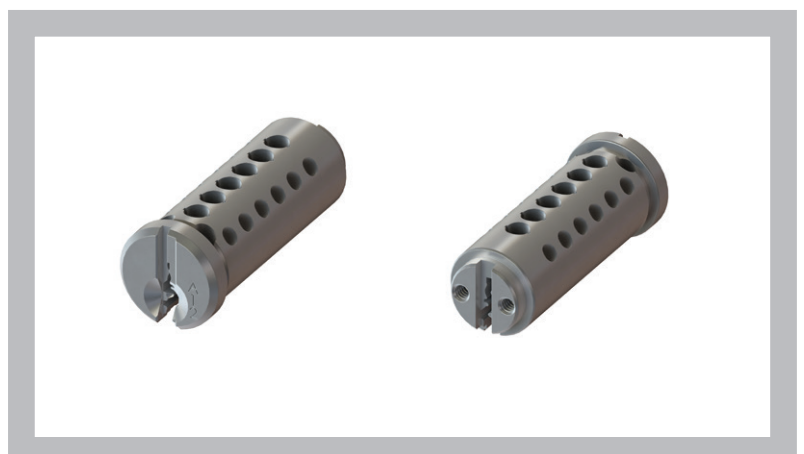
Part Number: BG6TX3570###SC

For use with:

- Synergy Series Mortice Lock Hold Back Cylinder

Note:

- Must be used with 3570 Cylinder housing.
- Cam screw pitching is different to a standard 570 barrel. Only the two piece hold back cam assembly is suitable for this barrel.



GEN6TX® Technical Reference Manual

Barrels



To create your Barrel replace ### with the desired profile.

7115

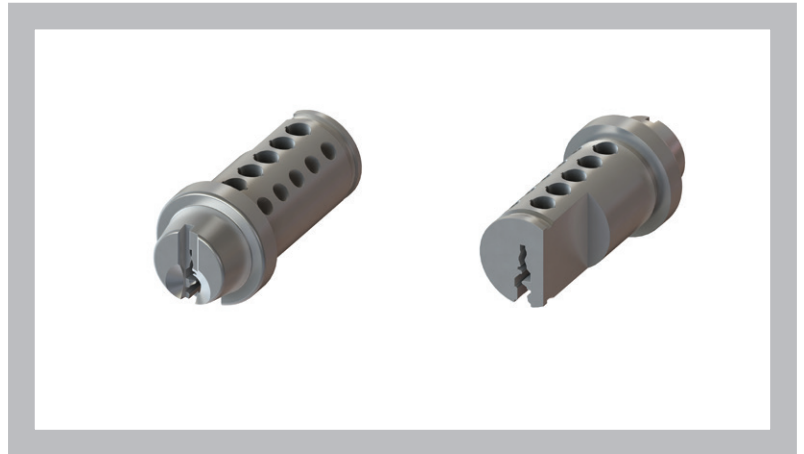
Part Number: BG6TX7115###SC

For use with:

- Symmetry Cavity Slider Cylinder
- Whitco Blaxland Cylinders

Note:

- This barrel is used with the standard 5 pin. Cylinder housing and the first chamber is not used. Only chambers 2-6 can be used.

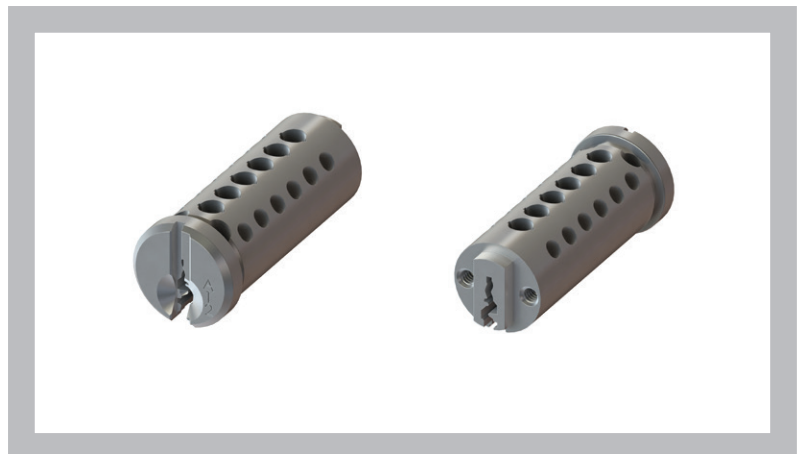


8218

Part Number: BG6TX8218###SC

For use with:

- 8218 Metal Craft threaded Cylinder
- 8219 Yale threaded Cylinder
- 8466 Kawnear threaded Cylinder



8221

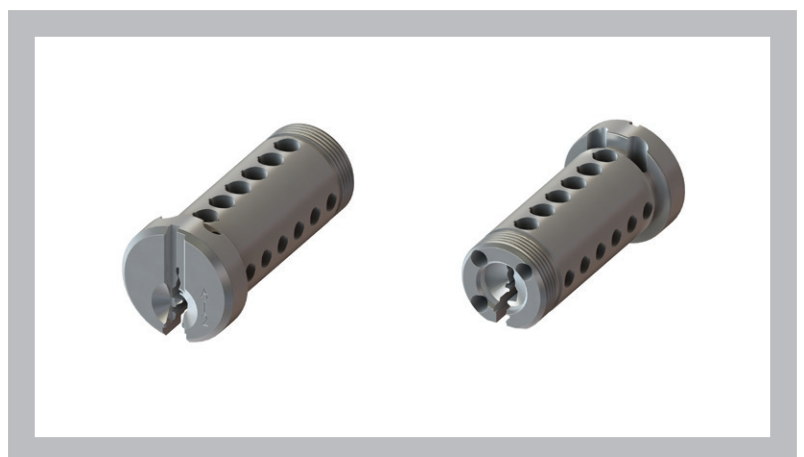
Part Number: BG6TX8221###SC

For use with:

- "PD" type Cylinders
- Onyx external Cylinder
- Symmetry 7105 & 7108 Deadbolt Cylinders
- Yale YK16 Series Knob Sets
- Yale YL17 Series Lever Sets
- Yale YDB1 Deadbolt Cylinders

Note:

- When keying the Onyx to 6 pin, a new 6 pin housing is required



GEN6TX® Technical Reference Manual

Barrels



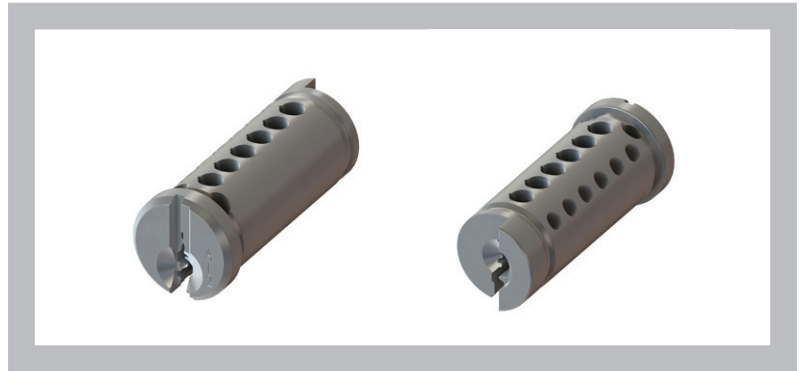
To create your Barrel replace ### with the desired profile.

8474

Part Number: BG6TX8474###CP

For use with:

- 8474 Garage L Handle Lock

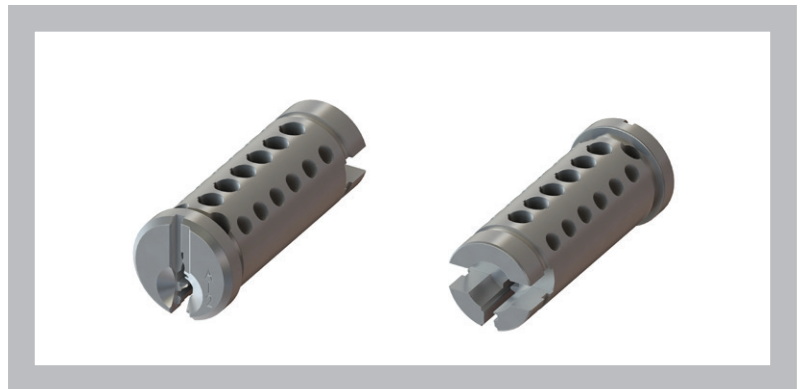


9555-1

Part Number: BG6TX95551###CP

For use with:

- 9555 Euro double cylinder fixed cam

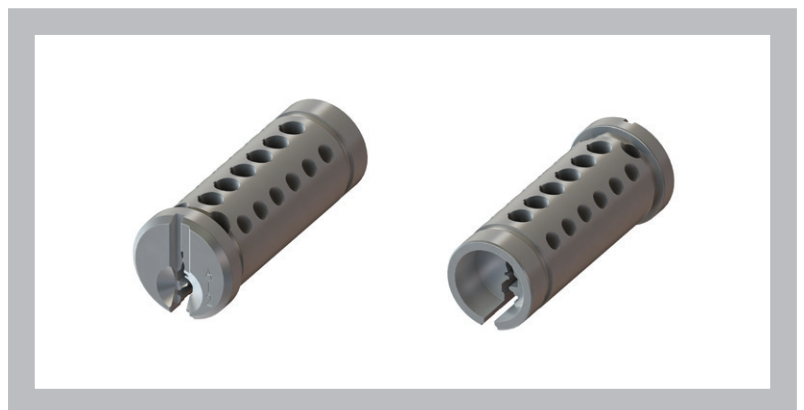


9555-2

Part Number: BG6TX95552###CP

For use with:

- 9555 Euro cylinder and turn fixed cam

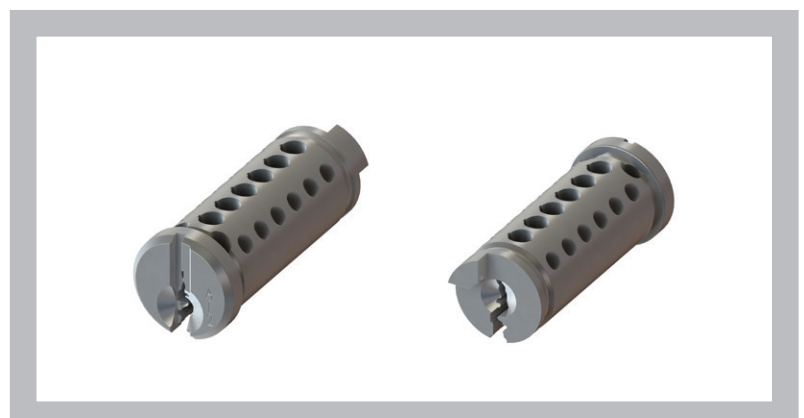


9555-3

Part Number: BG6TX95553###CP

For use with:

- 9555 Euro double cylinder lazy cam
- 9555 Euro cylinder and turn lazy cam
- 9555 Euro single cylinder fixed cam
- 9555 Euro single cylinder lazy cam



GEN6TX® Technical Reference Manual

Ordering Table



To create your Barrel replace ### with the desired profile.

Cylinder & Barrel Table

Cylinder	Description	Barrel
201G6TX4DSC	201 Rim Lock Cylinder	BG6TX201###SC
334BG6TX4DSC	334 Padlock Cylinder	BG6TX570###SC
530G6TX4DSC	530 Cylinder	BG6TX530###SC
570G6TX4DSC	570 Australian Oval Cylinder	BG6TX570###SC
3540G6TX4DSC	3540 Series Mortice Lock Cylinder	BG6TX570###SC
3570G6TX4DSC	3500 Series Hold Back Cylinder	BG6TX3570###SC
8221G6TX4DSC	8221 "PD" Cylinder	BG6TX8221###SC
9555-1G6TX4DCP	Euro double Cylinder fixed cam	BG6TX95551###CP
9555-2G6TX4DCP	Euro Cylinder & turn fixed cam	BG6TX95552###CP
9555-3G6TX4DSC	Euro single Cylinder fixed cam	BG6TX95553###CP

GEN6TX® Technical Reference Manual

Maintenance



Lubrication

ASSA ABLOY recommends using Inox MX3 lubricant.

- Spray the lubricant down the barrel keyway after assembly while holding the cylinder upside down.
- Operate the cylinder three times to spread the lubricant and wipe the cylinder clean of excess lubricant.

Never paint over cylinders.

GEN6TX® Technical Reference Manual

Coding

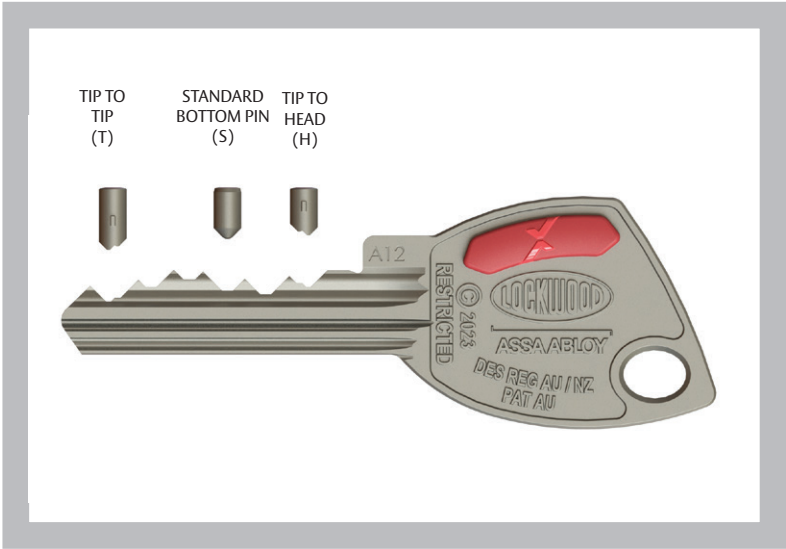


Coding

A ProMaster module has been developed with WH Software to assist with coding GEN6T Key Systems. The module incorporates the rules in this section and allows for flexibility around other recommendations.

Guidelines

- GEN6T uses both Lockwood Inline Pins 0-9 and Lockwood T Pins 1-9.
- Use of a pin deeper than 7 in the first chamber is not recommended.
- T Pins can be used in chamber positions 1-6.
- T Pin's can be used in either direction, ASSA ABLOY recommends H.
- T Pin direction is specified as indicated in the diagram below, either H or T.

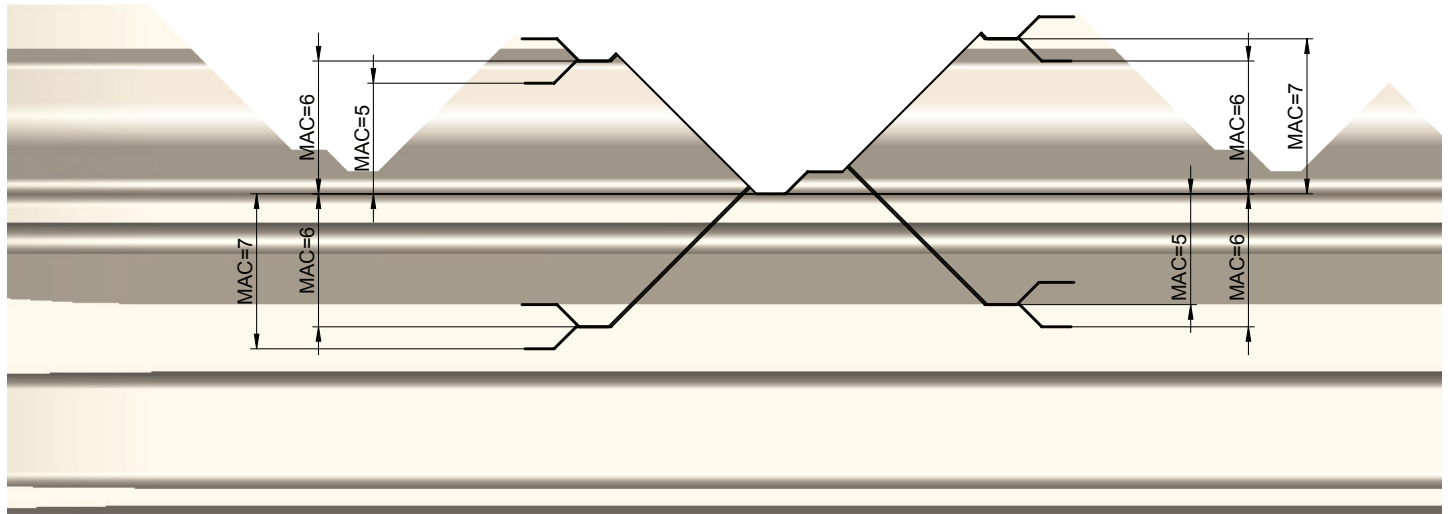
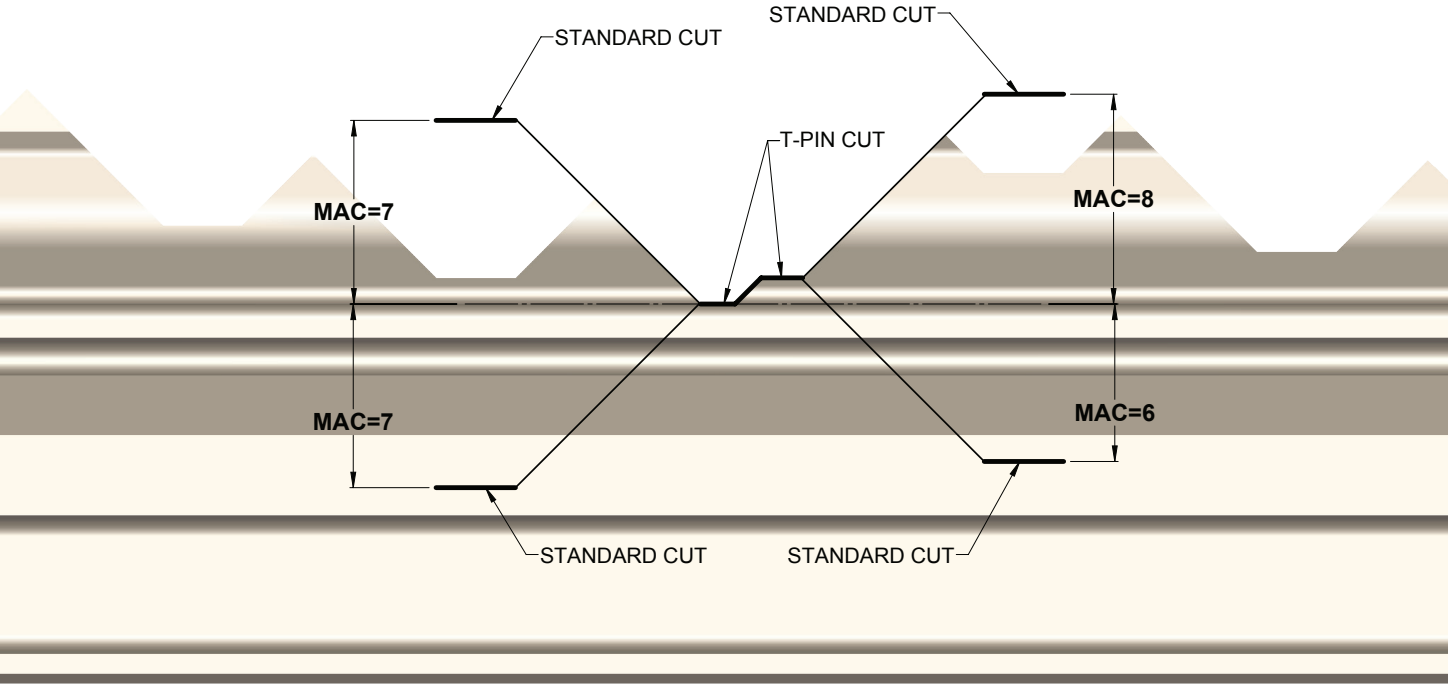


Rules

- A minimum of one T Pin must be used in any GEN6T cylinder.
- MAC's rule between standard cuts is 7.
- MAC's rules for T Pin cuts are calculated as described in the diagrams and table to the right.

From	Direction	To	MAC's
Standard Cut	Down to	Low High	7
Standard Cut	Up to	Low High	7
Standard Cut	Down to	High Low	8
Standard Cut	Up to	High Low	6
High Low	Down to	Low High	6
Low High	Down to	Low High	5
High Low	Up to	Low High	6
Low High	Up to	Low High	7
High Low	Down to	High Low	7
Low High	Down to	High Low	6
High Low	Up to	High Low	5
Low High	Up to	High Low	6

NOTE: Standard cut depths from #0 to #9
T-pin cut depths from #1 to #9



When it comes to safety it's primal, it's our survival, a basic human need. We want freedom to live, explore and rest without fear. To leave behind in safety our precious, cherished and most valuable things. And to come back to them exactly as we left them.

For as long as we have valuables, we will always need protection. Though the need for our products is driven by concerns, the Belief in our Brand is propelled by confidence. An unquestioned confidence in our ability to protect what is most important to you.

Our products provide peace of mind through strength, substance and style. Our reputation is forged in traditions, supreme workmanship, uncompromised values and above all our people. We are a trusted, tireless and vigilant guardian that protects families, households, trades and businesses.

Because if feeling safe is a basic human need, knowing you're safe is why Lockwood exists. For over 75 years, our guiding principle is and will always be: To take the worry out of protecting what is valuable to you.

Lockwood: *no worries*[®]



Lockwood is the leading brand in the Australian locking industry. With an established reputation for high quality products, this iconic brand provides a wide range of locking solutions to residential housing, commercial building and industrial application markets. Lockwood is supported by an extensive distribution and after-sales support network. Our customers include retailers, architects, trade and industrial personnel, locksmiths and security dealers.

ASSA ABLOY is the global leader in door opening solutions, dedicated to satisfying end-user needs for security, safety and convenience.

ASSA ABLOY is represented in all major regions, in both mature and emerging markets, with leading positions in Australia, Europe and North America.



The Lockwood 25 Year Mechanical Warranty

Our belief that we manufacture the finest premium products available in today's market place is backed by the Lockwood 25 Year Mechanical Warranty, ensuring that Lockwood continues to keep Australians safe by delivering security and peace of mind.

For warranty terms and conditions, please visit www.lockweb.com.au or call 1300WARRANTY

ASSA ABLOY Australia Pty Ltd
235 Huntingdale Road
Oakleigh, Victoria, 3166
Australia

1300 LOCK UP (1300 562 587)
lockweb.com.au

ASSA ABLOY New Zealand Ltd
6 Armstrong Road
Albany, Auckland, 0632
New Zealand

nzsales@assaabloy.com
Telephone +64 9415 7111
assaabloy.com/nz

Disclaimer

Whilst every effort has been made to ensure that the information contained in this manual is accurate at the time of publication, ASSA ABLOY Australia Pty Limited ("ASSA ABLOY") recommends that you consult ASSA ABLOY or its agents prior to placing an order to ascertain current information on specific products, as ASSA ABLOY reserves the right to make changes without notice. ASSA ABLOY will not be liable for any injury, loss or damage whatsoever, arising from any errors or omissions in the information contained in the manual or arising from the use or application of the information contained herein.

© 2023 copyright by ASSA ABLOY All rights reserved

