

# Adjustable, Self-Closing, Aluminium Gate Hinges



## Three mounting styles & colours available

- Adjust tension from both ends (tension adjustment always facing up)
- Low-friction polymer pivot washers (long life & low maintenance)
- 6 tension settings for finer adjustment (suit a range of metal gates)
- Single-handed tension adjustment (6mm slot-head screwdriver)
- Side-fixing legs for quick alignment and added fixing strength
- Internal stainless steel torsion spring
- Suits left- or right-swinging gates
- Self-closes gates up to 20kg



\* White and Bronze hinges available only by special order in Australia.



**D&D Technologies**

World's most trusted gate hardware



**KF3A1BL**  
Black (Gloss)  
**25mm leaf width**  
Mounts to post, or wall  
if no post available



**KF3ABL**  
Black, White\* or Bronze\*  
Mounts to post, or wall  
if no post available

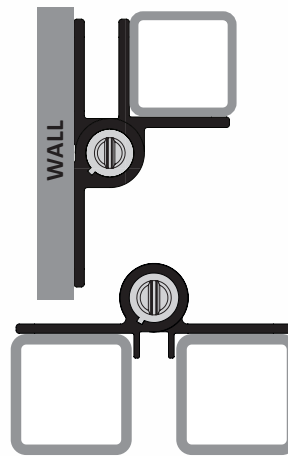


**KF3**  
Black, White\* or Bronze\*  
Alignment ridges for fast  
and easy installation



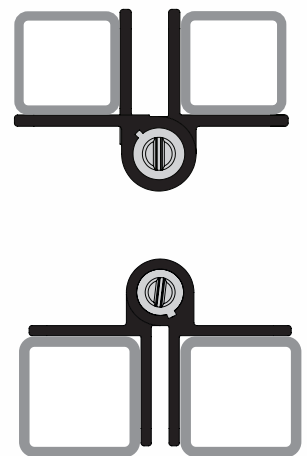
**KF3L2**  
Black, White\* or Bronze\*  
Two side-fixing  
legs for added strength

**KF3A1/KF3A**  
Post/Wall-to-Gate



**KF3**  
Post-to-Gate mount  
with alignment ridges

**KF3A1/KF3A**  
Post-to-Gate



**KF3L2**  
Post-to-Gate mount  
with side-fixing legs

## Product Dimensions

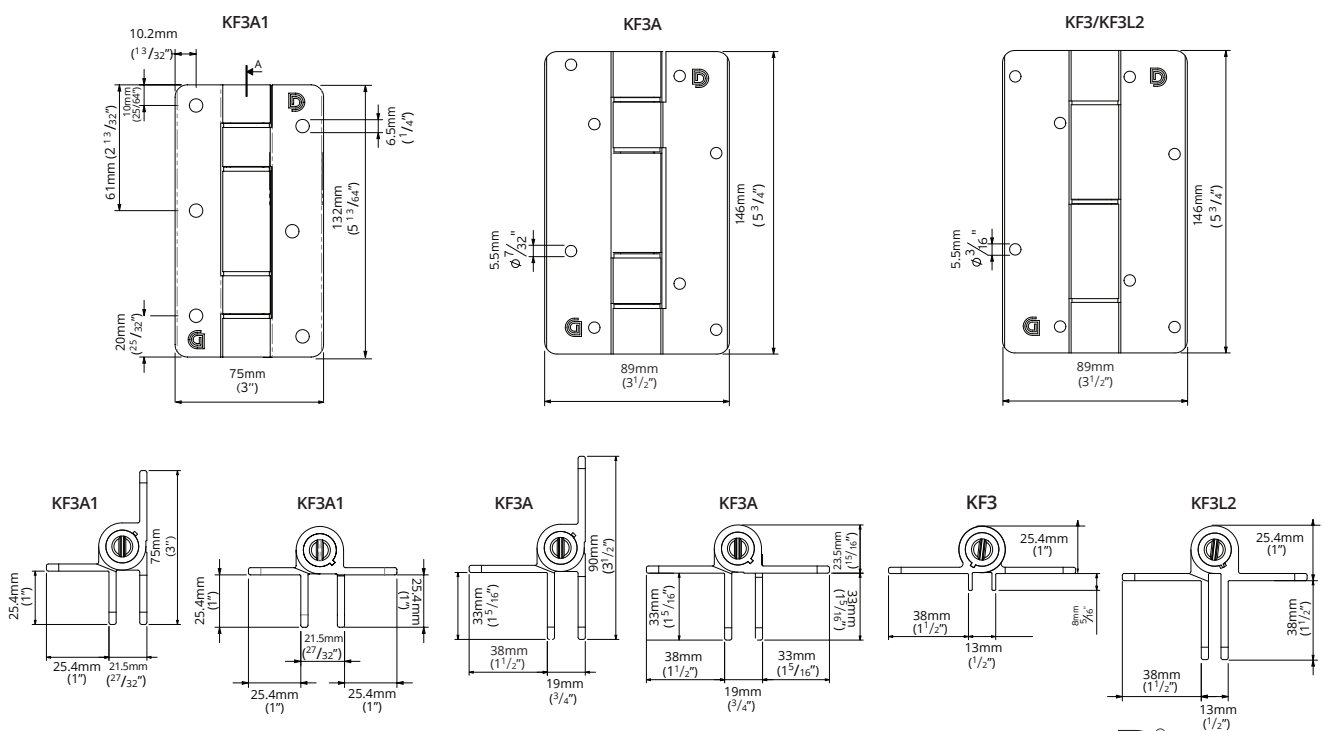
CODE	COLOUR	MODEL/FEATURE	GAP VARIANCE
KF3A1BL	Black Gloss	Wall or post mounted	Fixed at 21.5mm
KF3ABL	Black Gloss	Wall or post mounted	Fixed at 19mm
KF3ABR*	Bronze Satin	Wall or post mounted	Fixed at 19mm
KF3AWT*	White Gloss	Wall or post mounted	Fixed at 19mm
KF3BL	Black Gloss	Alignment ridges	Fixed at 13mm
KF3BR*	Bronze satin	Alignment ridges	Fixed at 13mm
KF3WT*	White Gloss	Alignment ridges	Fixed at 13mm
KF3L2BL	Black Gloss	2 Side fixing legs	Fixed at 13mm
KF3L2BR*	Bronze Satin	2 Side fixing legs	Fixed at 13mm
KF3L2WT*	White Gloss	2 Side fixing legs	Fixed at 13mm

**NOTE: New KF3A1BL (25mm wide leaf) model sold in pairs.**

**All other KwikFit® Aluminium models sold as single hinges.**

*For pairing or kitting options, please contact your D&D sales representative.*

*\*White and Bronze hinges available only by special order in Australia.*



[www.ddtechglobal.com](http://www.ddtechglobal.com)

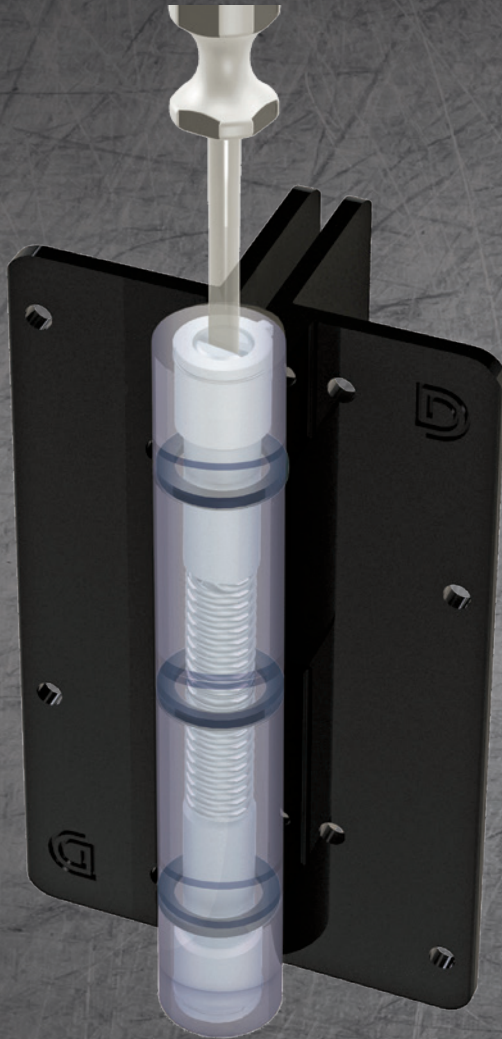
Unit 6, 4-6 Aquatic Drive, Frenchs Forest NSW 2086  
Tel: (02) 9454 7888 Email: [sales@ddtech.com.au](mailto:sales@ddtech.com.au)

**D<sup>®</sup>**  
**D&D Technologies**  
World's most trusted gate hardware



**KWIKFit™****ALUMINUM**

## Traditionally styled, self-closing, aluminum gate hinges



### Patented tension adjustment

- Adjust tension from both ends (tension adjustment always facing up)
- 6 tension settings for finer adjustment (suit a range of metal gates)
- Single-handed tension adjustment (using slot-head screwdriver)

### Polymer pivot design

Low-friction polymer pivot washers provide long life & low maintenance

### Side-fixing legs

For quick alignment during installation plus added fixing strength

### Stainless steel spring

Internal torsion spring constructed of stainless steel to prevent binding and staining

### Versatile installation

Suits left- or right-swinging gates

### Gate weight

Self-closes gates up to 44 lb (20kg)

### 3 finishes available

Aluminum with powder-coated finish in Black, Bronze or White (KF3A1BL model only available in black)



### 1" (25mm) narrower leaf model

Now 10% smaller in size. Designed to suit smaller post sizes, with a narrower leaf. Only available in black.



KF3A



KF3A1BL

