



# Replacing Optimum with Pinnacle Sliding Door Lock

## Installation instructions

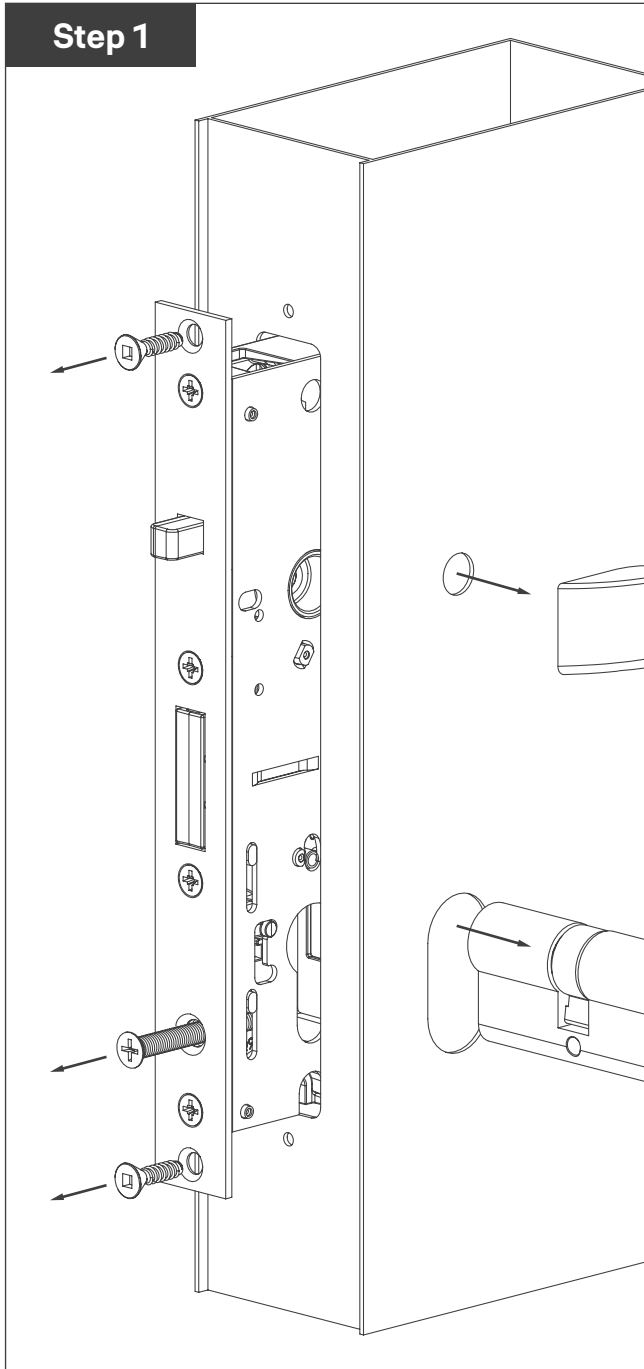
**Application:** Provides safe latching or secure deadlocking for sliding aluminium doors.

**Operation:** Key to lock and unlock.

**Tools Required:**

- Drill
- #1 Square Drive
- ø3.2mm Drill Bit
- Phillips Screwdriver

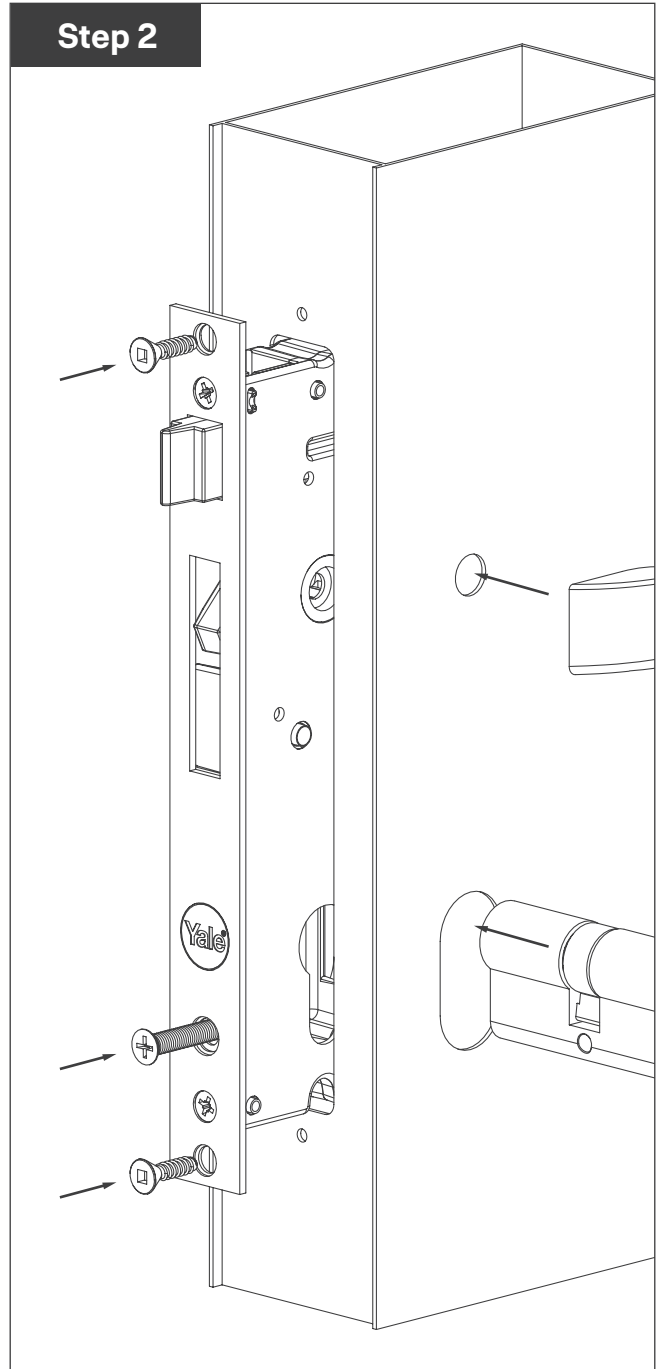
### Step 1



### Removing Optimum

- Remove the furniture from the door and the cylinder from the lock
- Unscrew the lock fixing screws.
- Remove the lock from the cutout in the door.

### Step 2



### Installing Pinnacle

- Fit replacement lock into cutout in the door.
- Use fixing screws to fix lock into place.
- Replace cylinder into the lock and check for function by depressing anti-slam and operating the cylinder.
- Replace the furniture onto the door.



# Replacing Optimum with Pinnacle Sliding Door Lock

## Installation instructions

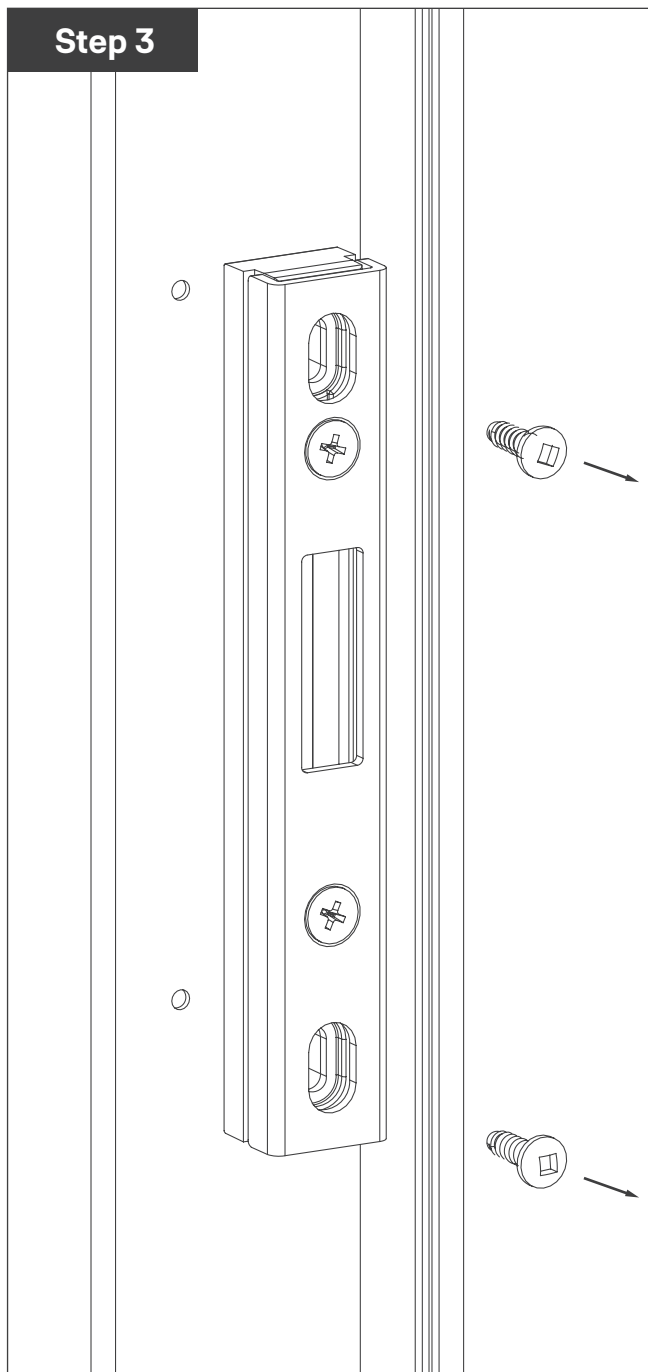
**Application:** Provides safe latching or secure deadlocking for sliding aluminium doors.

**Operation:** Key to lock and unlock.

**Tools Required:**

- Drill
- #1 Square Drive
- ø3.2mm Drill Bit
- Phillips Screwdriver

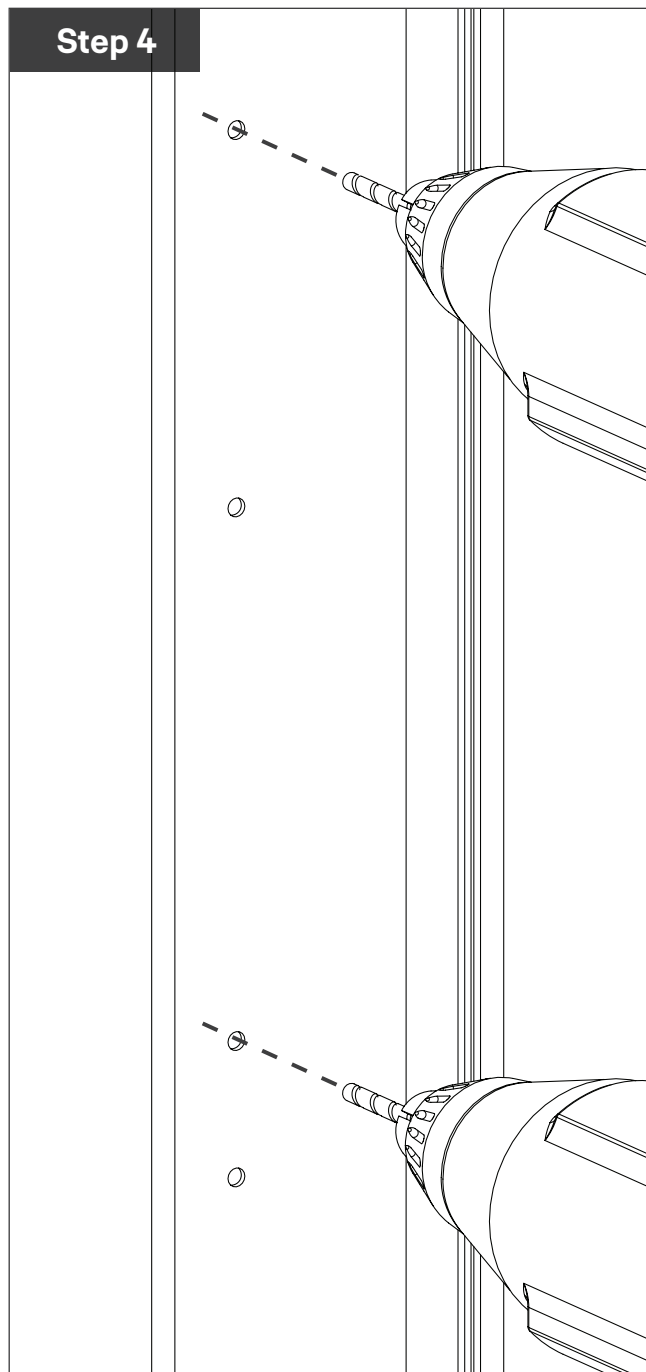
### Step 3



#### Removing Optimum strike

- Remove screws

### Step 4



#### Extra Holes

- Drill extra holes to fix PINNACLE strike refer PINNACLE mortise SDL instructions



# Replacing Optimum with Pinnacle Sliding Door Lock

## Installation instructions

**Application:** Provides safe latching or secure deadlocking for sliding aluminium doors.

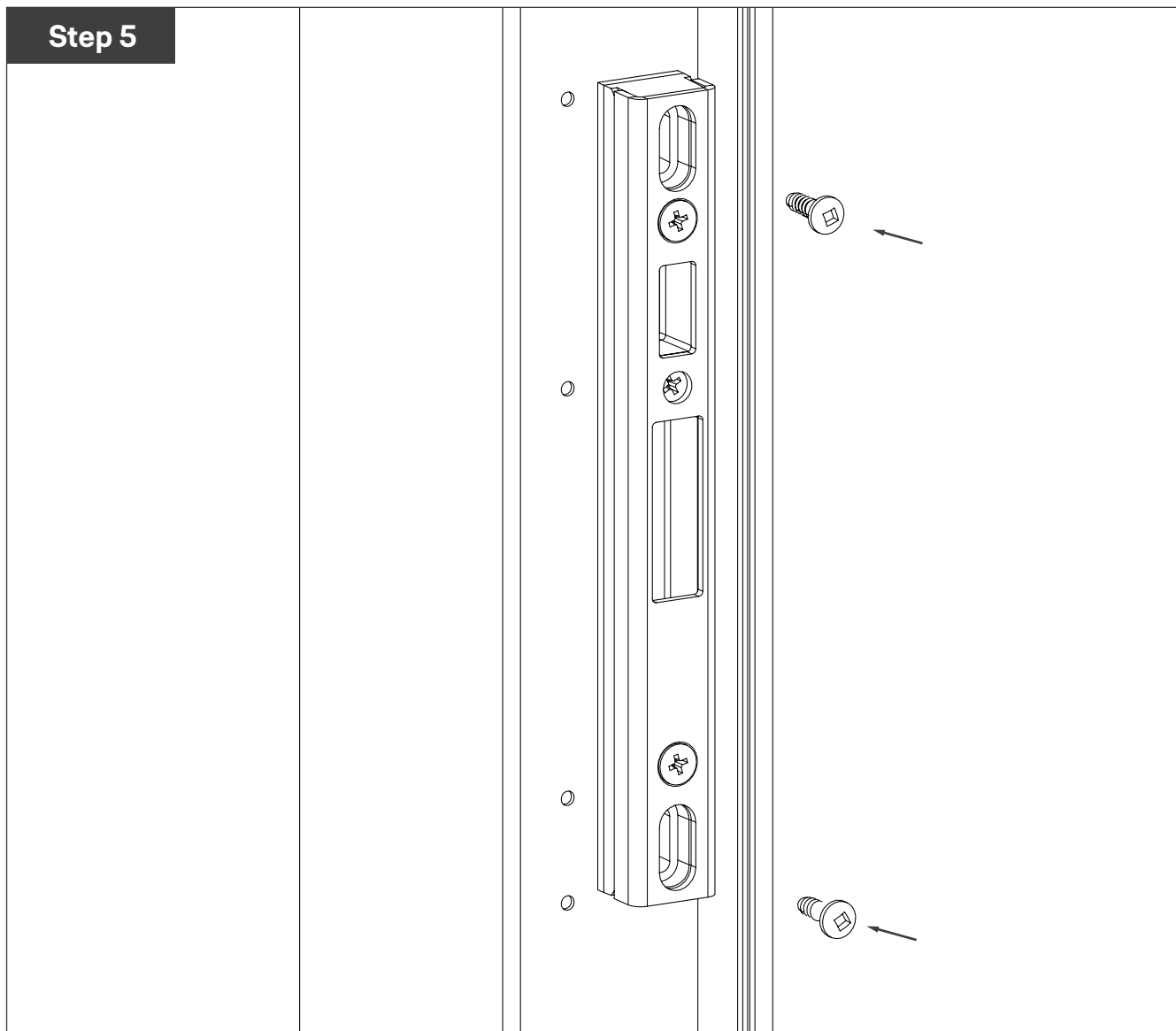
**Operation:** Key to lock and unlock.

**Tools Required:**

- Drill
- #1 Square Drive

- ø3.2mm Drill Bit
- Phillips Screwdriver

### Step 5



### Inserting Pinnacle Strike

- Fix the PINNACLE strike to the frame.
- The strike may need adjustment in and out to function correctly.
- The bottom fixing hole of the previous strike will not be covered by the new strike

**10 Year Warranty:** The warranty covers manufacturing defects, standard finishes but excludes plated finishes or finishes exposed to a corrosive environment. The warranty excludes damage caused by installation contrary to written instructions and incidental or consequential damage. We recommend regular cleaning with mild detergent.

**10  
YEAR  
WARRANTY**

ASSA ABLOY New Zealand Limited  
6 Armstrong Road, Albany, Auckland 0632, New Zealand

[www.yalehome.com/nz](http://www.yalehome.com/nz)  
For customer feedback: [nzsales@assaabloy.com](mailto:nzsales@assaabloy.com)

Part of ASSA ABLOY



Q50308\_0325