

Commercial Hardware Guide

ASSA ABLOY

The global leader in
door opening solutions





Scheduling Service

ASSA ABLOY has a skilled team of dedicated specifiers to help with all your door hardware specification needs. With such a variety of architectural hardware and locking solutions available, specifying the most appropriate product can be a challenge. Our architectural consultants will work with you to identify your needs and offer solutions on:

- Architectural Hardware
- Electric Locking
- Security
- Access Control
- Folding & Sliding
- Automatic Sliding Doors (Besam)



Contents

Assa Abloy Openings Studio	2
Digital Door Locks	4
Brass Based Lever and Base Options	8
Velocity Range	15
Nero Collection	16
Artefact Range	17
Key in Knob and Key in Lever	19
Nightlatches	20
Detention Series	21
Pull Handles	22
Mortice Locks	24
Specification Guide	26
Electromechanical	27
Door Closers	31
Exit Devices	36
Keying	37
Fabricator Products	39
General	40

BIM SOFTWARE

Get acquainted with Openings Studio

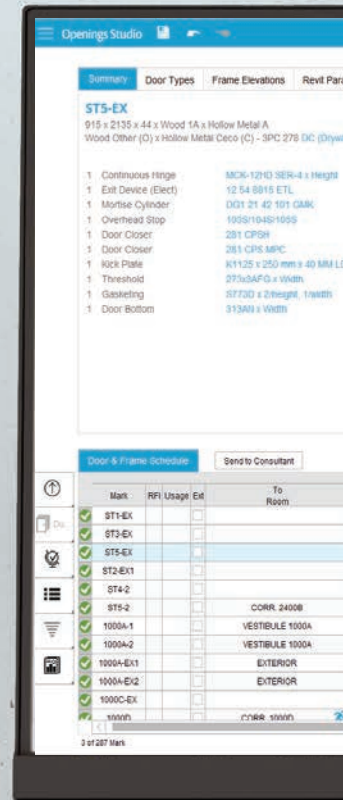
Seamlessly transfer project data from BIM design software for complete door hardware specifications and schedules.

Access manufacturer catalogues, technical data sheets, wiring diagrams, templates and more.

Create complete openings with doors, frames, hardware, and specifications and render the openings in 3D.

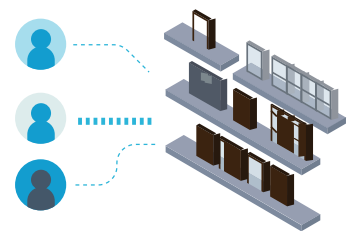
Track changes to door openings through the change log management system.

Produce formatted specifications matching 3D models for project contract documents.



Get to Know Openings Studio

Openings Studio is a software tool designed for all stakeholders in the building process and for the entire lifecycle of the building. It integrates directly with design software, such as Autodesk Revit®, to seamlessly transfer project data for complete door hardware schedules and specifications.

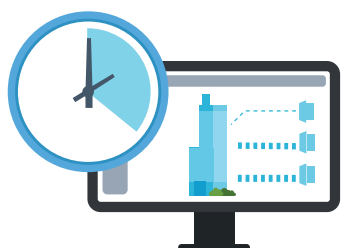
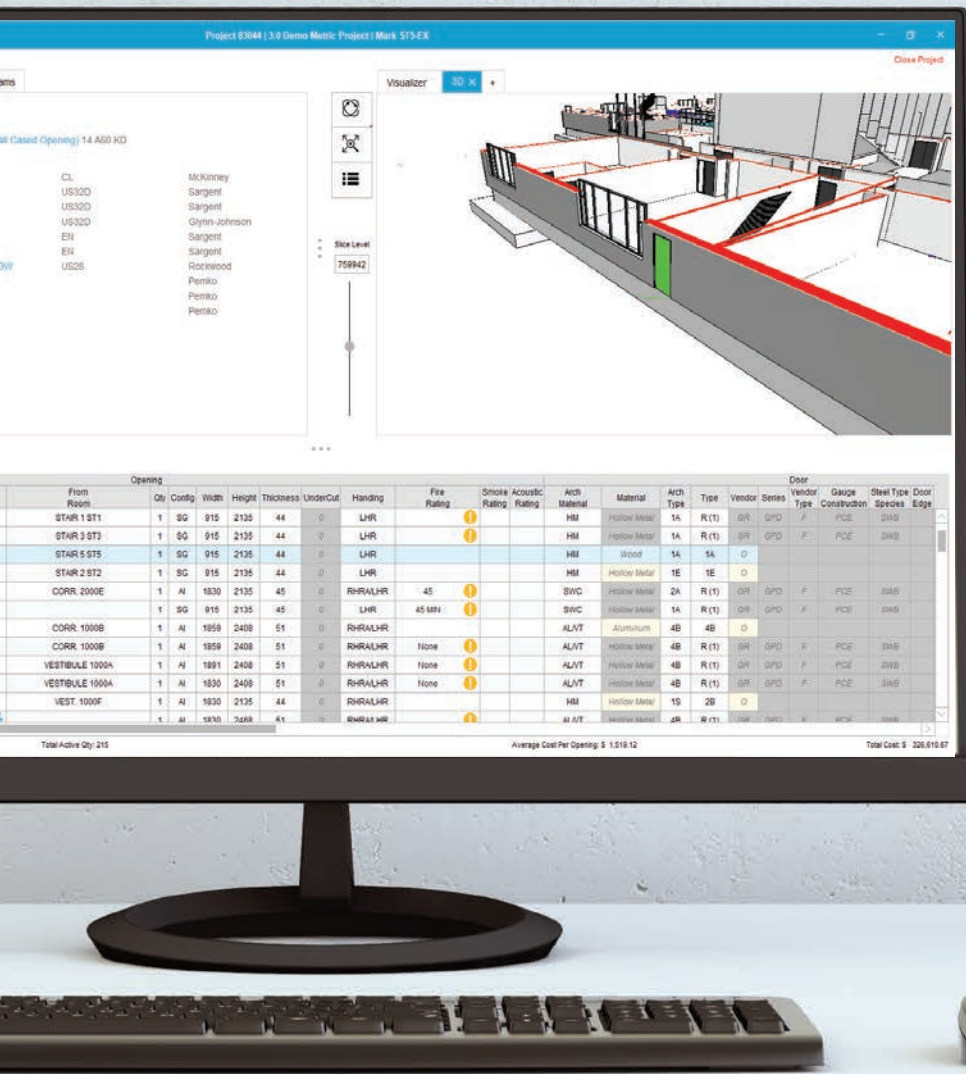


Easy Collaboration

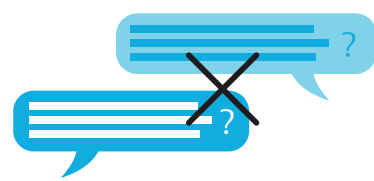
Gain universal access to design standards for all stakeholders

ASSA ABLOY

Openings Studio



Save Time
More efficiently manage building projects



Eliminate Confusion
No more costly mistakes when communicating with spec writers

Visit **OpeningsStudio.com** to download a free copy. Need a demo? Our consultants are ready to help! Contact your Assa Abloy representative for more information.

3109+ Digital Door Lock



4109+ Digital Door Lock



Features:

- Various Access - by proximity card identification, PIN code or key for your convenience
- Easy registration of cards
- Scrambling code
- Mechanical override key
- Break-in alarm
- Automatic locking (optional)
- Anti-panic egress
- Safe handle (ideal for small children)
- Low battery warning and emergency powercontacts
- Remote control (optional)

Features:

- Various Access - by fingerprint verification, PIN code or key for your convenience
- One touch fingerprint verification method (easy scan)
- Scrambling code
- Mechanical override key
- Break-in alarm
- Automatic locking (optional)
- Anti-panic egress
- Safe handle (ideal for small children)
- Low battery warning and emergency powercontacts
- Remote control (optional)

PRODUCT SPECIFICATION

Type	Mortice lock
Proximity card keys	4 (Max 40)
Mechanical keys	2
PIN code	6-12 digits
Finish	Stainless Steel
Door type	Timber / Aluminium
Door thickness	40-95mm
Backset	60mm / 70mm
Part number	SYDM3109PLUS/60 SYDM3109PLUS/70

PRODUCT SPECIFICATION

Type	Mortice lock
Fingerprints	Up to 20
Mechanical keys	2
PIN code	6-12 digits
Finish	Black
Door type	Timber / Aluminium
Door thickness	44-95mm
Backset	60mm
Part number	SYDM4109PLUS

Electronic Digital Door Lock

The world's favourite lock



Assure Locks



ASSURE KEYED

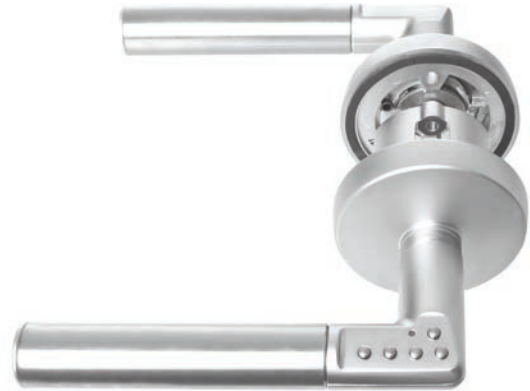
ASSURE KEYLESS

ASSURE SL

Features:

- Unlimited number of locks and keys can be managed by the applicable Yale app
- Ten year warranty for finish and mechanical, one year for electronics
- Certified ANSI/BHMA A156.36, Grade 2
- Assure Keyed: Has key override and can be keyed to match other locks for one key solution
- Assure Keyed & Keyless: Create up to 12 entry codes for access by keypad
- Assure SL: Create up to 25 entry codes for access by keypad
- Assure SL: HomeKit compatible with the optional iM1 Network Module*, enabling the door to be locked and unlocked from anywhere via the Yale Secure app**

Code Handle



Features:

- Lever handle with integrated code lock
- Program up to 9 User codes, 4-6 digits in length
- Keypad access control lever
- Supplied with Yale 60mm latch
- Easy to install
- Ideal for retrofit installations
- Programmable administration code for setting lock operation and user programming
- Manual or automatic locking
- Passage mode
- Code lockout after 5 incorrect attempts
- Durable stainless steel handles
- Right and left handed versions

PRODUCT SPECIFICATION

Type	Digital deadbolt
Mechanical keys	Depends on model selected
PIN code	4-8 digits
Finish	Satin Nickel / Oil Rubbed Bronze***
Door type	Timber / Aluminium
Door thickness	35-56mm
User codes	12 for Keyed/Keyless & 25 for SL
Part number	Keyless YRD446NRSN (Satin Nickel) Keyed YRD426NRSN (Satin Nickel) SL YRD256NRSN (Satin Nickel) SL YRD256NRORB (Oil Rubbed Bronze) SL YRD256-iM1-SN (Satin Nickel) SL YRD256-iM1-ORB (Oil Rubbed Bronze)

PRODUCT SPECIFICATION

Type	Digital Deadlatch
PIN code	4-6 digits
Finish	Stainless Steel / Satin Pearl
Door type	Timber / Aluminium
Rose	70mm
Door thickness	32-55mm
Backset	60mm
User codes	9
Part number	SY8816RSS SY8816LSS

*Optional iM1 Network Module sold separately or together. ** Home Hub set-up required.
***Oil Rubbed Bronze only available on the Assure SL.

Electronic Digital Door Lock



ASSA ABLOY

SMARTair™



What is SMARTair™?

SMARTair™ is a cable free access control system that is simple to install, configure, administer and maintain, offering an intelligent yet simple step up from keys. It's a cost effective alternative to traditional access control. No bells, whistles, or wires, just sleek, reliable security.

SMARTair™ gives you the security of knowing that lost credentials can quickly be prevented from gaining access, the flexibility to restrict user movements across your school, as well as the ability to show historical movement through audit trails.

No cables means no installation hassles, and a reduced cost.



Update on Card

- System operators use software to apply permissions to the users
- Cards carry their own data to the doors – no need for cabling infrastructure
- Perfect for difficult or impossible to wire sites
- Automatic revalidation of cards means no more lost card issues

Wireless Online

- System operators use software to apply permissions to the users
- Wireless hubs carry the data to the doors in real time
- Perfect for difficult, or impossible to wire sites
- Lockdown all the doors in the building with a single click

Stand-Alone

- No software requirement makes this the simplest access control system
- All programming is done at the door unit with a single programming card
- Perfect for smaller sites or where cost is a consideration
- Once installed, the system can be up and running in seconds

Mechanical Digital Door Lock



ASSA ABLOY

3772 DX Digital Lock



3782 DX Digital Lock



530 DX Digital Lock



Features:

- Suits door thickness of 35 to 50mm
- Utilises Lockwood Selector 3772 Series Cylinder Mortice Deadlatch
- 60mm standard backset
- Pin tumbler mechanism with round brass cylinder
- Operated by keypad outside
- Operated by lever inside

Features:

- 30mm standard backset
- Suits open-out type door
- Timber door thickness 32 to 50mm
- Metal door thickness 35 to 50mm
- Operated by keypad outside
- Operated by lever inside (sold separately)
- Short face aluminium strike plate included

Features:

- Suits door thickness of 35 to 45mm
- 60mm standard backset tubular latch
- 70 and 127mm latches available separately on application
- Operated by keypad outside
- Operated by knob inside

PRODUCT SPECIFICATION

	3772	3782	530
Backset	60mm		127mm
Bolt / Latch Projection	19.5mm	18mm	15mm
Bolt Material	Stainless Steel	Stainless Steel	Stainless Steel
Door Thickness Range	32-50mm	32 to 50mm for timber doors 35 to 50mm for metal doors	35-50mm
Part number	L3772DXKOLSC L3772DXKORSC L3772DXLSC L3772DXRSC	L3782DXLSC, L5782DXLSC, L5782DXRSC, L5792DXRSC, L6782DXRSC, L6792DXRSC	L530DXSC

Brass Levers and Knobs



ASSA ABLOY

Finger clearance is defined as the clearance between the lever and the base of the rose or plate at the centre of the lever. The tables below are calculated using an assembled plate/rose thickness of 12.5mm. Due to a different bearing bush, the projection and finger clearance of levers in the 4800/5800 Series is 2.5mm larger than the value shown (except Lever 90).



KNOB 20

Diameter	50mm
Projection	73mm

Not compatible with 1220 Symphony internal rose.



LEVER 32

Length	107.5mm
Projection	53mm
Finger clearance	35.5mm



INTERMEZZO 41

Length	130mm
Projection	61.5mm
Finger clearance	40.5mm

**Lever is an asymmetrical design and therefore must be handed.*



LEVER 60

Length	121mm
Projection	65mm
Finger clearance	54.2mm



SONATA 45

Length	117.5mm
Projection	57mm
Finger clearance	40mm



VELOCE 53

Length	123mm
Projection	73.5mm
Finger clearance	45mm

**Lever is an asymmetrical design and therefore must be handed.*



VING 74

Length	120mm
Projection	53mm
Finger clearance	45mm



LEVER 76

Length	125mm
Projection	50mm
Finger clearance	42mm



OVERTURE 59

Length	121mm
Projection	57.5mm
Finger clearance	38mm

Brass Levers and Knobs



ASSA ABLOY



LEVER 77

Length	121mm
Projection	51mm
Finger clearance	40.5mm



CANDENZA 78

Length	118mm
Projection	52mm
Finger clearance	30mm



LEVER 70

Length	121mm
Projection	53mm
Finger clearance	37mm



LEVER 85

Length	125.5mm
Projection	51mm
Finger clearance	43.5mm



LEVER 90

Length	118.5mm
Projection	52mm
Finger clearance	45mm



LEVER 80

Length	123mm
Projection	49mm
Finger clearance	40mm



CHORUS LINE 97

Length	120mm
Projection	50.5mm
Finger clearance	34.6mm

Lockwood Symphony Series door furniture is manufactured from high quality solid brass material. The comprehensive lever range matched with concealed screw fixings by way of threaded rose trims, provides a stylish look for the most elegant interiors.

The accessory range includes cylinder escutcheons, emergency turns and disabled accessible turns. For installers, the unique turn mechanism adjusts to suit the thickness of the door and removes the need to cut tail bars to length.

1220 Symphony Series Brass Door Handles



WITH OVERTURE 59



WITH LEVER 70



WITH VING 74

1420 Symphony Series Square Rose Door Handles



WITH LEVER 76



WITH LEVER 80



WITH LEVER 32

PRODUCT SPECIFICATION	
Handing	A removable stop screw allows all symmetrically designed levers (e.g. Cadenza) to be handed on site. Levers of asymmetrical design (e.g. Veloce) cannot be reversed. Specify left or right handed when ordering
Materials	All Lockwood roses and levers contained in the 1220 and 1420 series are of solid brass construction
Fixing	Fully concealed on both sides
Door Thickness	Synergy 3570 Series: 32mm to 50mm Lockwood 5260 Latches: 33mm to 50mm
Standard Finishes	Satin Chrome Brushed (SC)
Non-Standard Finishes	Chrome Plate (CP) Polished Brass (PB) Polyester Powdercoat (PC)
Special Finishes	Architectural Bronze (AZ) Architectural Bronze Unlacquered (AU) Antique Copper (AC) Polished Brass Unlacquered (BU) Satin Brass (SB) Oil Rubbed Bronze (ORB)

1360 and 1370 Series



ASSA ABLOY

Lockwood 1360 and 1370 Series door furniture is manufactured from high quality solid brass material. The comprehensive lever range matched with ease of installation and compatibility with a wide range of mortice locks defines simple and reliable.

The accessory range includes cylinder escutcheons, emergency turns and disabled accessible turns. For installers, the unique turn mechanism adjusts to suit the thickness of the door and removes the need to cut tail bars to length.

1360 Series Brass Door Handles



WITH INTERMEZZO 41



WITH SONATA 45

1370 Series Brass Door Handles



WITH CANDENZA 78



WITH CHORUS LINE 97

PRODUCT SPECIFICATION	
Materials	All Lockwood roses and levers contained in the 1360 and 1370 series are of solid brass construction
Fixing	Roses are designed to fit back to back. If outside rose is specified with concealed fixing, then the inside rose must be visible fixed. Roses numbered 1360, 1362, 1364, 1370, 1372 and 1374 are concealed fixed, roses numbered 1361, 1363, 1365, 1371, 1373 and 1375 are visible fixed
Door Thickness	Synergy 3570 Series: 32mm to 50mm Lockwood 5260 Latches: 33mm to 50mm
Standard Finishes	Satin Chrome Brushed (SC)
Non-Standard Finishes	Chrome Plate (CP) Polished Brass (PB) Polyester Powdercoat (PC)
Special Finishes	Architectural Bronze (AZ) Architectural Bronze Unlacquered (AU) Antique Copper (AC) Polished Brass Unlacquered (BU) Satin Brass (SB) Oil Rubbed Bronze (ORB)

1800 and 2800 Series



ASSA ABLOY

For a smart look choose this rectangular plate with bevelled edges and corners. It features concealed fixing on the outside plate.

Application

Designed for use with Lockwood Selector and Synergy Mortice Locks and Latches.

1800 Series Square Brass Plate Furniture



2800 Series Round Brass Plate Furniture



PRODUCT SPECIFICATION	
Door Thickness	External plates are supplied with fixing screws to suit door thickness between 32 and 45mm
Dimensions	166 x 48 x 12mm
Fixing	Plates are designed to fit back to back. If outside plate is specified with concealed fixing, then the inside plate must be visible fixed
Handing	Plates are not handed; levers may be reversed by removing the stop screw, except for handed levers and functions as shown in the ordering procedure
Standard Finishes	Satin Chrome Brushed (SC)
Non Standard Finishes	Chrome Plate (CP) Polished Brass (PB) Polyester Powdercoat (PC)*
Special Finishes	Architectural Bronze (AZ) Architectural Bronze Unlaqured (AU) Antique Copper (AC) Oil Rubbed Bronze (ORB) Polished Brass Unlaqured (BU) Satin Brass (SB)
Turn Functions	Turn functions feature a unique mechanism that automatically adjusts the length of the tail bar to suit a particular door thickness

4800 and 5800 Series



ASSA ABLOY

Functional, yet elegant, these rectangular or round ended brass plates complement a wide range of levers.

Application

Designed for use with Lockwood Selector and Synergy Series short and standard backset mortice locks.

Additionally there are functions that are designed to work with Lockwood 3580/3780 Series short backset mortice deadbolts.

Note: Certain lever designs are not compatible on short backset assemblies due to interference with the door stop.

4800 Series Square Brass Plate Furniture



5800 Series Round Brass Plate Furniture



PRODUCT SPECIFICATION	
Door Thickness	External plates are supplied with fixing screws to suit door thickness between 32 and 50mm. Extension kits are available for wider doors
Dimensions	185 x 26 x 11.5mm
Fixing	Plates are designed to fit back to back. If outside plate is specified with concealed fixing, then the inside plate must be visible fixed
Handing	Plates are not handed; levers may be reversed by removing the stop screw, except for handed levers and functions as shown in the ordering procedure
Standard Finishes	Satin Chrome Brushed (SC)
Non Standard Finishes	Chrome Plate (CP) Polished Brass (PB) Polyester Powdercoat (PC)*
Special Finishes	Aged Brass (AG) Architectural Bronze (AZ) Architectural Bronze Unlaqured (AU) Antique Copper (AC) Oil Rubbed Bronze (ORB) Polished Brass Unlaqured (BU) Satin Brass (SB) Satin Brass Unlacquered (SBU)
Turn Functions	Turn functions feature a unique mechanism that automatically adjusts the length of the tail bar to suit a particular door thickness

260 and 260SQ Series



ASSA ABLOY

The 260 Series Door Furniture has a 55mm round rose and the 260SQ Series Door Furniture has a 55mm x 2mm square rose. Concealed fixed plates have studs with internal threads located on the rose, visible roses have corresponding countersunk holes and are fixed back to back through the door.

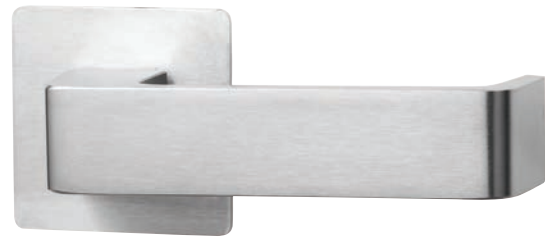
Application

Designed for use with Lockwood 3570 Series Mortice Latches and with A5250 Tubular Latches.

260 Series Door Handle



260SQ Series Door Handle



PRODUCT SPECIFICATION		
	260	260SQ
Dimensions	Lever Rose 55 x 3mm - aluminium 55 x 2mm - stainless steel and brass Escutcheon Rose 50 x 3mm - aluminium 50 x 2mm - stainless steel and brass	Lever Rose 55 x 2mm - stainless steel Escutcheon Rose 50 x 2mm - stainless steel
Materials	Aluminium, stainless steel or brass	Stainless steel only
Door Thickness	35 to 45mm standard. For doors 45 to 55mm thick, specify long fixing screws SP2000-208	
Finishes Standard	Natural Anodised Aluminium (NT) Stainless Steel (SS)	Stainless Steel (SS)
Finishes Non Standard	Polished Stainless Steel (PS) Powdercoat (PC) Marine Grade (MG) Polished Brass (PB)	Chrome Plate (CP) Polished Brass (PB) Polyester Powdercoat (PC)

Velocity® Door Furniture



ASSA ABLOY

The Velocity® series sets a new benchmark in easy installation and is ideal for both new and retrofit applications. The Velocity® series includes: passage sets for connecting doors, privacy sets for bathroom and toilet doors and dummy half sets for use on cupboard and wardrobe doors where a consistent styling is desired.

Standard Rose



SUMMIT® - L1



SPIRE® - L2



ELEMENT™ - L3



GLIDE™ - L4



HAKEA - 28



SALTBUSH - 34

Small Rose



SUMMIT® - L1



SPIRE® - L2



ELEMENT™ - L3



GLIDE™ - L4



HAKEA - 28



ACACIA® - 29A



SALTBUSH - 34



ACCESSION - L5



GIDGEE - 37



Standard Turn Snib - VSR7**



Emergency Indicating Turn - VSR8**



Disabled Accessible Turn Snib - VSR9**



Oval Cylinder Escutcheon - VSR6**



Square Rose Passage Trim - VSS1-TRIM**

The Lockwood Nero® Collection provides a sensuous quality that complements contemporary decor; adding a defining design element to any space.

The collection features a selection of popular Lockwood residential and semi-commercial products in an elegant matt black finish.



PULL HANDLE



VELOCITY® LARGE ROSE



VELOCITY® SMALL ROSE



CAVITY SLIDING



FLUSH PULL



724 SERIES DOOR CLOSER



NEXION® MECHANICAL



PARADIGM® 005



OUTLAND SLIDING DOOR TRACK

The 200 and 202 Artefact Series Door Furniture is 162mm square. Concealed fixed plates have studs with internal threads located in each corner, visible fixed plates have corresponding countersunk holes and are fixed back to back through the door.

Application

Designed for use with Lockwood Selector 3770 and Synergy 3570 Series Mortice Locks; latches and push/pull doors.

200 Series Square Corner Plate Furniture



202 Series Round Corner Plate Furniture



PRODUCT SPECIFICATION	
Dimensions	162 x 162 x 3mm - aluminium 162 x 162 x 2mm - stainless steel and brass
Door Thickness	35 to 45mm standard. For doors 45 to 55mm thick, specify long fixing screws SP2000-208
Finishes Standard	Natural Anodised Aluminium (NT) Satin Stainless Steel (SS)
Fixing	Plates are designed to fit back to back. If outside plate is specified with concealed fixing, then the inside plate must be visible fixed
Finishes Non Standard	316 Marine Grade (MG) Polished Brass (PB) Polished Stainless Steel (PS) Powdercoat (PC)*
Handling	All plates are handed with the exception of plain plates and pull handles
Materials	Aluminium, brass and stainless steel

Note: When using flush pulls back to back the minimum door thickness is 40mm.

The 212 and 224 Artefact Series Door Furniture is 162mm long x 50mm. Concealed fixed plates have studs with internal threads located top and bottom, visible fixed plates have corresponding countersunk holes and are fixed back to back through the door.

Application

Designed for use with Selector 3770 and Synergy 3570 Series Mortice Locks.

212 Series Oval Plate Furniture



224 Series Rectangular Plate Furniture



PRODUCT SPECIFICATION		
	212	224
Dimensions	162 x 50 x 3mm - aluminium 162 x 50 x 2mm - stainless steel and brass	162 x 50 x 2mm - stainless steel
Materials	Aluminium, stainless steel or brass	Stainless steel only
Door Thickness	35 to 45mm standard. For doors 45 to 55mm thick, specify long fixing screws SP2000-208.	35mm to 45mm as supplied. Maximum 65mm.
Finishes Standard	Natural Anodised Aluminium (NT) Stainless Steel (SS)	Stainless Steel (SS)
Finishes Non Standard	316 Marine Grade (MG) Polished Brass (PB) Polished Stainless Steel (PS) Powdercoat (PC)	

Note: When using flush pulls back to back the minimum door thickness is 40mm.

Key in Knob and Key in Lever



ASSA ABLOY

530 Series Key in Knob Locksets

The 530 series is designed as a non-handed, easy-to-install lockset. This high quality range is suitable for residential and semi-commercial applications including office partitioning.



530

930 & 950 Series Key in Lever Locksets

The Lockwood Key in Lever Locksets feature a choice of two levers - the 930 series and the 950 series. These locksets are produced from high purity zinc alloy and are available in a comprehensive range of functions.



930



950

PRODUCT SPECIFICATION		
	530	930 & 950
Backset	60mm standard backset. 70mm and 127mm latches available separately	70mm standard backset. 60mm and 127mm latches available separately
Door Thickness	32 to 48mm (all functions except 534 which suits doors 32 to 45mm).	32 to 45mm (all functions except 934 and 954 which suit doors 35 to 41mm).
Finishes	Satin Chrome Brushed (SC)	Satin Chrome Brushed (SC)
Handling	Non-handed lockset	Field adjustable handing
Latch	13mm projection brass bolt	13mm projection
Materials	High purity zinc alloy	High purity zinc alloy. A rose cover is supplied to conceal internal fixing screws

001 Double Cylinder Deadlatch

Features:

- Bolt hold-back function activated by external key or internal knob
- Can be key locked in hold-back position by key from inside
- Can be keyed alike to other Lockwood door locks
- Available in trade and display pack versions



002 Single Cylinder Deadlatch

Features:

- High security with cut resistant stainless steel bolt, 11 concealed anchorage points and door frame strengthener
- Bolt hold-back function activated by external key or internal knob
- Can be keyed alike to other Lockwood door locks



PRODUCT SPECIFICATION		
	001	002
Backset	60mm	60mm
Case	High purity zinc alloy	High purity zinc alloy
Cylinders	Internal and external 5 pin tumbler mechanism. Brass cylinders and brass barrels	External 5 pin tumbler mechanism. Brass cylinder and brass barrel
Door Thickness	30-45mm	30-45mm
Finish	Gold (GLD) Satin Chrome Pearl (SP) Chrome Plate (CP) Brown (BRN) Everbrass (EVB)	Gold (GLD) Satin Chrome Pearl (SP) Chrome Plate (CP) Brown (BRN)
Latch	Stainless steel 18mm projection	Stainless steel 18mm projection
Packers	3mm thick packer plates are available, these packers are installed under lock body to align lock body with face of jamb	3mm thick packer plates are available, these packers are installed under lock body to align lock body with face of jamb
Part number	L001-1K1, L001-1L1, L001-3K1, L001-3L1, L001-4K1, L001-4L1	L002-1K1, L002-1L1, L002-3K1, L002-3L1, L002-4K1, L002-4L1

Detention Series



ASSA ABLOY

A heavy duty plate designed for use in hospitals and detention facilities. Styled for institutional use, this plate has six fixing points to ensure that it is well secured to the door. Plates are designed to be free of ligature points.

Application

Designed for use with Lockwood Selector 3770 and Synergy 3570 Series Mortice Locks as well as Lockwood 3579 Secure Area Rated Locks.

This smaller plate range has been designed for use in detention facilities such as hospitals where domestic aesthetics are preferred over institutional type styling. Plates are designed to be free of ligature points.

Application

Designed for use with Lockwood Selector 3770 and Synergy 3570 Series Mortice Locks as well as Lockwood 3579 Secure Area Rated Locks.

Detention Series Square Plate Furniture



Detention Series Rectangular Plate Furniture



Lever and Knob Selection



STANDARD KNOB 21



WEBBED KNOB 22



LEVER 23

PRODUCT SPECIFICATION		
	Square	Rectangular
Dimensions	162mm x 180mm x 2mm: base plate 161mm x 75mm x 3mm: bevelled top plate	162mm x 76mm x 2mm: base plate 161mm x 75mm x 3mm: bevelled top plate
Door Thickness*	35mm minimum, 45mm maximum	35mm minimum, 45mm maximum
Finishes	Satin Stainless Steel (SS)	Satin Stainless Steel (SS)
Fixing	Six fixing points 220D series plates have concealed fixings 221D series plates have visible fixings	Four fixing points 222D series plates have concealed fixings 223D series plates have visible fixings
Handling	All plates are handed except 220D07, 220D24 and 220D31, which are non-handed when ordered without engraving	Only plates with 23 Lever and / or turnknobs are handed
Materials	Stainless steel	Stainless steel

*Note: A minimum door thickness of 50mm is required to fit flush pulls back to back.

Entrance Handles



ASSA ABLOY

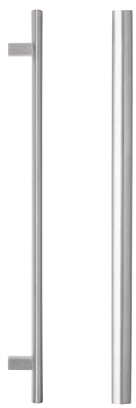
Lockwood Entrance Handles are constructed using the finest materials to incorporate the maximum standards in style, durability, finish and design.

Combining fit for purpose with the epitome of style, the Lockwood Entrance Handles range represents a comprehensive collection of high quality back to back handles.

Nine designs, ranging from classic to contemporary, have been selected to complement the evolving style requirements of both residential and commercial markets.

Application

Lockwood Entrance Handles are suitable for use on timber or aluminium frame as well as glass doors; making them the ideal choice for commercial, industrial and residential applications.



141



142



143



145



146



147



151



192



231

PRODUCT SPECIFICATION

Materials	Stainless Steel Construction: Constructed of 304 grade stainless steel, Lockwood Entrance Handles are suitable for use in external environments
Finishes	Satin Stainless Steel (SSS)

Push/Pull Plates



ASSA ABLOY

Application

Concealed fixed plates have studs with internal threads located in each corner, visible plates have corresponding countersunk holes and are fixed back to back through the door.

Designed for use with Lockwood 3570 Synergy Series and 3770 Selector Series Mortice Locks.

214/215 Series



216/217 Series



218/219 Series



PRODUCT SPECIFICATION			
	214/215	216/217	218/219
Dimensions	Length: 300mm Width: 100mm Thickness: 2mm Handle Diameter: 17.5mm Finger Clearance: 40mm	Length: 300mm Width: 65mm Thickness: 2mm Handle Diameter: 17.5mm Finger Clearance: 40mm	Length: 250mm Width: 50mm Thickness: 2mm Handle Diameter: 17.5mm Finger Clearance: 40mm
Materials	Stainless steel or brass	Stainless steel or brass	Stainless steel or brass
Door Thickness	35 to 45mm standard. For doors 45 to 55mm thick, specify long fixing screws SP2000-208		
Finishes	Satin Stainless Steel (SS) Polished Stainless Steel (PS) Powdercoat (PC) Polished Brass (PB)	Satin Stainless Steel (SS) Polished Stainless Steel (PS) Powdercoat (PC) Polished Brass (PB)	Satin Stainless Steel (SS) Polished Stainless Steel (PS) Powdercoat (PC) Polished Brass (PB)

Selector® 3772 Escape Locks

These locks have various latching functions which can be operated by key or handle outside and by turnknob, key or handle inside.



Selector® 3782 Short Backset Escape Locks

These locks have various latching functions operated generally by key or handle outside and by turnknob, key or handle inside. These locks comply with building regulations for single-action escape doors.



PRODUCT SPECIFICATION

	3772	3782
Backset	Available in 60, 89 and 127mm backsets	Available in 25.4, 30 and 38mm backsets
Furniture	Compatible with most Lockwood rose and plate furniture including Brass Door Furniture, Robert Watson Series, Artefact Series II, Ovation Series and VSR Series	Compatible with Lockwood 4800 and 5800 Series Furniture
Latch	Deadlatch only	Deadlatch only
Standard Finishes	Stainless Steel (SS) - Other finishes available via finish kit conversions	Stainless Steel (SS) - Other finishes available via finish kit conversions

3540 Short Backset Mortice Deadlock

Short backset, swing bolt deadlocks suitable for narrow stile hinged doors. Positive action deadbolt locked or unlocked by either key, turnknob, escape turn or lever handle. Suitable for sliding doors where lock can be mounted to door jamb and deadbolt engages strike mounted to face of door.



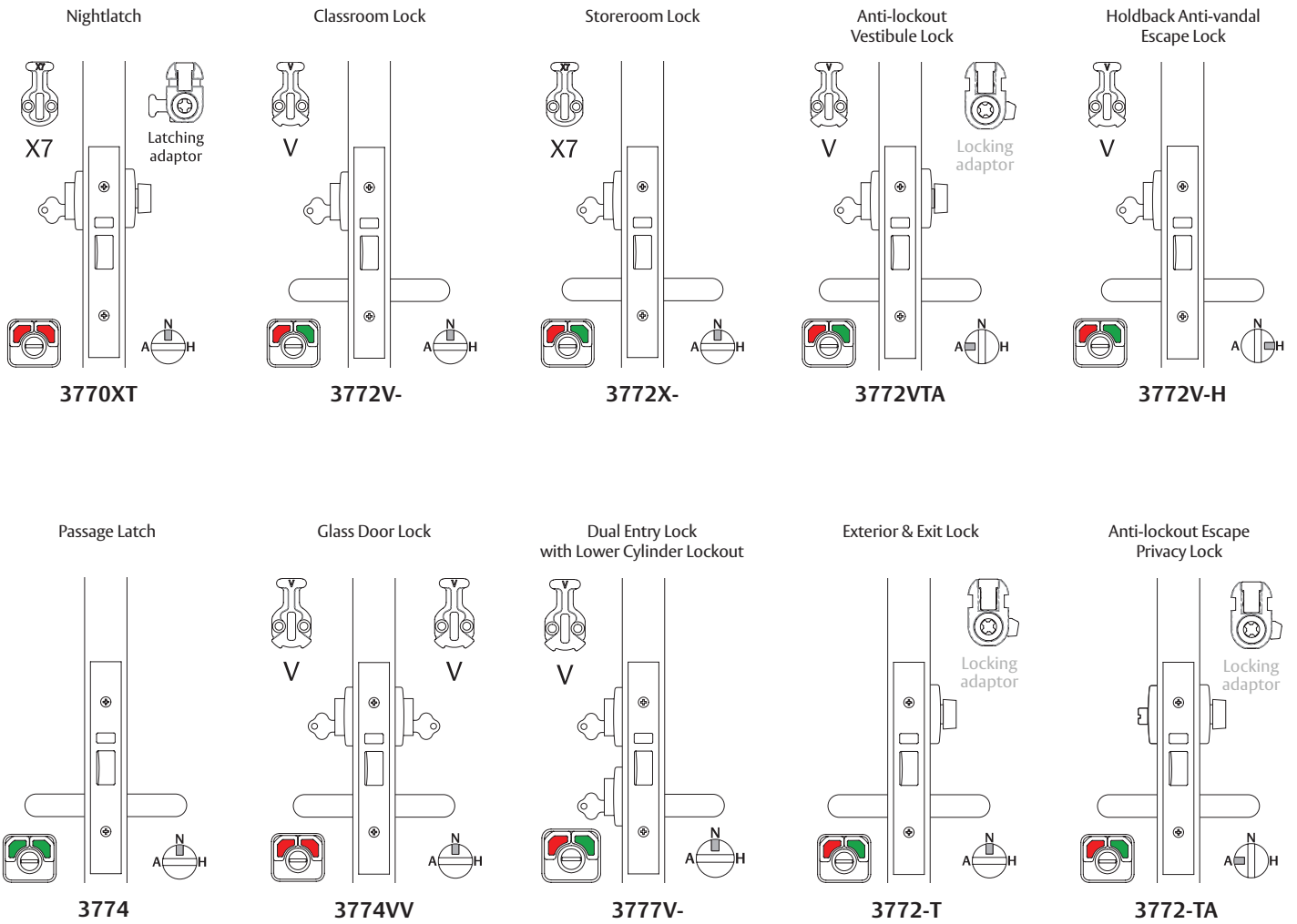
3541 Short Backset Mortice Hook Bolt

Short backset, swing-bolt deadlocks suitable for narrow stile sliding and swing doors. Positive action deadbolt is hooked to engage and lock into a latching or security strike when the bolt is in the thrown position. Deadbolt is locked or unlocked by either key, turnknob, escape turn or lever handle.



PRODUCT SPECIFICATION		
	3540	3541
Backset	23mm and 30mm	23mm and 30mm
Bolt	22mm projection sintered stainless steel	28mm projection sintered stainless steel. The bolt is hooked to suit sliding and swing applications and is chamfered for self latching
Door Thickness	Suits hollow stile door sections with 28mm internal thickness and 50mm maximum external thickness Timber Doors: 32 to 50mm	
Materials	High quality zinc alloy case	
Strikes		Latching strike for sliding doors and non latching security strike for swing doors to protect against jemmying

Specification Guide



Vestibule Door Lock:

Lockwood 3772-XT Vestibule lock
 Lockwood 1801/70SC
 Lockwood 1904/70SC
 DC7726DASIL Door Closer (Optional)

Privacy Lock:

Lockwood 3772-T Privacy Lock
 Lockwood 1814/70SC
 Lockwood 1939/70SC (L or R)
 DC7726DASIL Door Closer (Optional)

Passage Lock:

Lockwood 3774 Passage Lock
 Lockwood 1805/70SC
 Lockwood 1905/70SC
 DC7726DASIL Door Closer (optional)

Storeroom Lock:

Lockwood 3772X Storeroom Lock
 Lockwood 1801/70SC
 Lockwood 1905/70SC
 DC7726DASIL Door Closer (Optional)

(ALL FIRE RATED DOORS TO HAVE A DOOR CLOSER)

3570 Series Electric Mortice Lock

The lock can be operated by push buttons, intercom systems and key switches or integrated with electronic access control systems for use with higher security devices such as keypads or card readers.



3580 Series Electric Mortice Lock

The lock can be operated by push buttons, intercom systems and key switches or integrated with electronic access control systems for use with higher security devices such as keypads or card readers.

The 3580 Series is available in a wide variety of configurations to suit varying requirements and is especially suited to narrow style or short backset applications.



PRODUCT SPECIFICATION		
	3570	3580
Voltage	12Vdc - 24Vdc operating voltage	Available in 12Vdc - 24Vdc
Current	500mA (max) 80mA holding @ 12Vdc 275mA (max) 50mA holding @ 24Vdc	12Vdc ± 5% 250mA (max) 24Vdc ± 5% 125mA (max)
LED Current	When LEDs are fitted, add 15mA (max) to total current draw	When LEDs are fitted, add 15mA (max) to total current draw
Monitoring	Dual key override Deadlatched and door closed Request to exit Locked Microswitches: 500mA (max) @ 30Vdc each circuit Reedswitch: 100mA (max) @ 30Vdc	Key override Deadlatched and door closed Request to exit Hub/deadlatch/key override monitor: max ratings 500mA @ 30Vdc Door status monitor: max ratings 3W, 250mA (max) @ 12Vdc, 125mA (max) @ 24Vdc
Environment	Operational temperature range -20°C to +60°C	Operational temperature range -20°C to +60°C
Case/Cover	High purity zinc alloy construction	High purity zinc alloy construction
Backset	60mm standard, 89 and 127 mm available	23mm standard, 25.4, 30 and 38 mm extended available
Latch Bolts	Reversible with stainless steel construction	15mm stainless steel construction
Door Clearance	3 - 6.5 mm	3 - 6.5 mm
Door Thickness	Standard applications 32 to 50mm	Standard applications 32 to 50mm - Extension kits available
Cylinder	Standard Lockwood oval shaped cylinders	Standard Lockwood oval shaped cylinders
Cabling	1.6 metre length of cable with 12 pin socket supplied with each lock. Recommended cable: 18AWG (0.82mm ²) cable runs up to 30m	3.6 metre length of cable with 9 pin socket supplied with each lock. Recommended cabling: 18AWG (0.82mm ²) cable runs up to 30m
Furniture	Compatible with Lockwood series door furniture	Compatible with Lockwood series door furniture
Standard Finishes	Satin Chrome (SC) standard Bright Chrome (CP) Polished Brass (PB)	Satin Chrome (SC) standard Bright Chrome (CP) Polished Brass (PB)

A door can be kept closed using the holding force of a low-voltage magnet. ASSA ABLOY's line of electro magnets is suitable for high-traffic applications as well as for easy installation on glass doors.



A4 ELECTROMAGNETIC LOCK



A4 DOUBLE ELECTROMAGNETIC LOCK



A8 ELECTROMAGNETIC LOCK



A8 DOUBLE ELECTROMAGNETIC LOCK



A4 RECESSED ELECTROMAGNETIC LOCK



A8 RECESSED ELECTROMAGNETIC LOCK

PRODUCT SPECIFICATION

	Singles Series		Double Series		Recessed	
	A4 Magnet	A8 Magnet	A4 Magnet	A8 Magnet	A4 Magnet	A8 Magnet
Holding Force	250-280 Kg	550kg-580kg	500-560 Kg	1100kg-1160kg	500-560 Kg	1100kg-1160kg
Dimensions	(L)250 x (H)51.8 x (D)27.9mm	(L)265 x (H)71.8 x (D) 39 mm	(L)500 x (H)48.8 x (D)27.9mm	(L)530 x (H)71.8 x (D) 39 mm	(L)500 x (H)48.8 x (D)27.9mm	(L)530 x (H)71.8 x (D) 39 mm
Voltage	12Vdc/24Vdc +/- 10%	12Vdc/24Vdc +/- 10%	12Vdc/24Vdc +/- 10%	12Vdc/24Vdc +/- 10%	12Vdc/24Vdc +/- 10%	12Vdc/24Vdc +/- 10%
Current	520mA @ (12Vdc) 260mA @ (24Vdc)	420mA @ (12Vdc) 210mA @ (24Vdc)	520mA @ (12Vdc) 260mA @ (24Vdc)	840mA @ (12Vdc) 420mA @ (24Vdc)	520mA @ (12Vdc) 260mA @ (24Vdc)	840mA @ (12Vdc) 420mA @ (24Vdc)
Monitoring	Hall-Effect & Reed Switch		Hall-Effect (Optional)		Hall-Effect & Reed Switch	
Operating Temperature	-10 to 55 Degrees	-10 to 55 Degrees	-10 to 55 Degrees	-10 to 55 Degrees	-10 to 55 Degrees	-10 to 55 Degrees
Operating Humidity	0-90%	0-90%	0-90%	0-90%	0-90%	0-90%
Part Number	AAEMAGA4SSHSAL (Non Monitored) AAEMAGA4SSHRAL (Monitored)	AAEMAGA8SSHSAL (Non Monitored) AAEMAGA8SSHRAL (Monitored)	AAEMAGA4DSHSAL (Non Monitored) AAEMAGA4DSHRAL (Monitored)	AAEMAGA8DSHSAL (Non Monitored) AAEMAGA8DSHRAL (Monitored)	AAEMAGA4SRHSAL	AAEMAGA8SRHSAL

351 Motorised

ASSA ABLOY

The product is equipped with an electric motor and opens single action doors and swing doors. It is suitable for horizontal or vertical installation in the door frame or door leaf.

The door contact and the armature contact are designed as free switching contacts. The door contact is activated magnetically when the door is closed. The armature contact can be used to monitor the lock status.

The product is fail-safe and is suitable for escape doors. In the event of power loss or if the power fails, the bolt can be pushed back.

PRODUCT SPECIFICATION	
Input Operating Voltage	12VDC \pm 10%; 24VDC \pm 10%
Operating Current	880mA @ 12VDC; 520mA @ 24VDC
Holding Current	480mA @ 12VDC; 270mA @ 24VDC
Pre-Load	510kg
Holding Force	510kg
Handing	Universal
Installation	Vertical or Horizontal
Monitoring Contact	Yes
Fail Safe (Power-To-Lock)	Yes
Finish	Stainless Steel
Bolt Material	Steel
Bolt Length	10mm
Operating Temperature Range	-15 °C to +50 °C
Length	200mm
Width	25mm
Depth	42mm
Rebate Gap	3mm



Electric strikes are a common component within electromechanical door systems. They are characterised by speed, durability and longevity. ASSA ABLOY's line of electric strikes is suitable for a variety of applications.



ES100 SERIES



ES200 SERIES



ES300 SERIES



ES2000 SERIES



ES2600 SERIES



ES9000 SERIES

PRODUCT SPECIFICATION

	ES100	ES200	ES300	ES2000	ES2600	ES9000
Voltage	12Vdc and 24Vdc	12 or 24Vdc	12 or 24Vdc	12Vdc	12 or 24Vdc	10 – 30Vdc
Current	250 mA @ 12Vdc - 125mA @ 24Vdc	175 mA @ 12Vdc - 88 mA @ 24Vdc	175mA @ 12Vdc – 88mA @ 24Vdc	175 mA @ 12Vdc	175mA @ 12Vdc – 88mA @ 24Vdc	250mA @12Vdc – 130mA @24Vdc
Solenoid	Solenoids are rated for continuous use					
Monitoring	None			Solenoid Monitor - 1 amp NO/NC microswitch Door/Latch Monitor - 1 amp NO/NC microswitch		
Holding Force	680 kg Static Strength Rating	850kg Static Strength Rating	850kg Static Strength Rating	850kg Static Strength Rating	650kg Static Strength Rating	1300kg static strength rating
Latching		Suitable for 15mm latch bolt with 3mm door gap	Suit 18mm latch bolt with 3 mm door gap	Suitable for 15mm latch bolt with 3 mm door gap		Suitable for 15mm latch with 3mm door gap
Endurance	Cycle tested to 1,000,000 operations	Cycle tested to 1,000,000 operations	Cycle tested to 1,000,000 operations	Cycle tested to 1,000,000 operations	Cycle tested to 1,000,000 operations	1,200,000 cycles endurance rating @ 25kg pre-load 2,500,000 cycles general durability without pre-load conditions
Environment	Operational temperature range -20°C to +60°C Weather resistant construction. (IP56)	Operational temperature range -20°C to +60°C	Operational temperature range -20°C to +60°C	Operational temperature range -20°C to +60°C	Operational temperature range -20C to +60C	Operational temperature range -20C to +60C
Body	Cast Aluminium Construction					
Keeper	Stainless Steel					

2615 CAM Action Door Closer with Slide Arm

The Lockwood 2615 Series is a non-handed CAM Action Door Closer. Due to the CAM design this premium door closer is light to open but still strong enough to close a door.

The Lockwood 2615 Door Closer can be adjusted to meet the requirements of a light door opening resistance and is ideal for both interior and exterior doors. The Lockwood 2615 is light to open, but its adjustable closing force is high enough for heavy duty applications.

For disabled toilet applications where a breakout feature is required, the double action of the mechanism allows the door to be operated in the opposite direction for easy access into the room.

One model (2615) covers right hand and left hand applications, pull side/push side applications and also features an adjustable arm height.



2616 CAM Action Door Closer with Slide Arm

The Lockwood 2616 CAM Action Door Closer is a premium, high quality door closing device. When opening a door fitted with a Lockwood 2616 CAM Action Door Closer, the force required is less than that of a rack and pinion type door closer and continues to decrease through the opening arc.

This aesthetically appealing, narrow profile CAM Action Door Closer is suited for public and commercial applications where children, the elderly and the disabled are likely to be using the door.

The Lockwood 2616 is light to open, but its adjustable closing force is high enough for heavy duty applications.

One model (2616) covers right hand and left hand applications, pull side/push side applications and also features an adjustable arm height.



PRODUCT SPECIFICATION		
	2615	2616
Power	EN adjustable 1 to 5	EN adjustable 1 to 6
Back Check (BC)	Adjustable	
Hold Open	Adjustable. Hold-open can be set at any angle up to 120° of opening	
Handling	Non-handed. Suitable for left or right hand doors	
Cover	Formed metal cover	
Materials	Cast aluminium body manufactured from high-performance silicon alloy	
Mechanism	CAM action	
Mounting	Pull side, push side and over-door mounting	
Valves	Two pressure relief valves are a standard feature to protect against abuse	
Delayed Action	Adjustable	
Closing Speed	Adjustable	
Latching Speed	Adjustable	

7700 Series Door Closers



7714SRDA SERIES PREMIUM RANGE



7714DA SERIES PREMIUM RANGE



7726SRDA SERIES PREMIUM RANGE



7726DA SERIES PREMIUM RANGE

The Slide Arm Series permits smoother opening by way of reducing power as the door opens. Ideally suited for schools, hospitals or doors where children, disabled or the aged may enter.

Rack and pinion adjustable power door closer suitable for architectural and commercial applications.

PRODUCT SPECIFICATION

	DC7714SRDA	DC7726SRDA	DC7714DA	DC7726DA
Power	EN adjustable 1 to 3	EN adjustable 1 to 5	EN adjustable 1 to 4	EN adjustable 2 to 6
Back Check (BC)	Adjustable			
Hold Open	Adjustable. Hold-open can be set at any angle up to 130° of opening		Adjustable. Hold-open can be set at any angle up to 150° of opening	
Handling	Non-handed. Suitable for left or right hand doors			
Cover	Fully formed metal			
Materials	Extruded aluminium body manufactured from high-performance silicon alloy			
Mechanism	Rack and pinion design			
Mounting	Regular and over-door mounting			
Valves	Adjustable closing and latching speed valves with overload protection			
Delayed Action	Adjustable			

720 Series Door Closers



726SR SERIES



726 SERIES



724SR SERIES



724 SERIES

The Lockwood Rack & Pinion Slide Arm Series provides for a cleaner, more aesthetic appearance on the door whilst utilising the same robust features and benefits of Rack and Pinion functionality.

A range of adjustable power door closer units suitable for architectural and commercial applications.

PRODUCT SPECIFICATION

	726SR	724SR	726	724
Power	EN adjustable 2 to 6	EN adjustable 2 to 4	EN adjustable 2 to 6	EN adjustable 2 to 4
Back Check (BC)	Adjustable			
Hold Open	Adjustable. Hold-open can be set at any angle up to 130° of opening		Adjustable. Hold-open can be set at any angle up to 150° of opening	
Handling	Non-handed. Suitable for left or right hand doors			
Cover	Clip-on			
Materials	Extruded aluminium body manufactured from high-performance silicon alloy			
Mechanism	Rack and pinion design			
Mounting	Regular, parallel and over-door mounting			
Valves	Adjustable closing and latching speed valves with overload protection			

9800 Series Concealed Overhead Transom Door Closers

Lockwood 9800 Series Concealed Overhead Transom Door Closers provide a solution for applications where door control must be provided without disturbing the appearance of the door.

The closer fits into the transom above the door, most of the preparatory work is undertaken prior to installation, leaving minimal on site fitting.

Fully concealed door closers are designed to provide positive centring and door control on manually operated single or double action internal and external doors in schools, hospitals, clubs, factories, offices and commercial buildings.



PRODUCT SPECIFICATION	
Back Check (BC)	Built in back check from approximately 80°
Closing Angles	130° to 15°
Dimensions	Compact body size fits into 44.5mm x 100mm header section
Doors	Suitable for fire, metal, timber and glass doors
Door Thickness	Minimum 38mm
Door Weight	Maximum 115kg
Hold-open	Mechanical hold-open at 90° and 105°
Latching Angles	15° to 0°
Materials	Furniture body: high grade cast iron. Internal body: heat treated high alloy steel and ball bearings for optimum efficiency
Opening Angle	Maximum 130°
Pivot Point	70mm
Hydraulics	Stable hydraulic oil for a wide range of climatic conditions enabling constant operation
Valve	Built in pressure release valve protects closer from rough use

8800 Series

The Lockwood 8800 Series Floor Closers are designed to provide door control on manually operated double action doors in a wide range of commercial applications. The mounting kit provided with the Lockwood 8800 Series will suit glass, timber and aluminium frame door construction as standard.



PRODUCT SPECIFICATION	
Door Adjustment	The Lockwood 8800 is positionally adjustable for a height of 4mm, a width of 10mm and a length of 9mm
Door Control	Two independent adjustment valves provide full hydraulic control from 130° to 15° of closing and 15° to 0° of latching
Door Frame Type	Timber/aluminium/steel
Door Thickness	Minimum for timber 32 mm
Door Weight	Up to 120kg as standard
Door Width	Up to 1150mm (refer to selection procedure)
Finishes	Stainless Steel (SSS) Gold (GLD) Polished Stainless Steel (PSS) Other finishes on application
Hold-Open	Available in both non hold-open and hold-open versions. Mechanical hold-open 90° and 105° in separate units

ST8011SSS Floor Closer

The Lockwood ST8011SSS double action Floor Closer has been specifically designed to meet the exacting requirements of double or single action pivoted doors with a door leaf weight up to 300kgs. Innovative design enables onsite flexibility over a wide range of applications.



PRODUCT SPECIFICATION

Adjustable Closing-Speed	Adjustable Closing Speed: Closing 175deg - 15deg, Latching speed 15deg - 0deg
Back Check (BC)	The integrated mechanical back check function offers optimum protection for doors and walls. With these standard features built into one product this means there is only one model to specify and stock to cover a wide range of applications
Construction	Cast iron body Three thermodynamic valves for consistent performance Built in pressure relief valve Cement box hot zinc plated steel Universal cover plate
Delayed Action	Adjusting this valve controls the closing time of the door between 170deg - 85deg
Door Specifications	Suitable for door weights up to 300kgs Leaf widths from 950mm - 1400mm Max opening angle 175deg
Hold-Open	By setting the HO valve the door can be set to hold open the door at any angle from 85deg to 170deg opening, to release door manually pull door closed
Power Adjustment	Turning the screw valve the power can be adjusted from EN size 3-6; closing force ranges from 24Nm to 60Nm

Panic Exit Device



ASSA ABLOY

Fluid Series

The next generation in the Lockwood Panic Exit Device range, the FLUID Series provides a fundamental means of escape whilst offering a completely unique locking mechanism and design aesthetic.

With this type of unique innovation, ASSA ABLOY continues to evolve in standardising the market. The Lockwood FLUID Exit Device range combines ergonomics and performance with a completely new type of axis mechanism and high security bolt system.

Features:

- Brushed Stainless Steel Bolt
- High level of resistance. Up to 500kg to each latching point.
- Tested to 1,000,000 cycles
- Auxiliary bolt activation from 1mm
- Effortless opening < 20N required
- Available in both vertical and horizontal latching positions in 2/3 point configurations
- Bar can be cut down to 350mm
- New fixing bracket and template design reduces installation time by up to 50%

Protect. Evacuate people safely

Secure. High vandal resistance

Optimise. A simple and efficient installation process



HORIZONTAL LATCHING



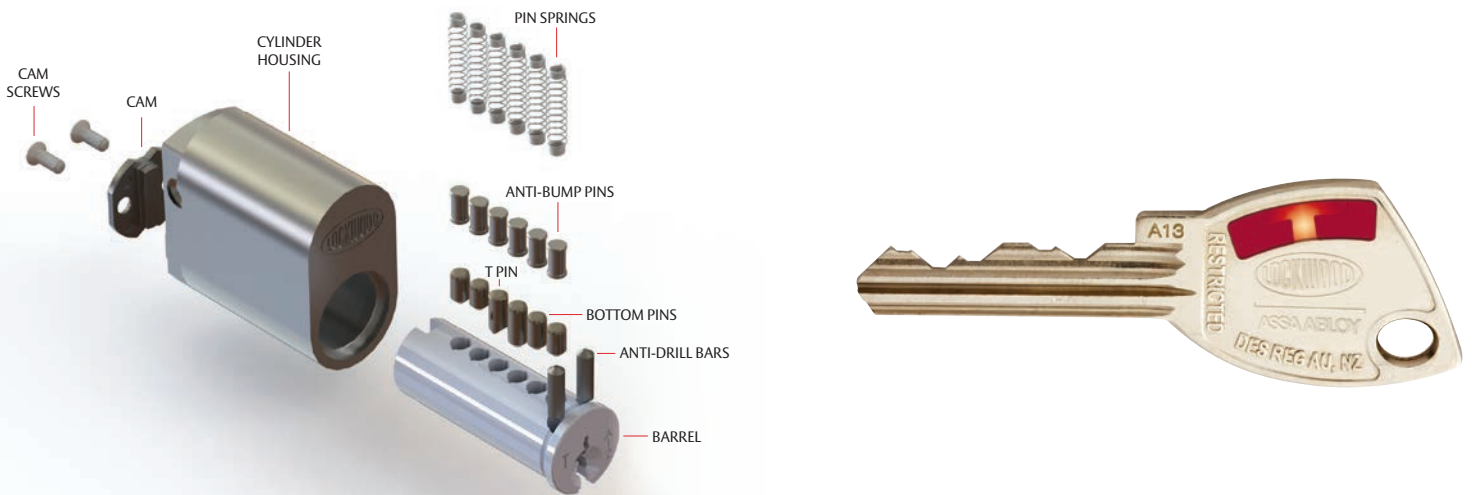
VERTICAL LATCHING

Gen 6T

Legal protection in the form of a patent on the T Pin - valid until 2026, which protects cut keys and cylinders.

Lockwood Gen 6T is suited to a wide range of application such as: office complexes, retail shops, factories, warehousing, motels, hospitality industry, sporting clubs, small businesses, apartment buildings and schools.

- Available in lengths 1-9
- A minimum of one T Pin must be used per cylinder, other chambers can use standard pins.
- New coloured plastic key inserts have been designed incorporating the T
- These distinguish between a GEN6T cut key and Generation Six cut key
- All barrels will come with T Pin slots in the chambers, this is to allow the use of the T Pins. Barrels are backward compatible with Generation Six



All ABLOY® locks are based on the unique operating principle of rotating detainer discs. Inside the ABLOY® cylinder, a series of discs rotate and function like those in a safe. Only the correct key, turned 90 degrees, will rotate the discs aligning the side bar gates. After the discs are aligned to the correct opening combination, the locking bar drops into the aligned slot allowing the lock to open. To withdraw the key it must be turned in the reverse direction until it stops. This will mechanically scramble the discs.

Abloy Protec2 Cliq

ABLOY® PROTEC2 CLIQ is a true one key solution where CLIQ keys are able to operate both the electromechanical and mechanical cylinders.

ABLOY® PROTEC2 CLIQ is a very cost effective solution. CLIQ cylinders are installed in areas which require electronic features such as audit trails, time limited access and easy blocking of lost keys. Those areas could for instance be the perimeters, storerooms or server rooms. Mechanical ABLOY® PROTEC2 cylinders are then installed in the other areas.



Abloy Protec2

ABLOY PROTEC2 is the latest milestone in the development of the unique ABLOY rotating disc cylinder keying systems.

In an ABLOY PROTEC2 locking system, different products can be keyed into the same master key system and thus all products can be operated with just a single key. This simplifies your locking system and key management. The range is wide, there are 197 billion different key combinations providing the possibility to create extensive master key systems that fulfil your exact specifications.



Abloy Novel

The unique ABLOY cylinder mechanism, based on the use of rotating discs instead of the traditional springs and pins, is known widely by security professionals all over the world.

In the ABLOY NOVEL locking system different products can be keyed into one master key system and thus all products can be operated with just a single key whether the application is a door, gate, drawer or cabinet.

The range is wide providing the possibility to create extensive master key systems that fulfil your exact specifications. ABLOY NOVEL is an excellent solution for new builds as well as when upgrading existing locking systems. With the ABLOY product range the core always remains the same.



Window Fasteners

Designed specifically in line with leading architectural innovations. The simple styling and unobtrusive lines of the range make both a competitive and attractive fastener option.

Nexus

A highly innovative range of high capacity aluminium stays, the Nexus stay range is designed to replace existing A stay ranges in the New Zealand market. The Nexus stay range can support window weights of up to 60kg and 2m in height, while still maintaining endurance performance and handle forces, making it the highest capacity aluminium residential window stay on the market.

Optimum Mortice Locks

The Optimum Mortice Lock is easy to install and has field selectable handing. There are different models available for sliding and hinged applications. The Optimum range of mortice locks is compatible with a range of levers on long plate furniture including Palladium and Palladium Xtra.

Endeavour

Combining the very popular Albany furniture styling with a concealed mortice style lockset, the Albany Endeavour Mortice lock offers the ultimate in residential sliding door hardware. The Albany Endeavour mortice range is simple to operate, requires a single action to lock or unlock, and can be supplied in a wide range of finishes and keying options. Suitable for use with aluminium, timber or uPVC horizontal sliding doors and windows.



WINDOW FASTENERS



NEXUS

OPTIMUM MORTICE LOCKS



ENDEAVOUR

Lockwood Flush Bolt (FB100, FB150, FB200)

The Lockwood range of flush bolts are manufactured from premium brass material and are designed for use in timber door applications to secure the inactive leaf of a set of double doors. Recessed into the edge of the door and completely concealed when the door is in the closed position. The flush bolt range is available in a variety of lengths to suit most applications.

Yale Flush Bolt (P3513, P3512)

The Yale flush bolt range is used for safe bolting of aluminium doors and windows. The 7mm diameter plated steel rod provides high security and is activated by a strongly constructed die-cast zinc body and operating lever with comfortable finger grip.

Flush Pulls (FP1-120, FP1-150, FP2-120, FP2-150)

Lockwood Stainless Steel Flush Pulls can be used on any door where a 'flush with the door face' pull is desired including sliding or cavity doors. The internal edges of the flush pull handles are finished for comfort of use and to soften aesthetics.

Toilet Indicator (L550, L811, L801)

Easy to install, surface mounted toilet bolts with an indicator to denote whether a room is occupied or vacant.

Hinges (LLW10075)

The 100 Series Architectural Hinges are designed to provide an effective solution to hanging doors where there is a need for high grade architectural quality hinges. Suitable for both interior and exterior applications.

Braille Signage (BRS1700, BRS1701, BRS1703, BRS1706)

Each plate consists of embossed tactile design, English text and braille lettering. The embossed components use standard imagery and fonts to ensure vision impaired non-braille readers can decipher the sign.

Door Stops (A250, A280, A350)

Lockwood offers door stops for wall and floor mounting with quality design, finish and appearance.



LOCKWOOD FLUSH BOLT



YALE FLUSH BOLT



FLUSH PULLS



TOILET INDICATOR



DOOR STOPS



HINGES



BRILLE SIGNAGE

ASSA ABLOY is the global leader in door opening solutions, dedicated to satisfying end-user needs for security, safety and convenience



Yale is one of the oldest international brands in the world and probably the best-known name in the locking industry. The Yale history captures major innovations that have marked the evolution not just of Yale, but of the entire locking industry.

With an unparalleled global reach and range of products, Yale reassures more people in more countries than any other consumer locking brand.



Lockwood is the leading brand in the Australasian locking industry. With a well-established reputation for high quality products, this iconic brand provides a wide range of locking solutions to residential housing, commercial building and industrial application markets.



Established in 1921, PC Henderson has long been acknowledged as a world leader in the design and manufacture of Sliding Gear Systems for domestic, commercial and industrial applications involving sliding and folding doors.



ASSA ABLOY is the global leader in door opening solutions, dedicated to satisfying end-user needs for security, safety and convenience.

ASSA ABLOY is represented in all major regions, in both mature and emerging markets, with leading positions in New Zealand, Australia, Europe and North America.

As the world's leading lock group, ASSA ABLOY offers a more complete product range of door opening solutions than any other company in the market.

ASSA ABLOY New Zealand Ltd
6 Armstrong Road
Albany, Auckland, 0632
New Zealand

nzsales@assaabloy.com
assaabloy.co.nz

