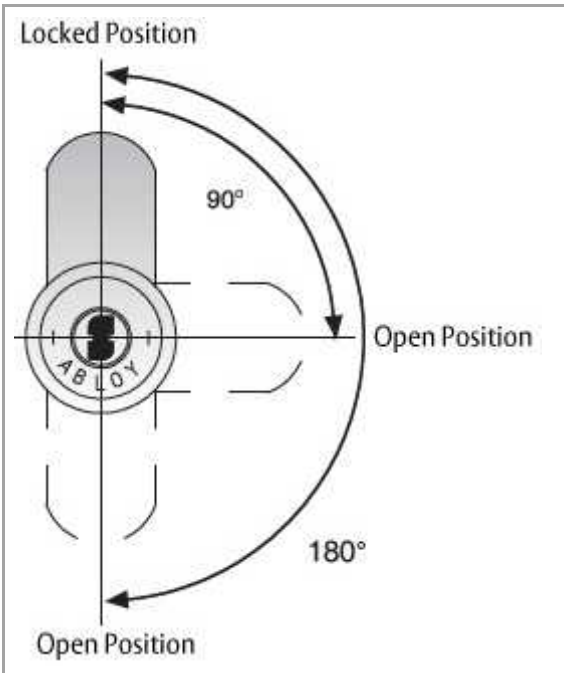
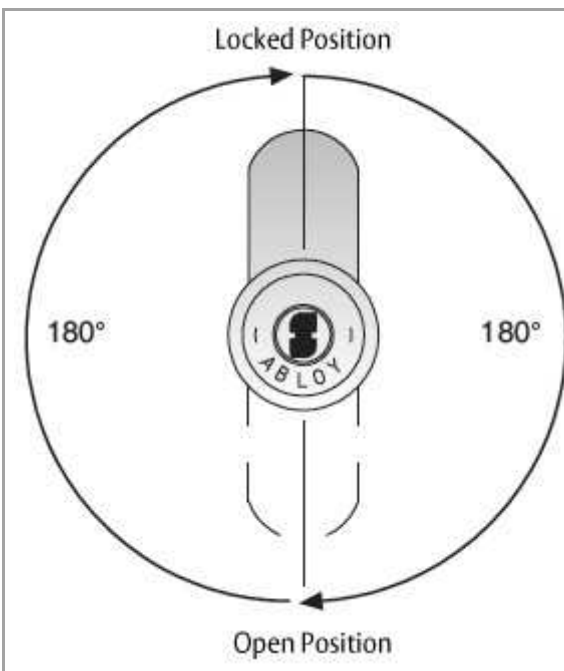


## ABLOY Cam Locks in Detail

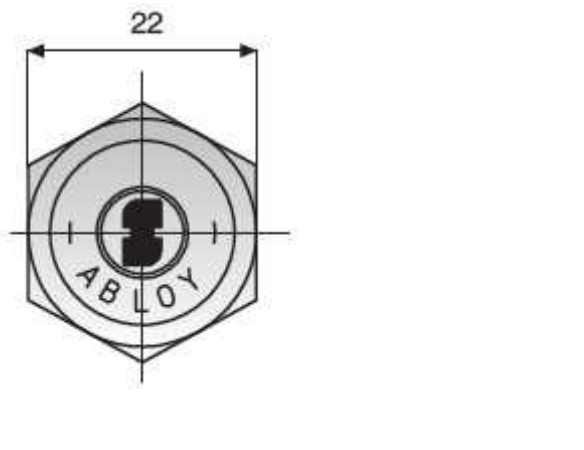
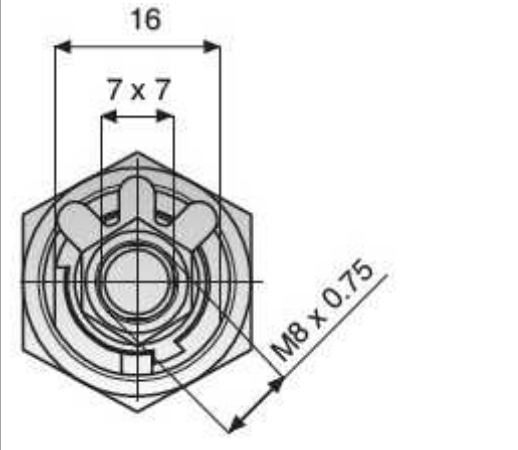
### Cam Turns

 <p>The diagram shows a cam lock cylinder with the brand name 'ABLOY' visible. A vertical line indicates the 'Locked Position' at the top. A curved arrow points 90 degrees clockwise to a horizontal line labeled 'Open Position' on the right. Another curved arrow points 180 degrees clockwise from the locked position to an 'Open Position' at the bottom. The cylinder has a keyhole and a small rectangular slot on the right side.</p>	<b>Lock Types</b> <ul style="list-style-type: none"><li>• CL100</li><li>• CL200</li><li>• CL103</li><li>• CL201</li><li>• CL104</li><li>• CL202</li><li>• CL105</li><li>• CL203</li><li>• CL108</li><li>• CL204</li><li>• CL109</li><li>• CL205</li><li>• CL110</li></ul>
---	---

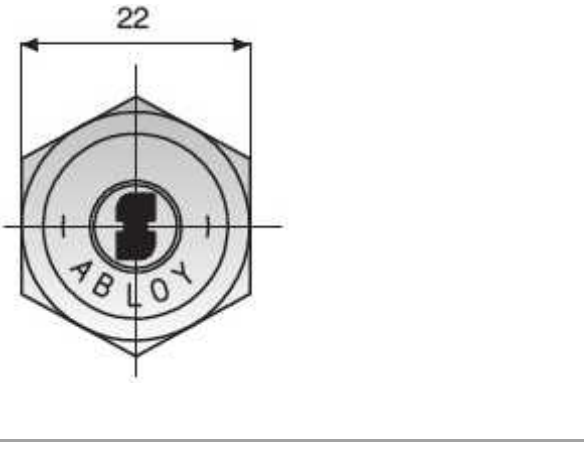
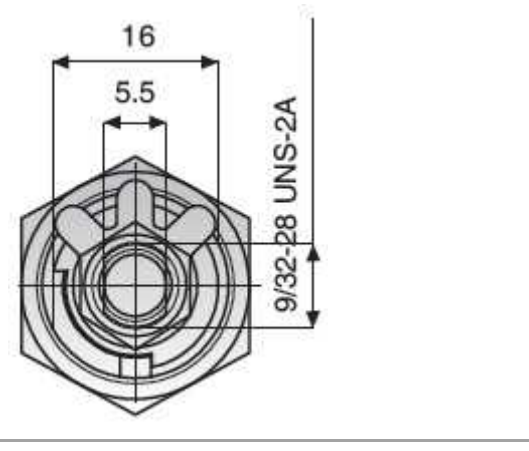
 <p>The diagram shows a cam lock cylinder with the brand name 'ABLOY' visible. A vertical line indicates the 'Locked Position' at the top. A curved arrow points 180 degrees clockwise to a horizontal line labeled 'Open Position' at the bottom. The cylinder has a keyhole and a small rectangular slot on the right side.</p>	<b>Lock Types</b> <ul style="list-style-type: none"><li>• CL101</li><li>• CL106</li><li>• CL107</li></ul>
--	---

Universal and US Specifications



Universal Specification

 <p>Technical drawing of the cylinder face of a valve. It shows a hexagonal head with a central circular opening. The opening has a diameter dimension of 22. The word 'ABLOY' is inscribed in a circular pattern around the central opening.</p>	 <p>Technical drawing of the cylinder end of a valve. It shows a hexagonal head with a central circular opening. The opening has a diameter dimension of 16. The word 'ABLOY' is inscribed in a circular pattern around the central opening. A dimension of 7 x 7 is shown for the central opening. A dimension of M8 x 0.75 is shown for the central opening.</p>
Cylinder Face	Cylinder End

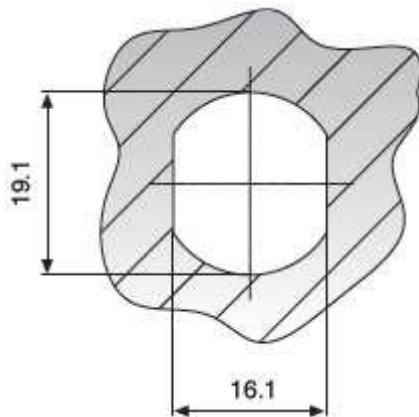
US Specification

 <p>Technical drawing of the cylinder face of a valve. It shows a hexagonal head with a central circular opening. The opening has a diameter dimension of 22. The word 'ABLOY' is inscribed in a circular pattern around the central opening.</p>	 <p>Technical drawing of the cylinder end of a valve. It shows a hexagonal head with a central circular opening. The opening has a diameter dimension of 16. The word 'ABLOY' is inscribed in a circular pattern around the central opening. A dimension of 5.5 is shown for the central opening. A dimension of 9/32-28 UNS-2A is shown for the central opening.</p>
Cylinder Face	Cylinder End

## Construction and Finish

	<p><b>Brass Cylinder</b> <i>Two vertical marks on cylinder face</i></p> <ul style="list-style-type: none"><li>• Detainer discs: Tin bronze</li><li>• Cylinder drum and end nut: Brass</li><li>• Cam, governor, nut lock washer and hex nut: Zinc-plated steel</li><li>• Cylinder housing: Chrome-plated brass</li></ul>
	<p><b>Steel cylinder</b> <i>Two horizontal marks on cylinder face</i></p> <ul style="list-style-type: none"><li>• Detainer discs: Tin bronze</li><li>• Cylinder drum and end nut: Brass</li><li>• Cam, governor, nut lock washer and hex nut: Zinc-plated steel</li><li>• Cylinder housing: Case-hardened, chrome-plated steel</li></ul>

#### Dimensions of Fitting Hole



When Ordering Please Specify:

- Lock type
- Cylinder type
- C = ABLOY® CLASSIC
- B = ABLOY® SENTRY
- N = ABLOY® PROTEC
- Number of keys in (to be ordered separately).  
In other cylinder types 2 keys/lock included.
- Key profile
- Cam type, if required
- Cam turn (90°, 180°)
- Fitting plate, if required