

# GEN6T Technical Reference Manual



We take the worry out of  
protecting what's valuable to you.  
Lockwood: *no worries*®



[lockweb.com.au](http://lockweb.com.au)



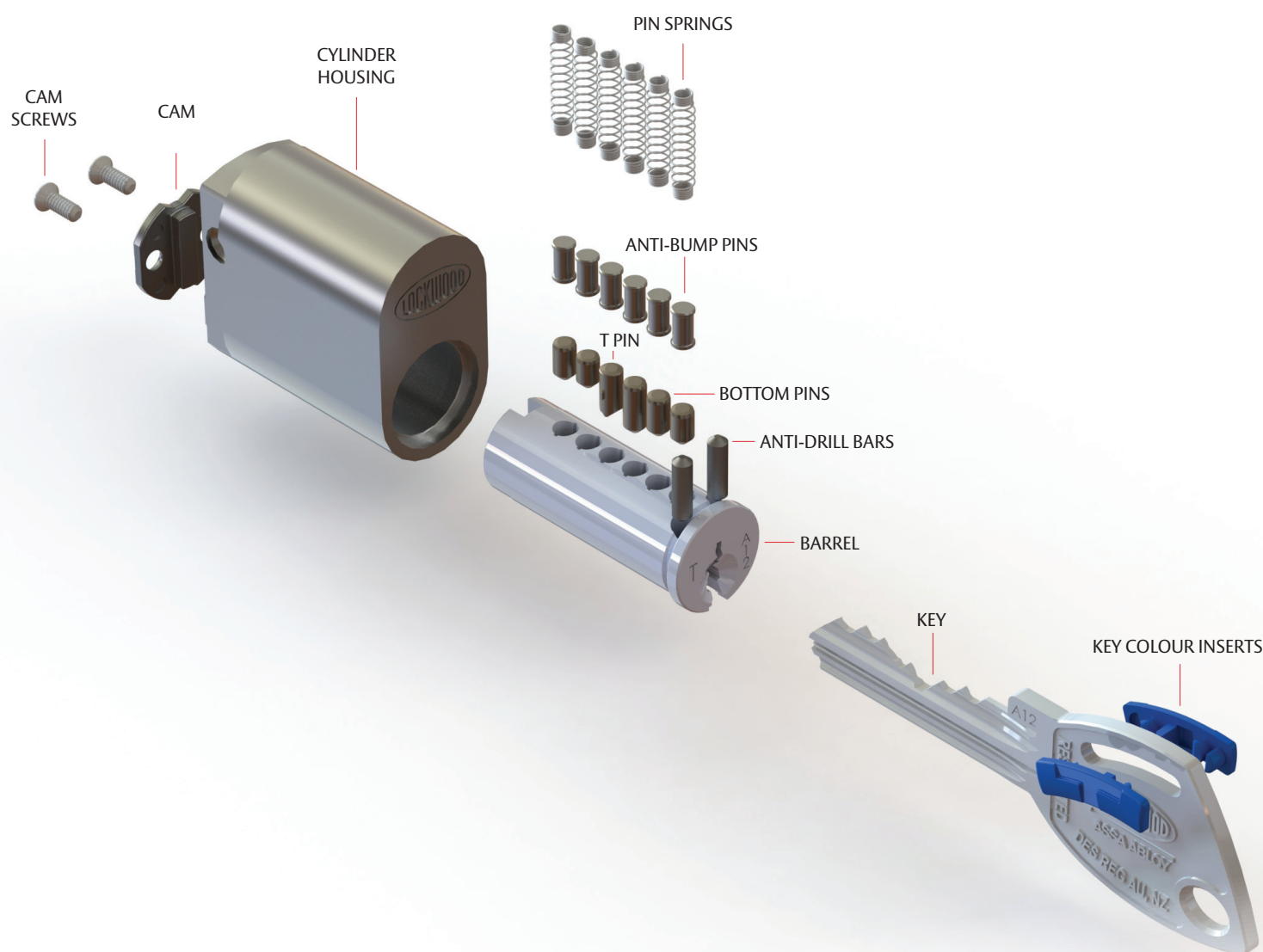
We take the worry out of  
protecting what's valuable to you.  
Lockwood: *no worries*<sup>®</sup>

# Contents

Terminology	3
Springs & Anti-drill Bar	4
Pins	5
Top Pin Usage	7
Key	8
Barrels	9
Ordering Table	13
Maintanance	14
Coding	15

# GEN6T Technical Reference Manual

## Terminology



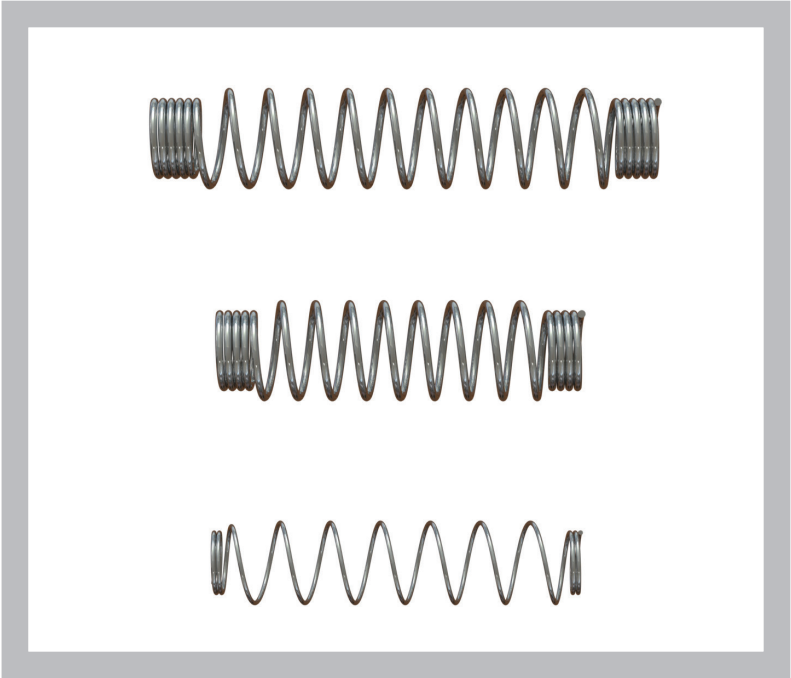
# GEN6T Technical Reference Manual

## Springs & Anti-drill Bar



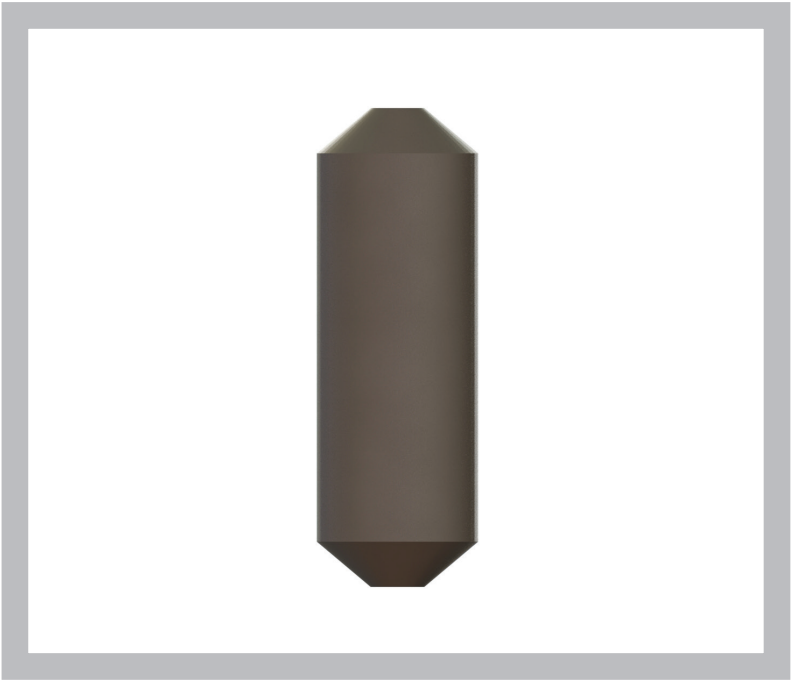
### Springs

Part Number	Description
SP201-336SS	Long Pin Spring
SP530-336SS	Short Pin Spring
CCT18067PCN	Hollow Top Pin Spring



### Anti-drill Bar

Part Number	Description
SP570-4227	Anti-drill Bar for Barrel



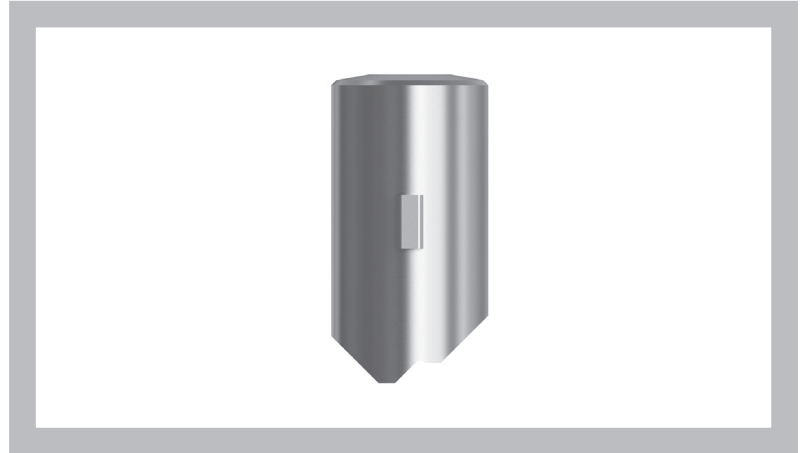
# GEN6T Technical Reference Manual

## Pins



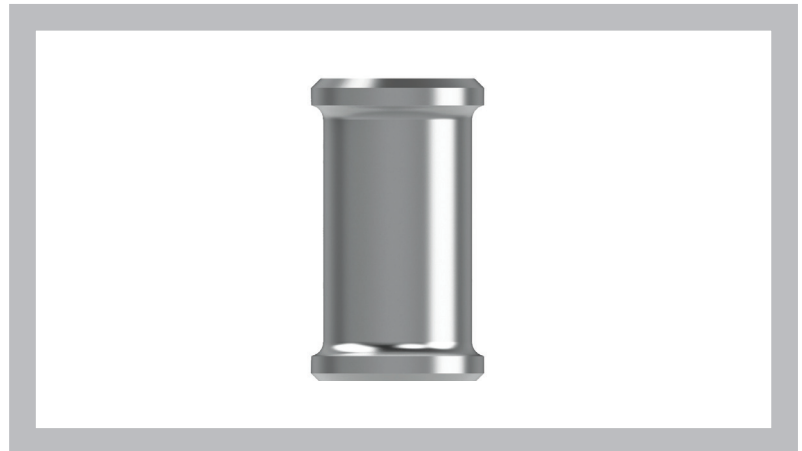
### T Pins

Part Number	Description
SP201-T21	T1 Pin
SP201-T22	T2 Pin
SP201-T23	T3 Pin
SP201-T24	T4 Pin
SP201-T25	T5 Pin
SP201-T26	T6 Pin
SP201-T27	T7 Pin
SP201-T28	T8 Pin
SP201-T29	T9 Pin



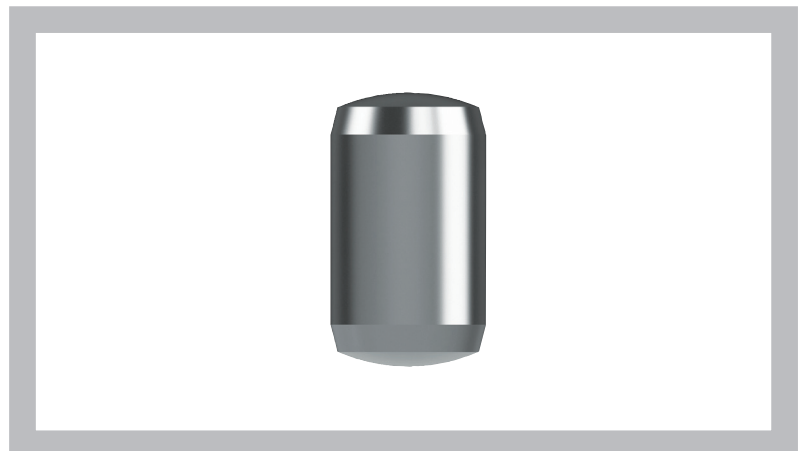
### Anti-bump Pins

Part Number	Description
SP570-113	Anti-bump (Standard)
SP530-332	Anti-bump (Medium)
SP530-333	Anti-bump (Short)



### Top Pins

Part Number	Description
SP201-7182	Top Pin (Standard)
SP530-232	Top Pin (Medium)
SP530-233	Top Pin (Short)



# GEN6T Technical Reference Manual

## Pins



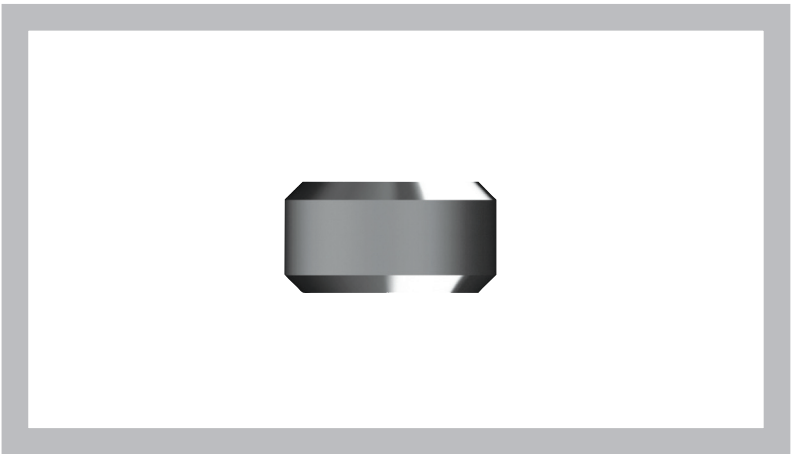
### Hollow Top Pins

Part Number	Description
CCT18351PCN	Hollow Top Pin 1
CCT18352PCN	Hollow Top Pin 2
CCT18353PCN	Hollow Top Pin 3
CCT18354PCN	Hollow Top Pin 4
CCT18355PCN	Hollow Top Pin 5
CCT18356PCN	Hollow Top Pin 6
CCT18357PCN	Hollow Top Pin 7
CCT18358PCN	Hollow Top Pin 8
CCT18359PCN	Hollow Top Pin 9



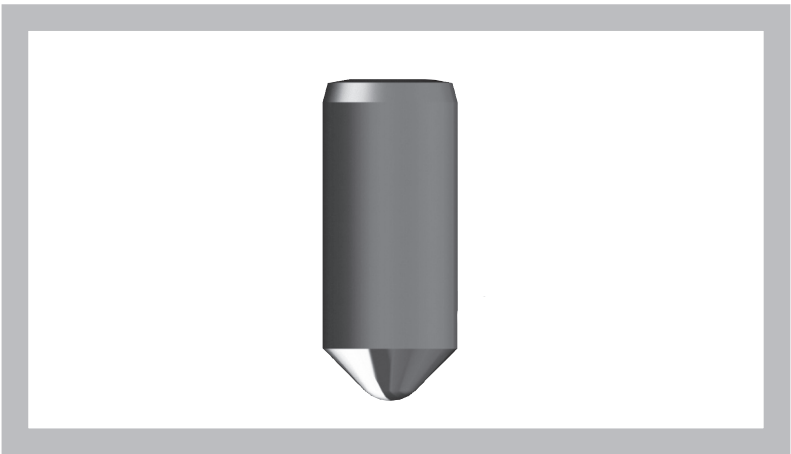
### Master Pins

Part Number	Description
SP201-42	Master Pin 2
SP201-43	Master Pin 3
SP201-44	Master Pin 4
SP201-45	Master Pin 5
SP201-46	Master Pin 6
SP201-47	Master Pin 7
SP201-48	Master Pin 8
SP201-49	Master Pin 9



### Bottom Pins

Part Number	Description
SP201-20	Bottom Pin 0
SP201-21	Bottom Pin 1
SP201-22	Bottom Pin 2
SP201-23	Bottom Pin 3
SP201-24	Bottom Pin 4
SP201-25	Bottom Pin 5
SP201-26	Bottom Pin 6
SP201-27	Bottom Pin 7
SP201-28	Bottom Pin 8
SP201-29	Bottom Pin 9



# GEN6T Technical Reference Manual

## Top Pin Usage



### General

ASSA ABLOY recommends using anti-bump pins for all chambers in all Lockwood branded products with the exception of 670 and LIW cylinders. All Lockwood branded products are tested with anti-bump pins.

### Standard Top Usage

Standard top pins are recommended for use with combined master pin and bottom pin length 0-9 in the cylinders listed below.

#### Cylinders:

- 201
- 255
- 334B
- 570
- 570E
- 577
- 3570
- 8217
- 8219
- 8466
- 9555
- 10000
- NEX (includes 005 & Onyx internal Cylinder)

### Non Standard Top Pin Usage

#### Cylinders:

- 001 (includes 680)
- 355
- 530
- 691
- 8221
- 8474

For the above cylinder list use the following top pin lengths:

Combined master and bottom pin length 0-2 = Standard Top Pin

Combined master and bottom pin length 3-6 = Medium Top Pin

Combined master and bottom pin length 7-9 = Short Top Pin

Note: SP530-336SS Short Top Pin Spring must be used with 001, 355, 530, 691, 8221 & 8474 cylinders.

#### Cylinders:

- 670
- LIW

For the above cylinder list use the following top pin lengths:

Combined master and bottom pin length 0-1 = Hollow Top Pin No.8

Combined master and bottom pin length 2-3 = Hollow Top Pin No.7

Combined master and bottom pin length 4 = Hollow Top Pin No.6

Combined master and bottom pin length 5-6 = Hollow Top Pin No.5

Combined master and bottom pin length 7 = Hollow Top Pin No.4

Combined master and bottom pin length 8-9 = Hollow Top Pin No.3

Note: CCT18067PCN Hollow Top Pin Spring must be used with 670 and LIW cylinders.



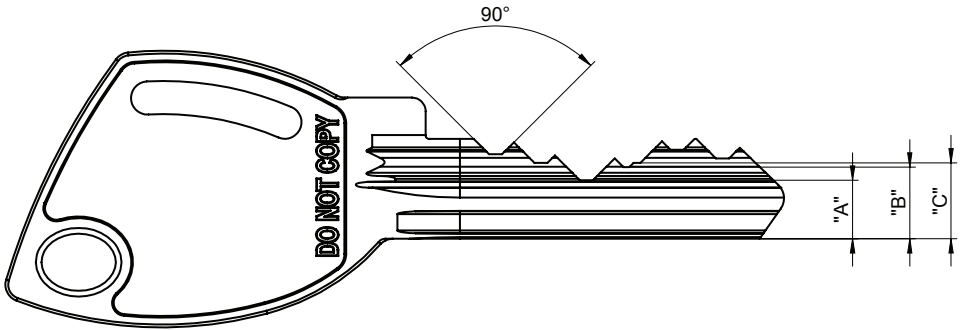
# GEN6T Technical Reference Manual

## Key



### Key Cutting Machines

ASSA ABLOY recommend that all Lockwood GEN6T Keys are cut to code rather than on duplicating machines.



### Height of key bit after cutting

Standard Cut (S) #	0	1	2	3	4	5	6	7	8	9
T Cut (H or T) #	-	T1	T2	T3	T4	T5	T6	T7	T8	T9
"A"	8.54	8.16	7.78	7.40	7.02	6.64	6.26	5.88	5.50	5.12
"B"	-	8.16	7.78	7.40	7.02	6.64	6.26	5.88	5.50	5.12
"C"	-	8.54	8.16	7.78	7.40	7.02	6.64	6.26	5.88	5.50

**NOTE:** Standard cut depths from #0 to #9  
T-pin cut depths from #1 to #9

### Key Inserts

GEN6T Key inserts come in 12 colours to choose from.

Colour Swatch*	Colour Name	GEN6T Part Number	Generation Six Part Number
	White	CCG6TWHITE	CCG6WHITE
	Grey	CCG6TGREY	CCG6GREY
	Black	CCG6TBLACK	CCG6BLACK
	Blue	CCG6TBBLUE	CCG6BLUE
	Light Blue	CCG6TLTBLUE	CCG6LTBLUE
	Green	CCG6TGREEN	CCG6GREEN
	Dark Green	CCG6TDKGREEN	CCG6DKGREEN
	Yellow	CCG6TYELLOW	CCG6YELLOW
	Orange	CCG6TORANGE	CCG6ORANGE
	Red	CCG6TRED	CCG6RED
	Violet	CCG6TVIOLET	CCG6VIOLET
	Pink	CCG6TPINK	CCG6PINK

# GEN6T Technical Reference Manual

## Barrels



To create your Barrel replace ### with the desired profile.

### 001

Part Number: BG6001###SC

For use with:

- 001 Deadlatch internal Cylinder
- Nexion Cylinders
- Onyx internal Cylinder
- 680 Cylinder
- 900 Macquarie internal Cylinder
- W75 Whitco Deadlatch internal Cylinder

Note:

- 001 with Safety Release & 001 with Safety Release & Lock Alert.
- 680 rounded body with oval screw hole plug cover.



### 002

Part Number: BG6201###SC

For use with:

- 001 & 002 Deadlatch external Cylinder
- 100 & 201 Nightlatch external Cylinder
- 355 & 303 external Cylinder
- 200 & 211 Stream Latch external Cylinder
- 213 Stream Lock Deadbolt external Cylinder
- 507 Nightlatch external Cylinder
- 900 Macquarie external Cylinder

Note:

- Lockwood rim locks come standard with 5 pin rim Cylinder. A new 6 pin Cylinders housing will be required to use this barrel.



### 530

Part Number: BG6530###SC

For use with:

- 530 Cylinder for 530/930/950 Series Locksets
- 234 Padlocks (early removable core model ~Year 2000)
- Durabolt



# GEN6T Technical Reference Manual

## Barrels



To create your Barrel replace ### with the desired profile.

### 570

Part Number: BG6570###SC

For use with:

- Selector Series Mortice Lock
- Synergy Series Mortice Lock
- Pentagon Series Mortice Lock
- 007 & 008 Deadbolt Cylinders
- 334 Padlock
- 355 internal Cylinder
- 500 Series Lockset Cylinders
- 570E Modular Base Cylinder
- 590 Short back set Mortice Lock
- 693 Cupboard lock (691 Cylinder)
- 777 Deadbolt Cylinders
- 3540 Series Mortice Lock
- 8217-5 Astra oval Cylinder
- 8217-6 Astra round Cylinder
- 8217-7 Astra flat sided Cylinder
- 10000 Digital key override Cylinder
- Airlock Cylinder
- LIW Lock-it-Well Cylinder
- Cortex (Mortice Lock version)



### 670

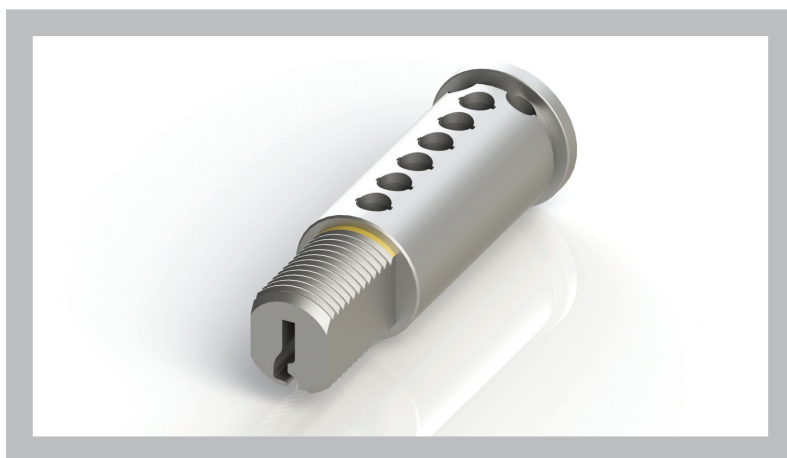
Part Number: BG6670###SC

For use with:

- 670 Cam Lock

Note:

- Requires use of hollow top pins & hollow top pin springs.



### 3570

Part Number: BG63570###SC

For use with:

- Synergy Series Mortice Lock Hold Back Cylinder

Note:

- Must be used with 3570 Cylinder housing.
- Cam screw pitching is different to a standard 570 barrel. Only the two piece hold back cam assembly is suitable for this barrel.



# GEN6T Technical Reference Manual

## Barrels



To create your Barrel replace ### with the desired profile.

### 7115

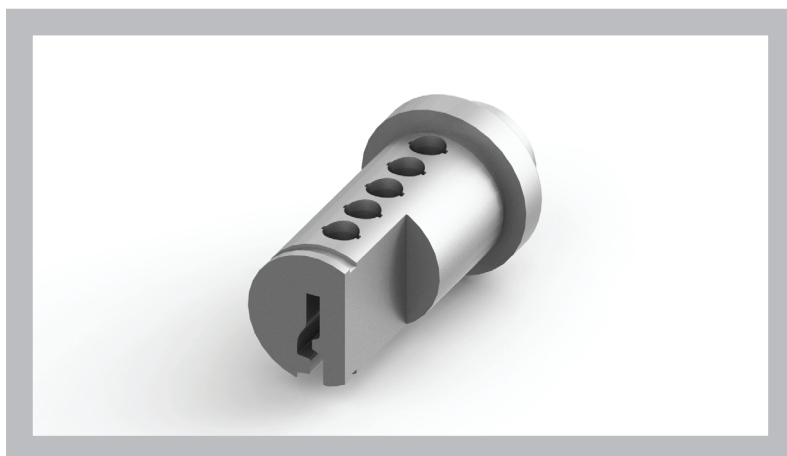
Part Number: BG67115###SC

For use with:

- Symmetry Cavity Slider Cylinder
- Whitco Blaxland Cylinders

Note:

- This barrel is used with the standard 5 pin. Cylinder housing and the first chamber is not used. Only chambers 2-6 can be used.

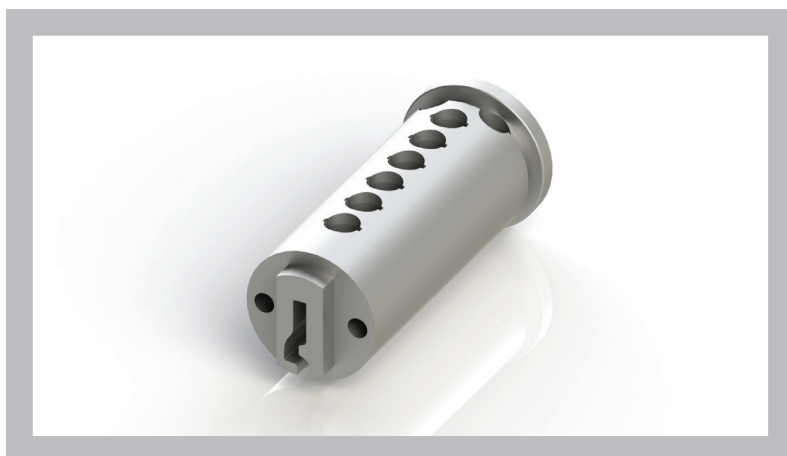


### 8218

Part Number: BG68218###SC

For use with:

- 8218 Metal Craft threaded Cylinder
- 8219 Yale threaded Cylinder
- 8466 Kawneer threaded Cylinder



### 8221

Part Number: BG68221###SC

For use with:

- "PD" type Cylinders
- Onyx external Cylinder
- Symmetry 7105 & 7108 Deadbolt Cylinders
- Yale YK16 Series Knob Sets
- Yale YL17 Series Lever Sets
- Yale YDB1 Deadbolt Cylinders

Note:

- When keying the Onyx to 6 pin, a new 6 pin housing is required



# GEN6T Technical Reference Manual

## Barrels



To create your Barrel replace ### with the desired profile.

### 8474

Part Number: BG68474###CP

For use with:

- 8474 Garage L Handle Lock



### 9555-1

Part Number: BG695551###CP

For use with:

- 9555 Euro double cylinder fixed cam



### 9555-2

Part Number: BG695552###CP

For use with:

- 9555 Euro cylinder and turn fixed cam



### 9555-3

Part Number: BG695553###CP

For use with:

- 9555 Euro double cylinder lazy cam
- 9555 Euro cylinder and turn lazy cam
- 9555 Euro single cylinder fixed cam
- 9555 Euro single cylinder lazy cam



# GEN6T Technical Reference Manual

## Ordering Table



To create your Barrel replace ### with the desired profile.

### Cylinder & Barrel Table

Cylinder	Description	Barrel
001G6NEIMSC	001 Deadlatch internal Cylinder	BG6001###SC
005G6NEIMSC	005 Paradigm Cylinder	BG6001###SC
201G6NREMSC	201 Rim Lock Cylinder	BG6201###SC
334BG6NEEMSC	334 Padlock Cylinder	BG6570###SC
355G6NEIMSC	355 Internal Cylinder	BG6570###SC
530G6NEEMSC	530 Cylinder	BG6530###SC
570G6*OEMSC	570 Australian Oval Cylinder	BG6570###SC
570EG6/*SC	570 Modular Base Cylinder	BG6570###SC
577G6NOEMSC	577 Dual Access Lower Cylinder	BG6570###SC
680G6NEEMSC	680 Patio Bolt Cylinder	BG6001###SC
691G6NREMSC	691 / 693 Cupboard Lock Cylinder	BG6570###SC
3540G6NOEMSC	3540 Series Mortice Lock Cylinder	BG6570###SC
3570G6\$OSMSC	3500 Series Hold Back Cylinder	BG63570###SC
8219G6PTEMSC	Panic Exit Device Cylinder	BG68218###SC
8221G6NEEMSC	8221 "PD" Cylinder	BG68221###SC
8466G6KREMSC	8466 Kawneer Cylinder	BG68218###SC
8474G6NEEMCP	8474 Garage L Handle	BG68474###SC
9555-1G6NSDMCP	Euro double Cylinder fixed cam	BG695551###CP
9555-2G6NSTMCP	Euro Cylinder & turn fixed cam	BG695552###CP
9555-3G6NSDMCP	Double Cylinder lazy cam	BG695553###CP
9555-4G6\$STMCP	Euro Cylinder & turn lazy cam	BG695553###CP
9555-5G6NSEMCP	Euro single Cylinder fixed cam	BG695553###CP
LIWG6NREMSC	Lock-it-Well Cylinder	BG6570###SC
NEXG6NEIMSC	Nexion internal Cylinder	BG6001###SC
NEXG6NEEMSC	Nexion external Cylinder	BG6001###SC

**NOTE:** Replace \* with desired cam or other cylinder variation  
Replace \$ with "L" for left hand or "R" for right hand.

# GEN6T Technical Reference Manual

## Maintenance



### Lubrication

ASSA ABLOY recommends using Inox MX3 lubricant.

- Spray the lubricant down the barrel keyway after assembly while holding the cylinder upside down.
- Operate the cylinder three times to spread the lubricant and wipe the cylinder clean of excess lubricant.

*Never paint over cylinders.*

# GEN6T Technical Reference Manual

## Coding

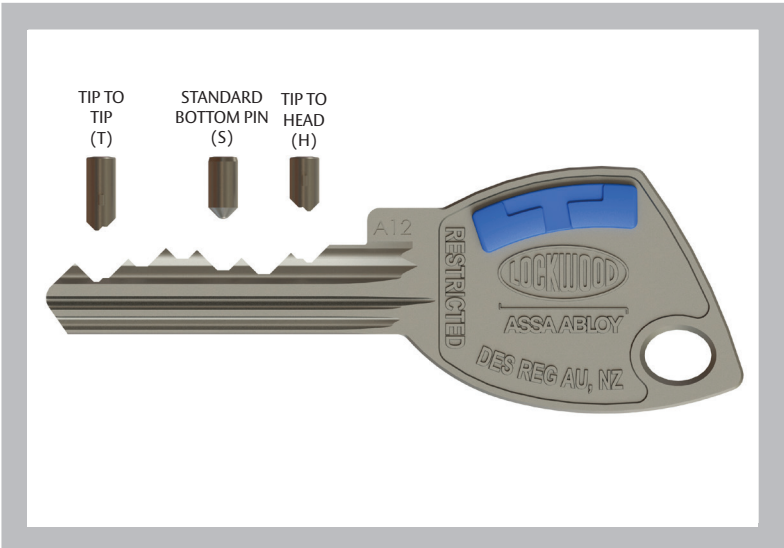


### Coding

A ProMaster module has been developed with WH Software to assist with coding GEN6T Key Systems. The module incorporates the rules in this section and allows for flexibility around other recommendations.

### Guidelines

- GEN6T uses both Lockwood Inline Pins 0-9 and Lockwood T Pins 1-9.
- Use of a pin deeper than 7 in the first chamber is not recommended.
- T Pins can be used in chamber positions 1-6.
- T Pins can be used in either direction, ASSA ABLOY recommends H.
- T Pin direction is specified as indicated in the diagram below, either H or T.



### Rules

- A minimum of one T Pin must be used in any GEN6T cylinder.
- MAC's rule between standard cuts is 7.
- MAC's rules for T Pin cuts are calculated as described in the diagrams and table to the right.

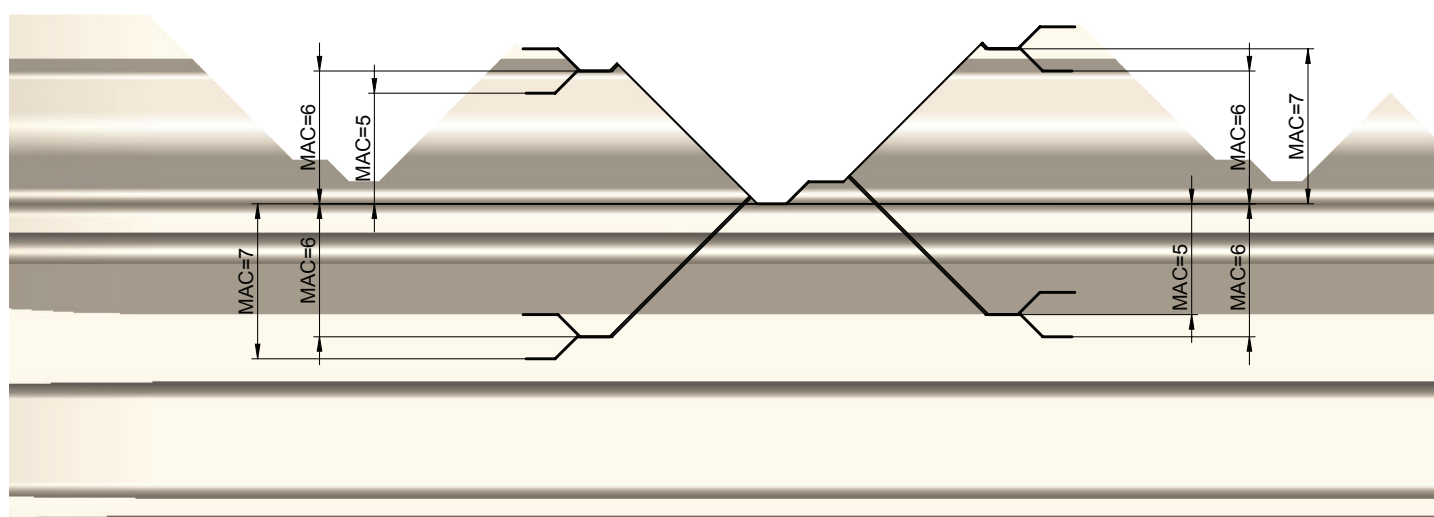
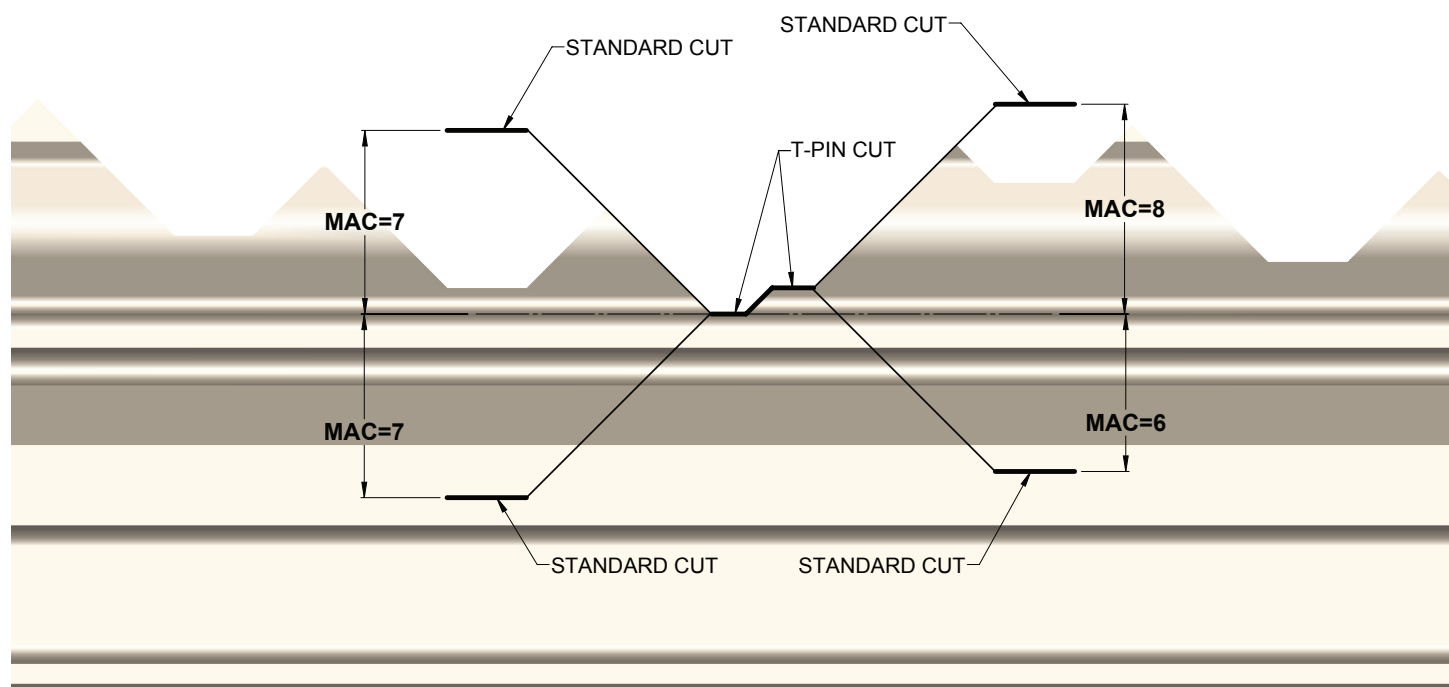
From	Direction	To	MAC's
Standard Cut	Down to	Low High	7
Standard Cut	Up to	Low High	7
Standard Cut	Down to	High Low	8
Standard Cut	Up to	High Low	6
High Low	Down to	Low High	6
Low High	Down to	Low High	5
High Low	Up to	Low High	6
Low High	Up to	Low High	7
High Low	Down to	High Low	7
Low High	Down to	High Low	6
High Low	Up to	High Low	5
Low High	Up to	High Low	6

**NOTE:** Standard cut depths from #0 to #9  
T-pin cut depths from #1 to #9



# GEN6T Technical Reference Manual

## Coding





When it comes to safety it's primal, it's our survival, a basic human need. We want freedom to live, explore and rest without fear. To leave behind in safety our precious, cherished and most valuable things. And to come back to them exactly as we left them.

For as long as we have valuables, we will always need protection. Though the need for our products is driven by concerns, the Belief in our Brand is propelled by confidence. An unquestioned confidence in our ability to protect what is most important to you.

Our products provide peace of mind through strength, substance and style. Our reputation is forged in traditions, supreme workmanship, uncompromised values and above all our people. We are a trusted, tireless and vigilant guardian that protects families, households, trades and businesses.

Because if feeling safe is a basic human need, knowing you're safe is why Lockwood exists. For over 75 years, our guiding principle is and will always be: To take the worry out of protecting what is valuable to you.

**Lockwood:** *no worries*<sup>®</sup>



Lockwood is the leading brand in the Australasian locking industry. With an established reputation for high quality products, this iconic brand provides a wide range of locking solutions to residential housing, commercial building and industrial application markets. Lockwood is supported by an extensive distribution and after-sales support network. Our customers include retailers, architects, trade and industrial personnel, locksmiths and security dealers.

ASSA ABLOY is the global leader in door opening solutions, dedicated to satisfying end-user needs for security, safety and convenience.

ASSA ABLOY is represented in all major regions, in both mature and emerging markets, with leading positions in Australia, Europe and North America.



The Lockwood 25 Year Mechanical Warranty

For warranty terms and conditions, please visit [www.assaabloy.co.nz/warranties](http://www.assaabloy.co.nz/warranties)

**ASSA ABLOY New Zealand Ltd**  
6 Armstrong Road  
Albany, Auckland, 0632  
New Zealand

[nzsales@assaabloy.com](mailto:nzsales@assaabloy.com)  
Telephone +64 9 448 9188  
[assaabloy.co.nz](http://assaabloy.co.nz)

## Disclaimer

Whilst every effort has been made to ensure that the information contained in this manual is accurate at the time of publication, ASSA ABLOY recommends that you consult ASSA ABLOY or its agents prior to placing an order to ascertain current information on specific products, as ASSA ABLOY reserves the right to make changes without notice. ASSA ABLOY will not be liable for any injury, loss or damage whatsoever, arising from any errors or omissions in the information contained in the manual or arising from the use or application of the information contained herein.

